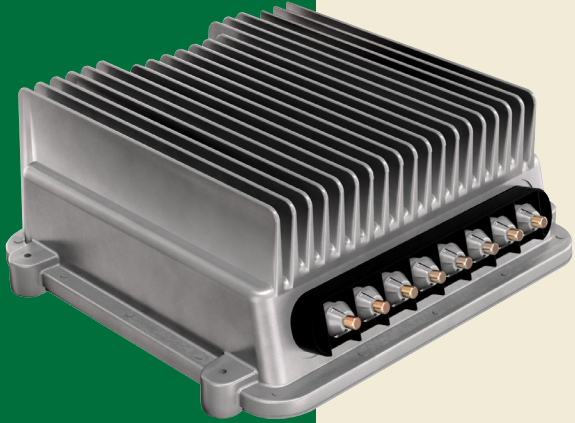


# SMARTTEC®

*Work Function System*



*FORWARD MOTION THROUGH FORWARD THINKING®*



**SMARTTEC®**  
*by* **HYDRO-GEAR**

# SMARTTEC<sup>®</sup>

## Work Function System

Total electric system solution

Advanced safety features

Torque limiting to protect system

Integrated self diagnostics

Regenerative braking

No brushes for extended motor life

Voltage compensation limits speed droop

Zero maintenance

No belts or pulleys

Environmentally friendly

Convenient

Speed control

Computer controlled system

Current limiting protection

### SPECIFICATIONS

<b>Work Function System</b>		
Controllers	<i>quantity</i>	1
Motors	<i>quantity</i>	2
<b>Motor Package Size</b>		
Height (Total)	<i>in [mm]</i>	6.33 [160.78]
Height (Above mount surface)	<i>in [mm]</i>	3.98 [101.09]
Diameter	<i>in [mm]</i>	6.92 [175.77]
Motor Shaft Diameter	<i>in [mm]</i>	1 [25.4]
<b>Controller Package Size</b>		
Height	<i>in [mm]</i>	3.745 [95.1]
Width	<i>in [mm]</i>	9.80 [248.9]
Length	<i>in [mm]</i>	8.41 [213.6]
<b>System Voltage</b>		
Nominal Battery Voltage	<i>VDC</i>	48
Maximum	<i>VDC</i>	55
Minimum	<i>VDC</i>	42
<b>Motor Speed</b>		<i>rpm</i> 2800
<b>Output Torque</b>		
Peak	<i>lb-ft [Nm]</i>	4.16 [5.64]
Continuous	<i>lb-ft [Nm]</i>	3.1 [4.2]
<b>Motor Mount</b>		Four 5/16-24 tapped holes
90° Bolt Pattern Diameter	<i>in [mm]</i>	6.15 [156.21]
<b>Motor Shaft End</b>		Double "D" w/ 1/2-13 tapped hole
<b>Start/Stop Time</b>		<i>sec</i> 2.5 - 3.5
<b>Weight of Motor</b>		<i>lb [kg]</i> 13.7 [6.2]
<b>Weight of Controller</b>		<i>lb [kg]</i> 9.5 [4.3]

Specifications subject to change without notice.



A World Leader in Hydrostatic Transaxles \* Axial Piston Pumps & Motors \* LSHT Wheel Motors \* Electric L&G Systems  
1411 South Hamilton Street \* Sullivan, IL 61951 \* Phone (217) 728-2581 \* Fax (217) 728-7665 \* [www.hydro-gear.com](http://www.hydro-gear.com)