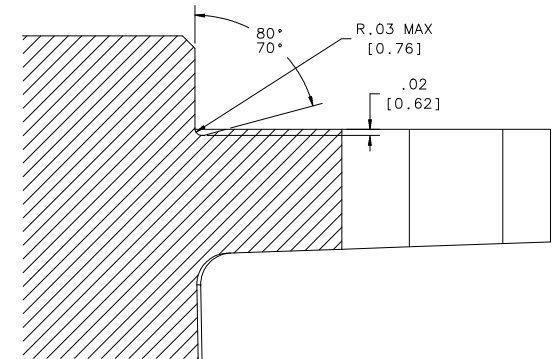
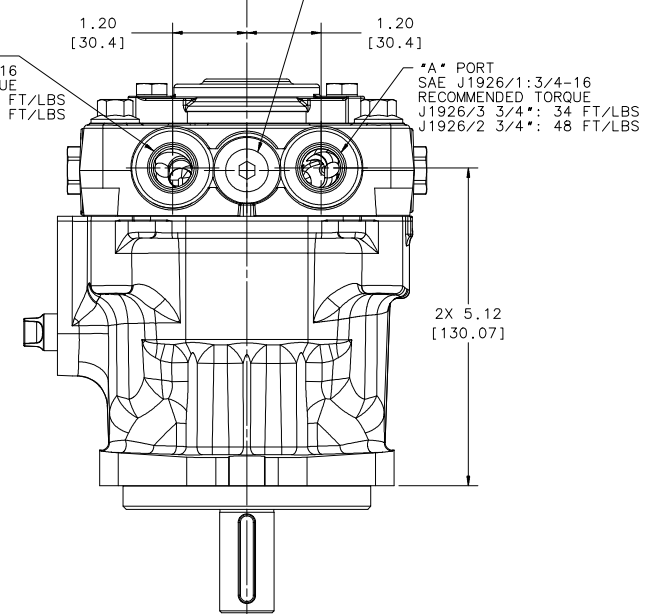
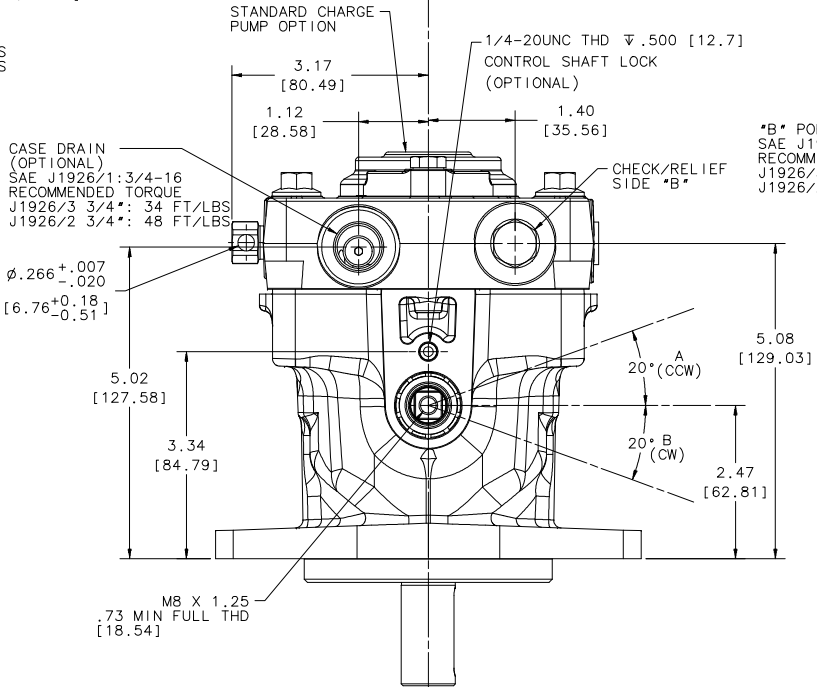
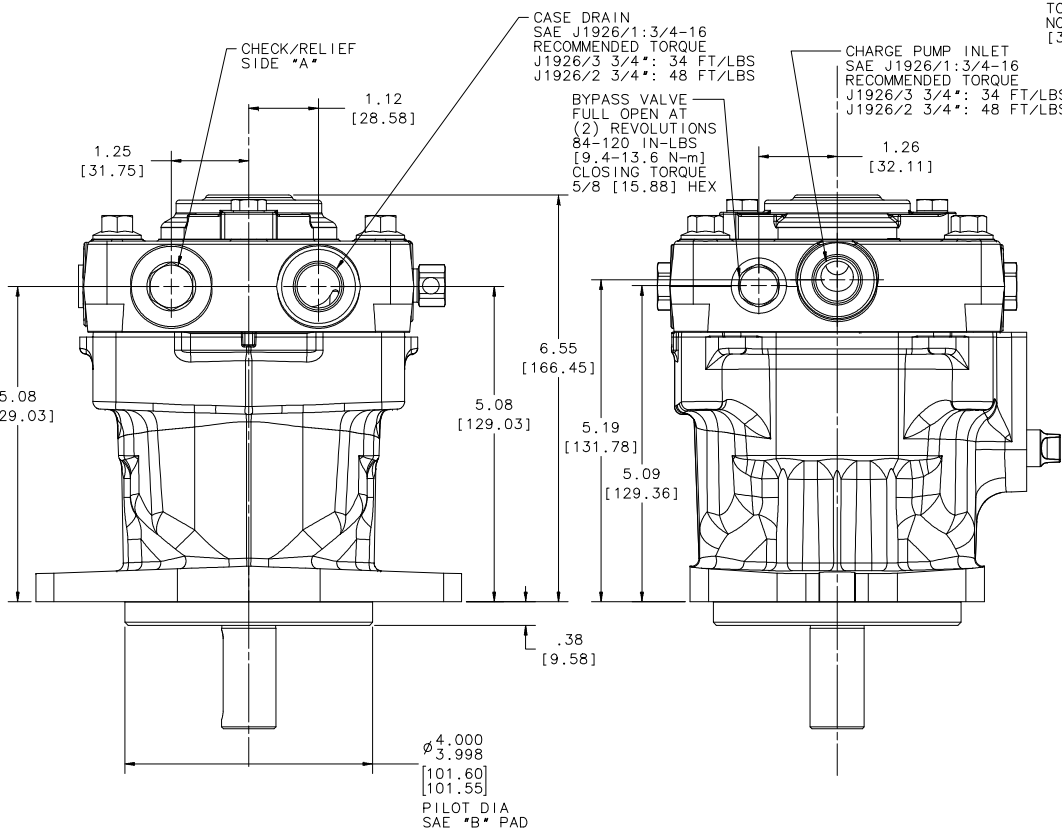
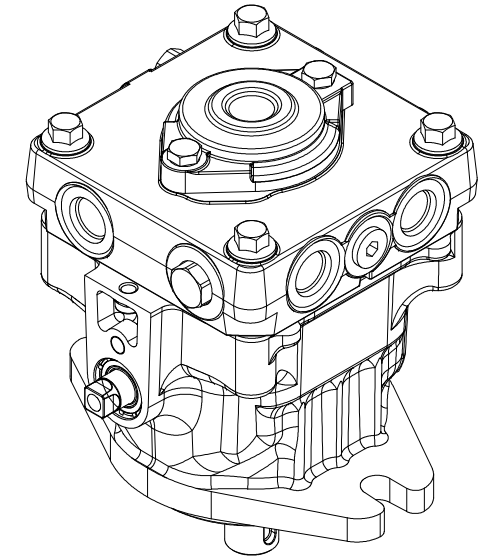
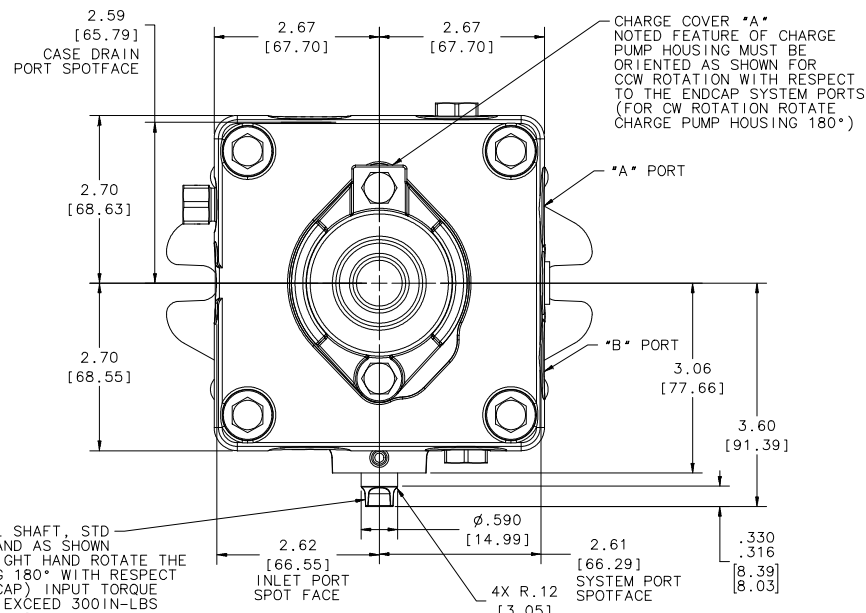


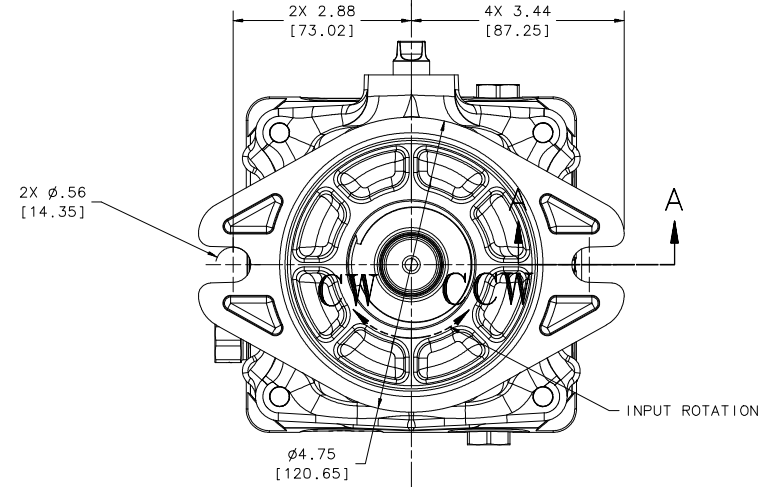
NOTICE - THIS DRAWING CONTAINS HYDRO-GEAR PROPRIETARY INFORMATION. NEITHER RECEIPT NOR POSSESSION THEREOF CONFERS ANY RIGHT TO REPRODUCE, USE, OR DISCLOSE, IN WHOLE OR PART, ANY SUCH INFORMATION WITHOUT WRITTEN AUTHORIZATION FROM HYDRO-GEAR. THE SPECIFICATIONS AND PRODUCT PROFILE DEPICTED HEREIN ARE APPROXIMATE REPRESENTATIONS SUBJECT TO CHANGE WITHOUT NOTICE OR OBLIGATION. CONSULT YOUR HYDRO-GEAR REPRESENTATIVE TO OBTAIN THE ENGINEERING INFORMATION APPROPRIATE TO YOUR APPLICATION.

# BASE UNIT

CONTROL SHAFT SIDE	LEFT HAND		RIGHT HAND	
	CW	CCW	CW	CCW
INPUT SHAFT ROTATION				
CONTROL SHAFT ROTATION	A (CCW)	B (CW)	A (CCW)	B (CW)
PORT A FLOW	IN	OUT	OUT	IN
PORT B FLOW	OUT	IN	IN	OUT



**SECTION A-A**  
SCALE 4:1



SHEET 1 OF 6

**HYDRO-GEAR**

1411 S. HAMILTON ST. SULLIVAN, IL 61951 PHONE (217) 728-2281

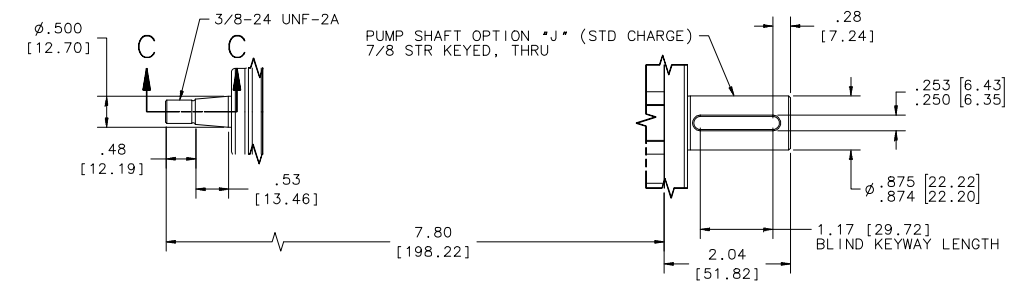
DATE DRAWN	11/06/10
DRAWN BY	KJR
SCALE	FULL
REVISION DATE	06-26-12
PART NUMBER	72148

TECHNICAL MANUAL TM-P-SERIES REV P4  
MODEL NO. CONFIGURATION GUIDE: 72145.XLS

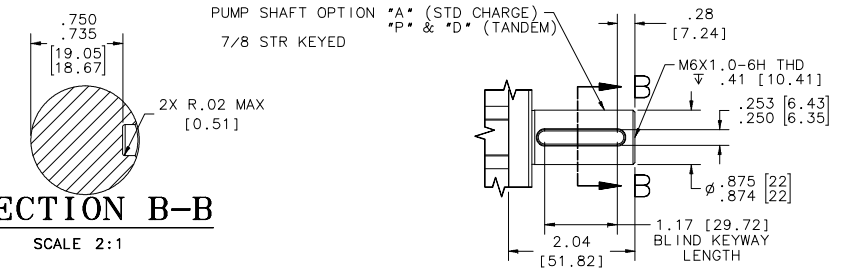
NAME PY VARIABLE DISPLACEMENT  
SALES DRAWING

# INPUT SHAFT OPTIONS

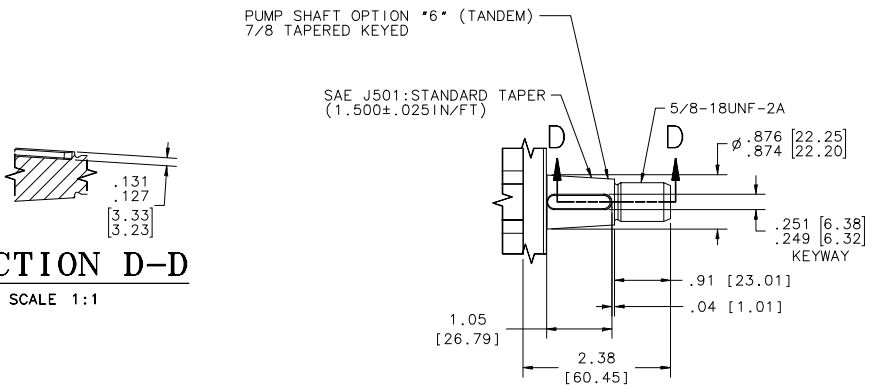
**SECTION C-C**  
SCALE 2:1



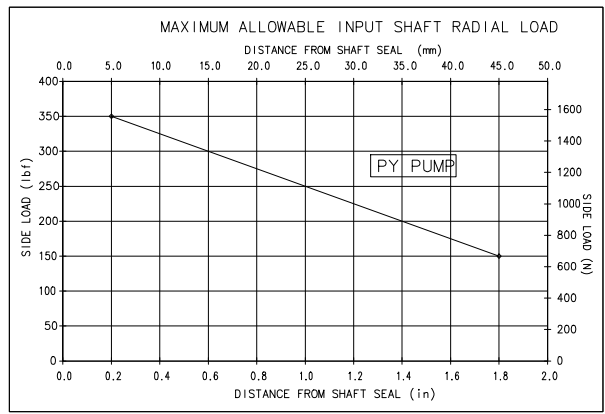
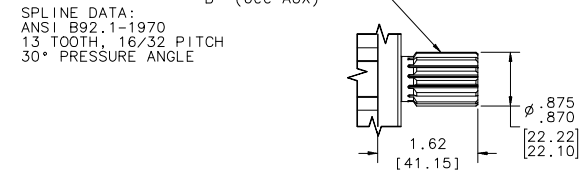
**SECTION B-B**  
SCALE 2:1



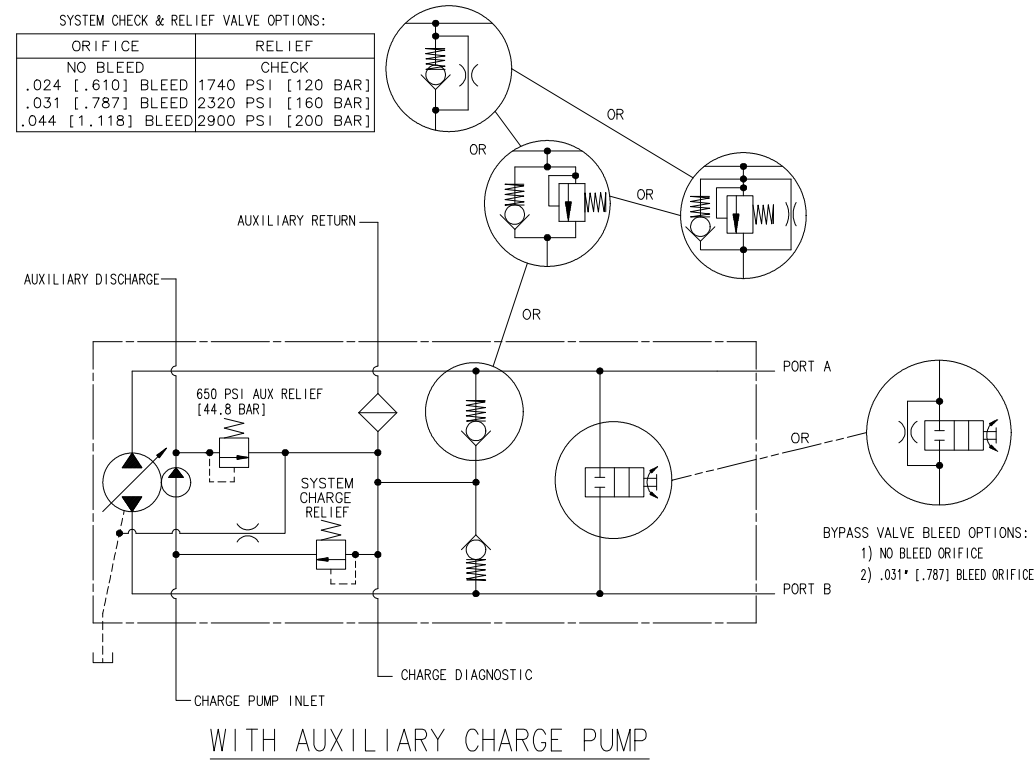
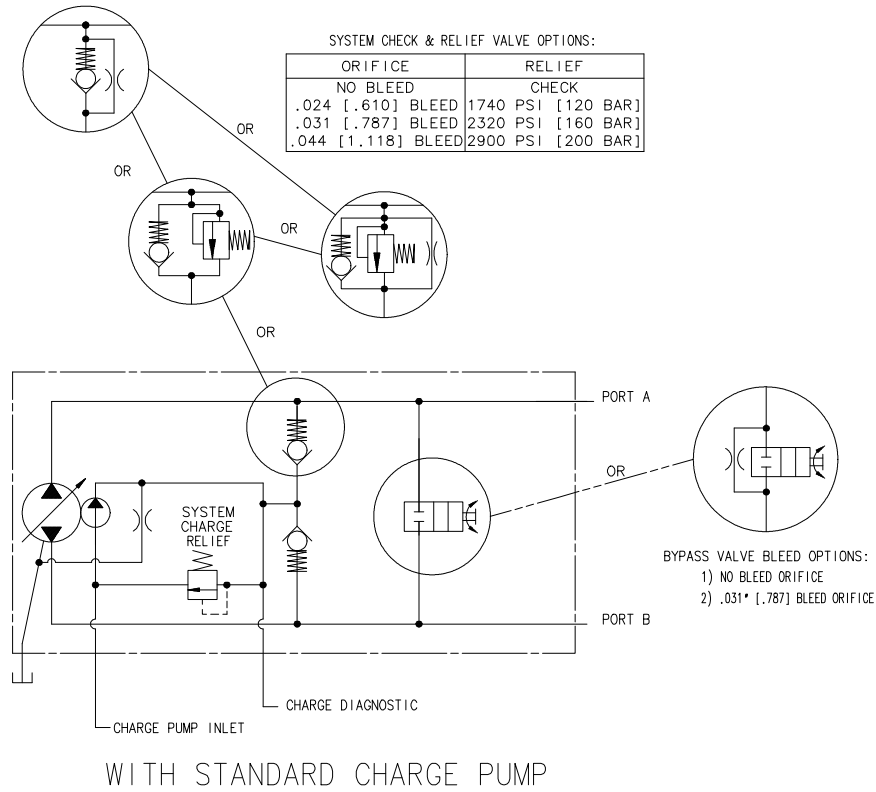
**SECTION D-D**  
SCALE 1:1



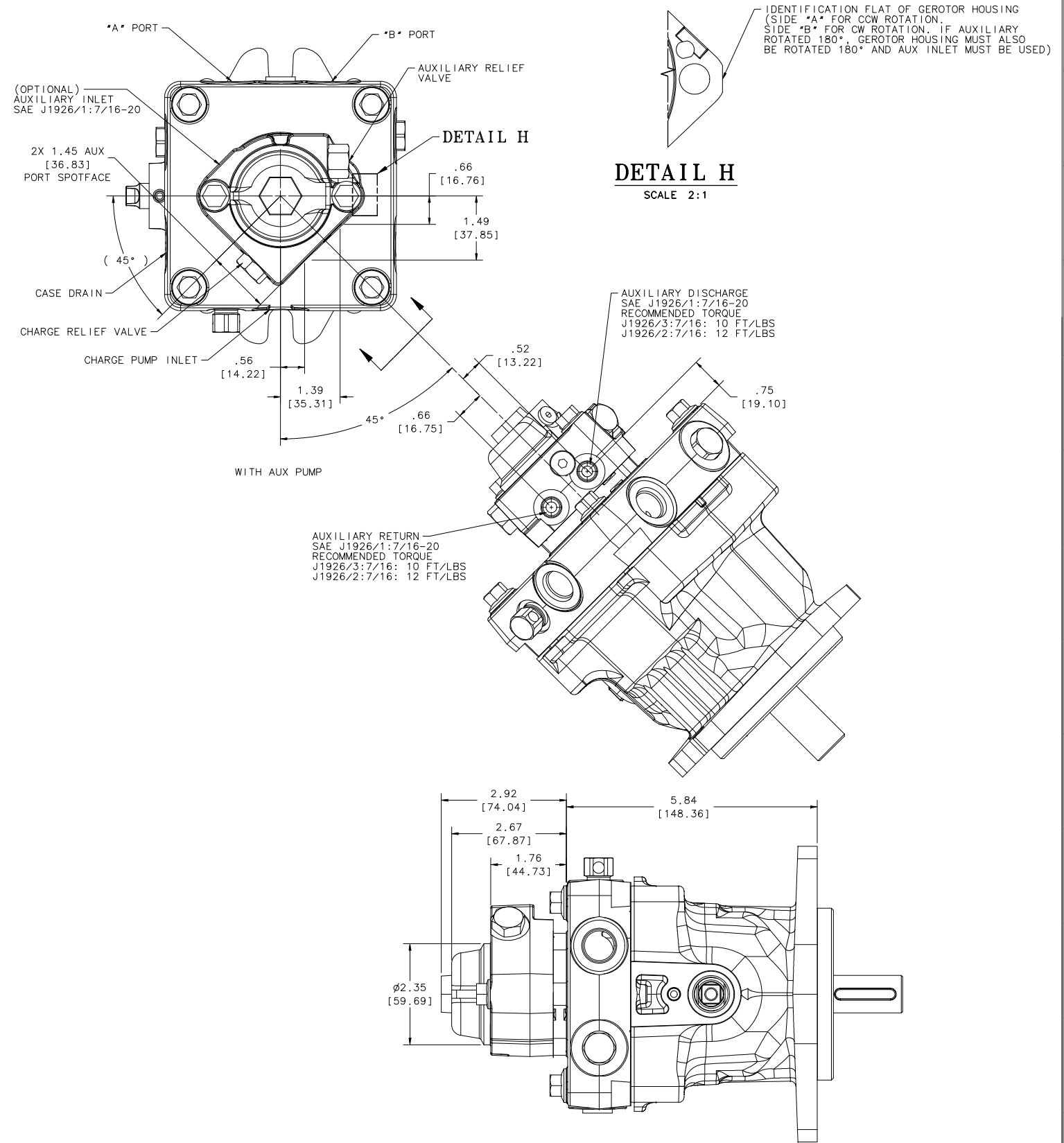
PUMP SHAFT OPTION \*C\* (STD CHARGE)  
\*T\* & \*U\* (TANDEM)  
\*B\* (6cc AUX)



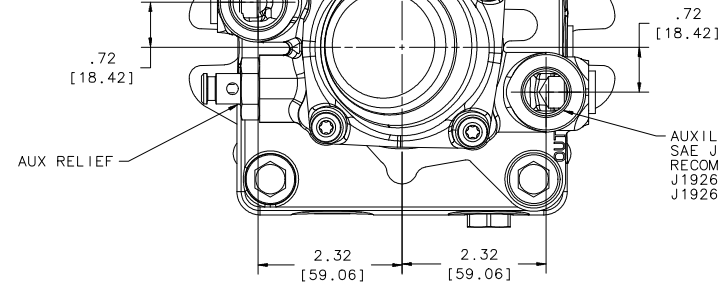
# SYSTEM CHECK VALVE OPTIONS



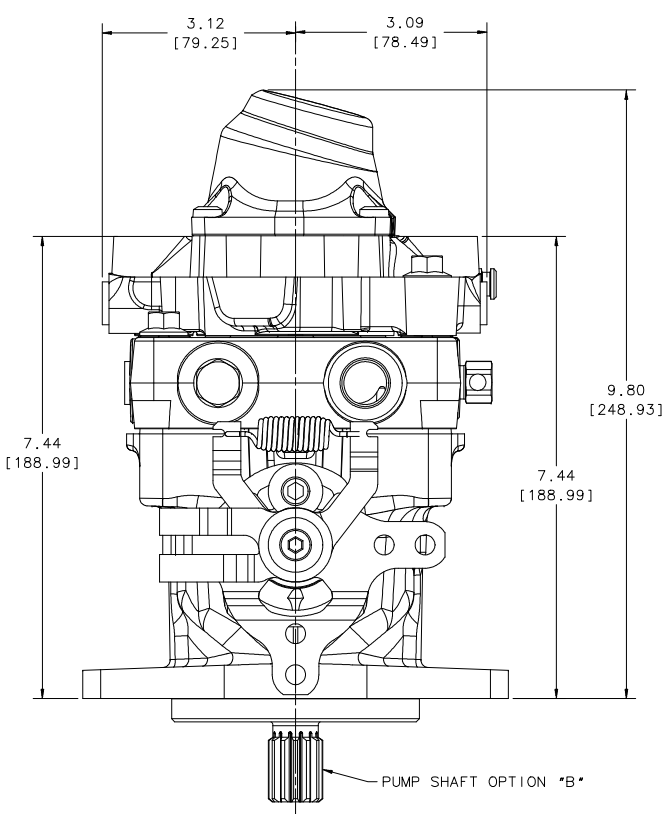
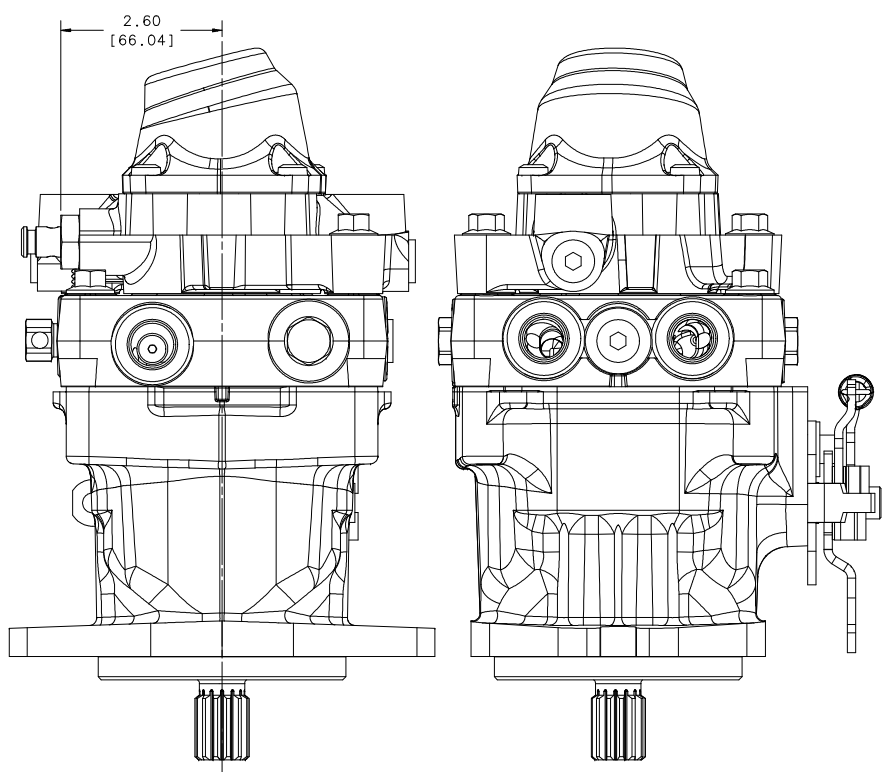
# AUXILIARY PUMP OPTIONS



AUXILIARY & CHARGE INLET  
 SAE J1926/1: 7/8-14  
 RECOMMENDED TORQUE  
 J1926/3 7/8": 37 FT/LBS  
 J1926/2 7/8": 54 FT/LBS

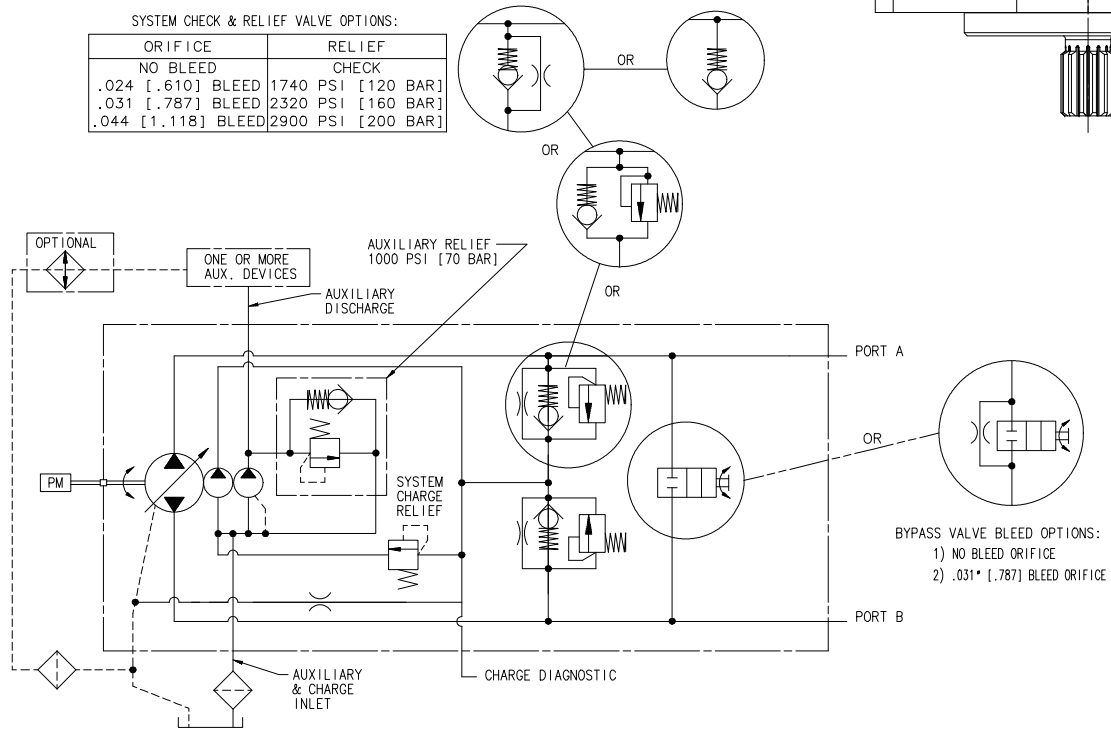


AUXILIARY DISCHARGE  
 SAE J1926/1: 3/4-16  
 RECOMMENDED TORQUE  
 J1926/3 3/4": 34 FT/LBS  
 J1926/2 3/4": 48 FT/LBS



SYSTEM CHECK & RELIEF VALVE OPTIONS:

ORIFICE	RELIEF CHECK
NO BLEED	1740 PSI [120 BAR]
.024 [.610] BLEED	2320 PSI [160 BAR]
.031 [.787] BLEED	2900 PSI [200 BAR]
.044 [1.118] BLEED	



BYPASS VALVE BLEED OPTIONS:  
 1) NO BLEED ORIFICE  
 2) .031" [.787] BLEED ORIFICE

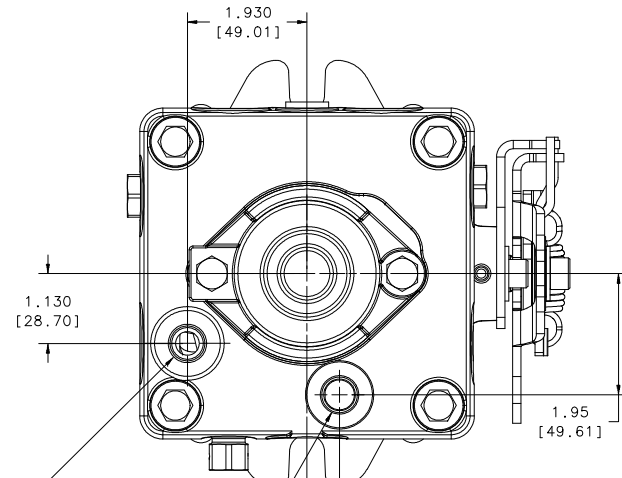
6cc AUXILIARY PUMP  
 CCW INPUT ROTATION  
 W/ STANDARD CHARGE PUMP

SHEET 4 OF 6

FRAME E	11-DEAS
DATE DRAWN	11/02/10
DRAWN BY	KJR
SCALE	FULL
REVISION DATE	06-26-12
PART NUMBER	72148

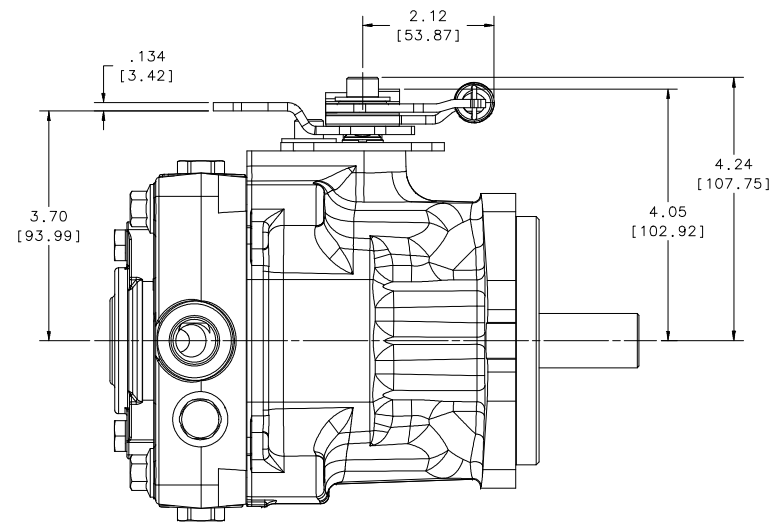
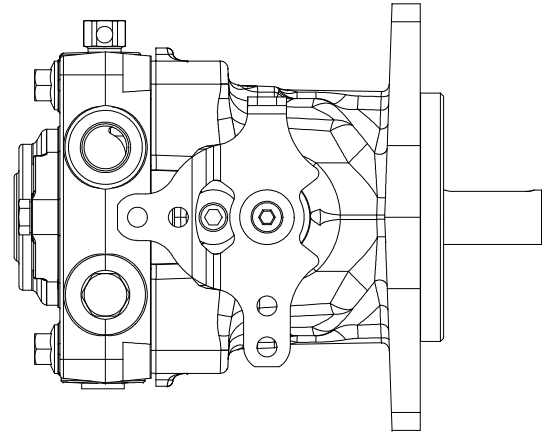
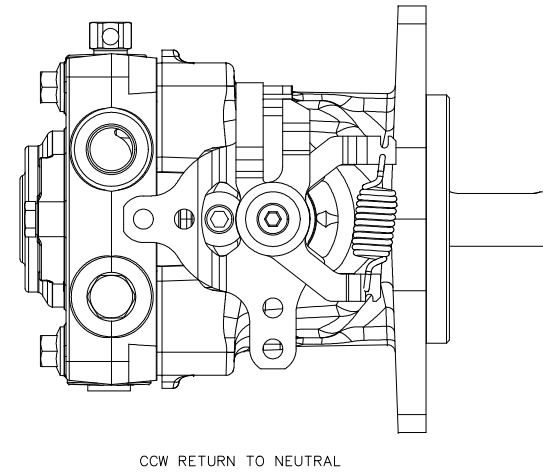
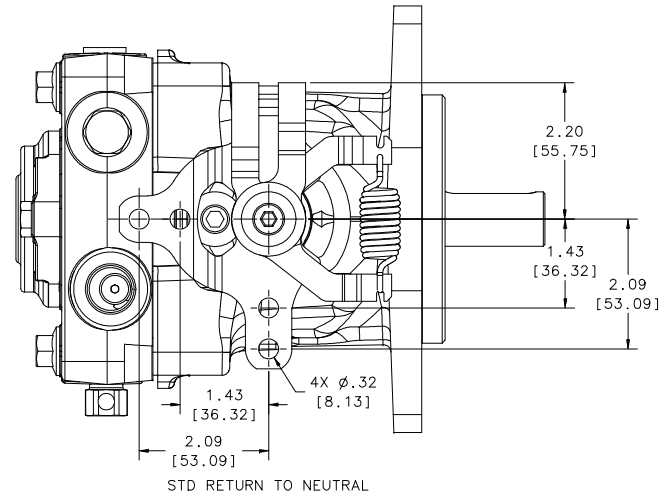
HYDRO-GEAR  
 1411 S. HAMILTON ST., SULLY, ILL. 61081 PHONE (217) 728-2281  
 NAME PY VARIABLE DISPLACEMENT SALES DRAWING

# CONTROL ARM OPTIONS



(OPTIONAL) TOP CASE DRAIN  
SAE J1926/1:9/16-18  
RECOMMENDED TORQUE  
J1926/3:9/16: 19 FT/LBS  
J1926/2:9/16: 24 FT/LBS

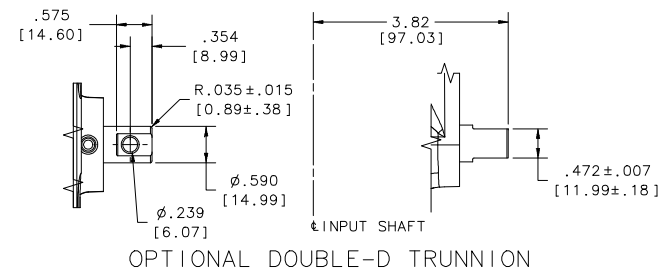
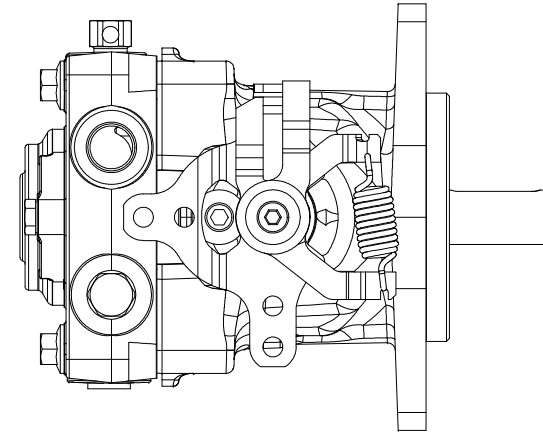
(OPTIONAL) TOP INLET PORT  
SAE J1926/1:9/16-18  
RECOMMENDED TORQUE  
J1926/3:9/16: 19 FT/LBS  
J1926/2:9/16: 24 FT/LBS



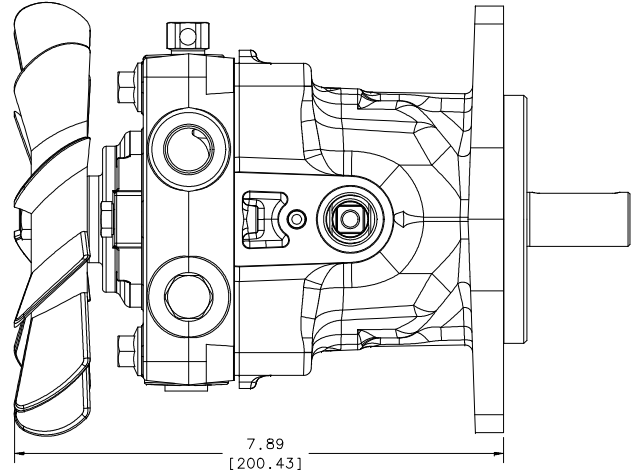
ALL: (OPTIONAL)  
CONTROL ARM MAY BE  
ROTATED 180° WITH RESPECT  
TO TRUNNION SHAFT

(OPTIONAL)  
2X HEAVIER RETURN SPRING

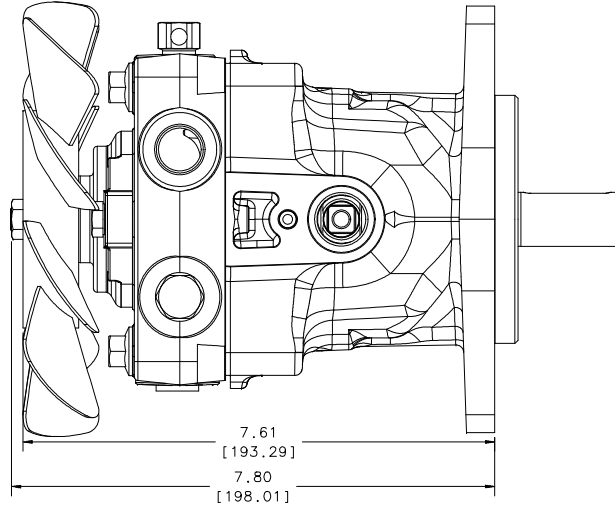
(OPTIONAL)  
CONTROL ARM ONLY



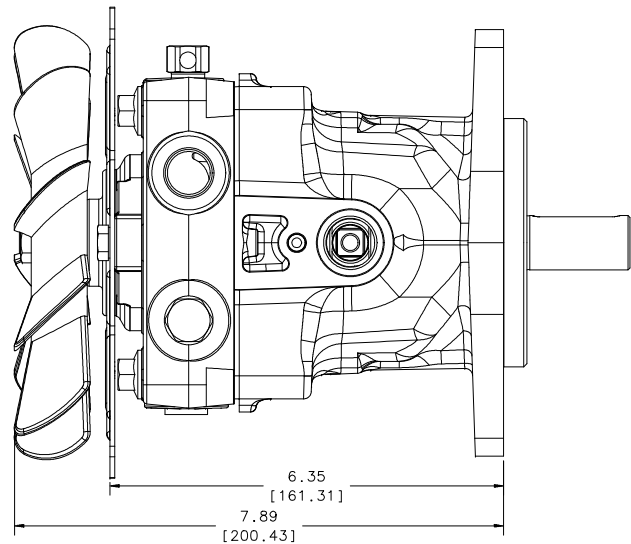
# FAN KIT OPTIONS



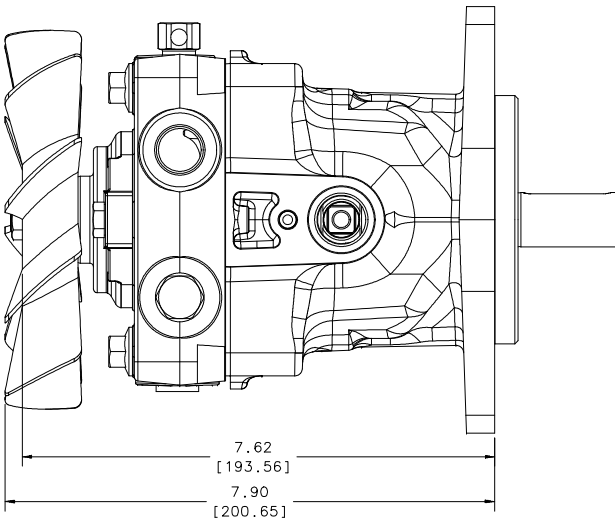
THRU CHARGE WITH  $\phi 7"$  [177.8] FAN (STD)  
(70888 KIT W/ 51691 FAN, CCW INPUT)



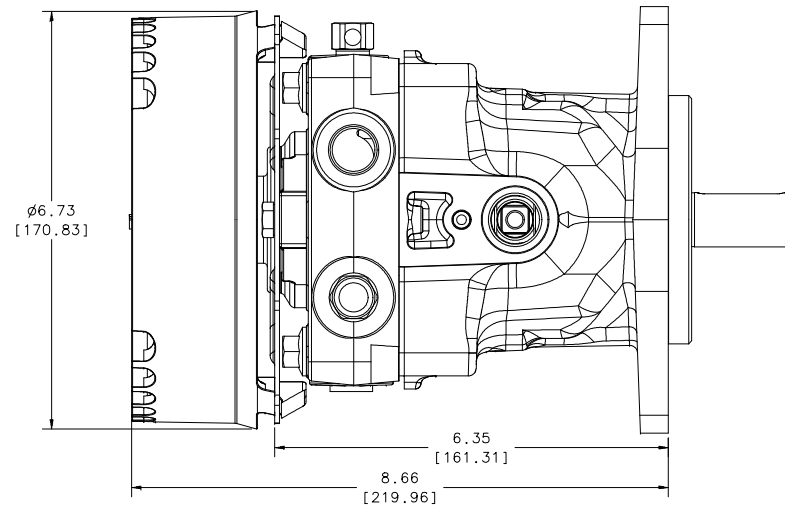
THRU CHARGE WITH  $\phi 7"$  [177.8] FAN (STD)  
(70916 KIT W/ 51601 FAN, CW INPUT)



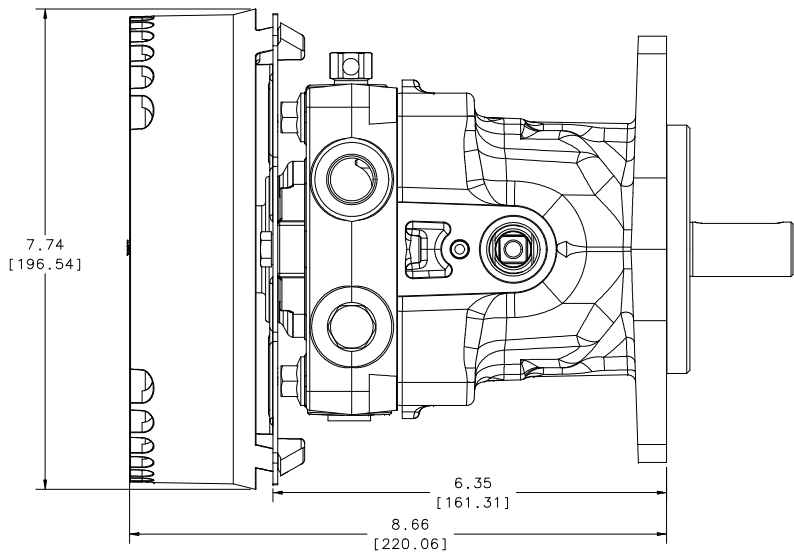
THRU CHARGE WITH  $\phi 7"$  [177.8] FAN  
(51691 FAN, CCW INPUT, W/ BRKT)



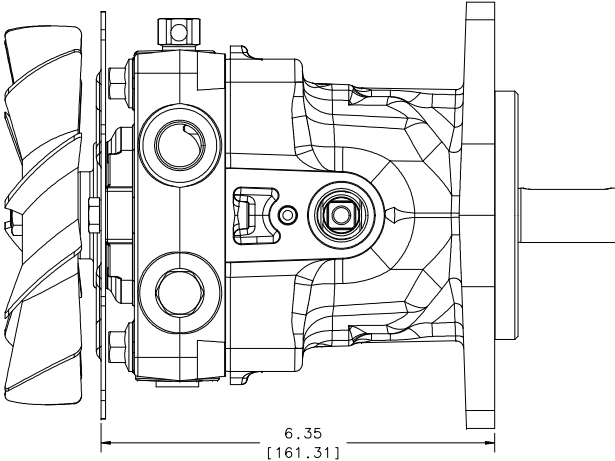
THRU CHARGE WITH  $\phi 6"$  [152.4] FAN  
(52014 FAN, CCW INPUT)



THRU CHARGE WITH  $\phi 6"$  [152.4] FAN  
(52014 FAN, CCW INPUT, W/ BRKT & SHROUD)



THRU CHARGE WITH  $\phi 7"$  [177.8] FAN  
(51691 FAN, CCW INPUT, W/ BRKT & SHROUD)



THRU CHARGE WITH  $\phi 6"$  [152.4] FAN  
(52014 FAN, CCW INPUT, W/ BRKT)