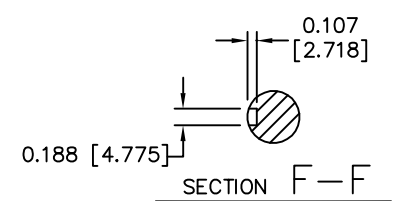
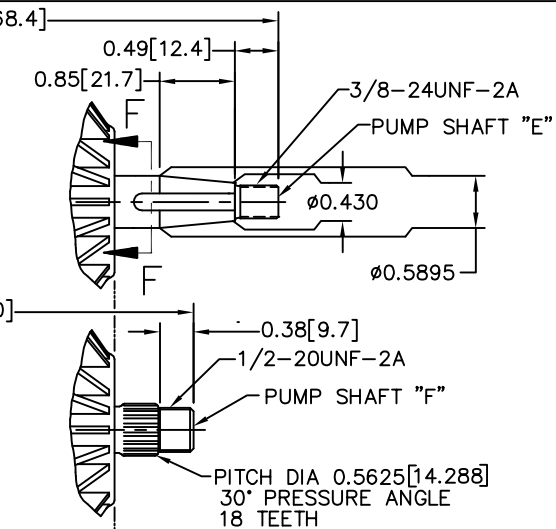
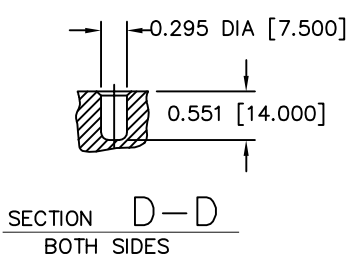
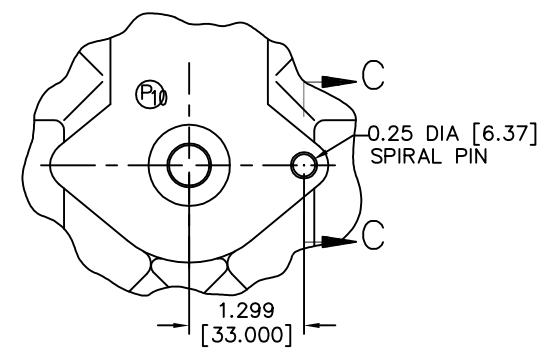
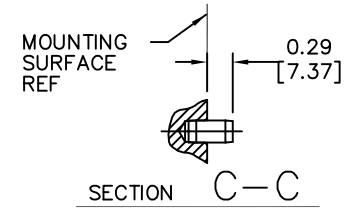
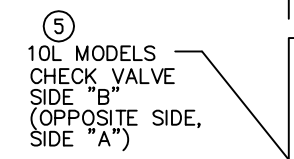
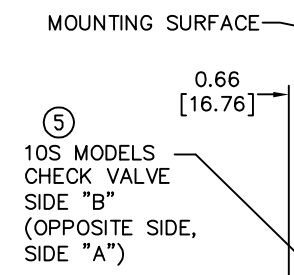
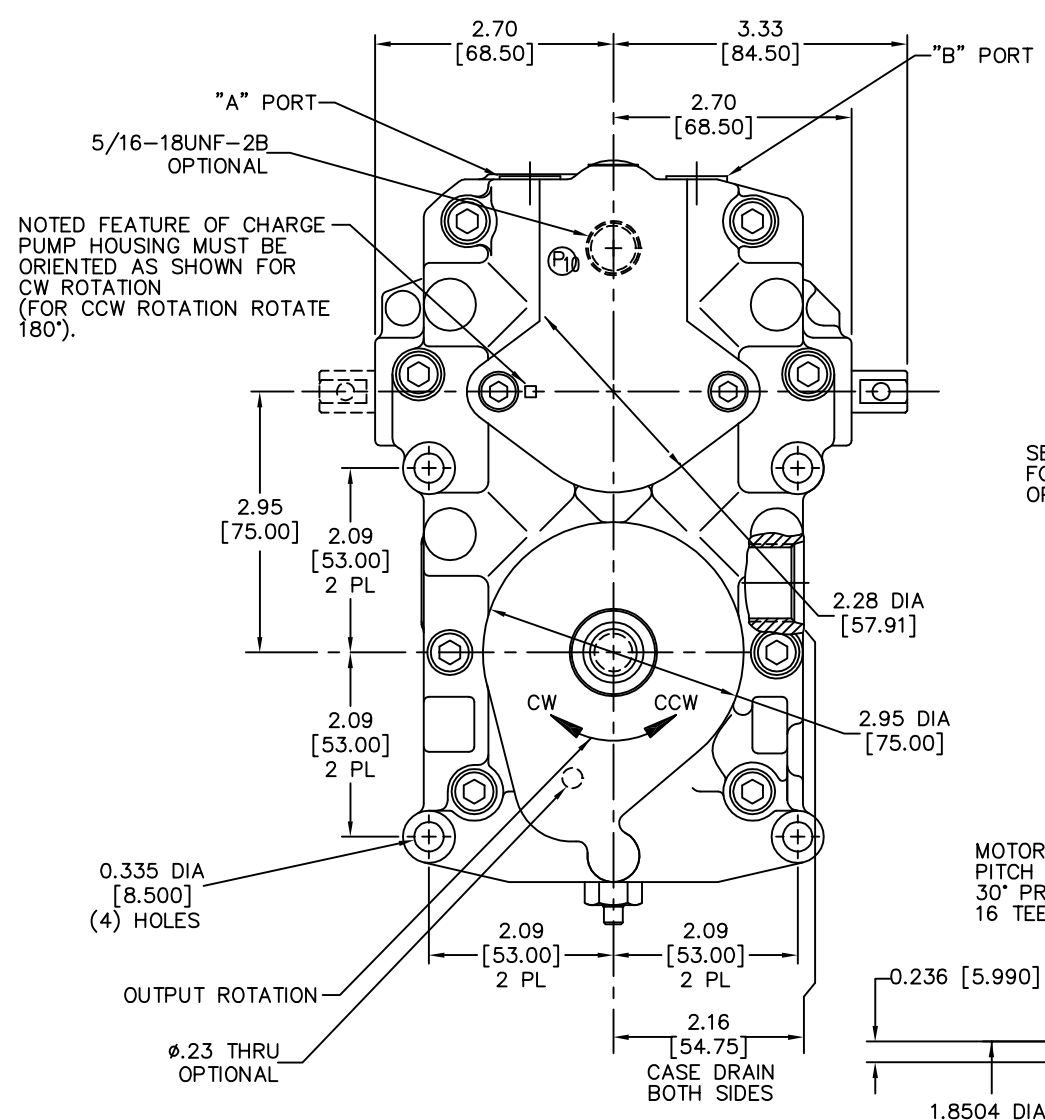


NOTICE - THIS DRAWING CONTAINS HYDRO-GEAR PROPRIETARY INFORMATION. NEITHER RECEIPT NOR POSSESSION THEREOF CONFERS ANY RIGHT TO REPRODUCE, USE, OR DISCLOSE, IN WHOLE OR PART, ANY SUCH INFORMATION WITHOUT WRITTEN AUTHORIZATION FROM HYDRO-GEAR.

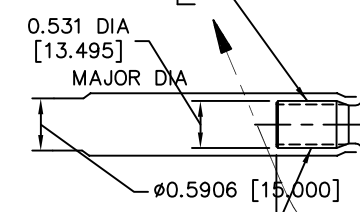
SPECIFICATIONS SUBJECT TO CHANGE WITHOUT NOTICE OR OBLIGATION.



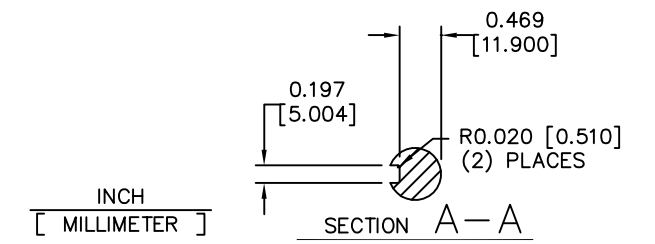
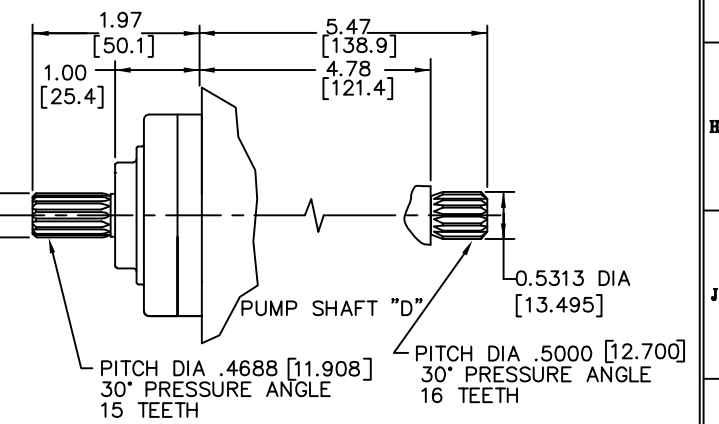
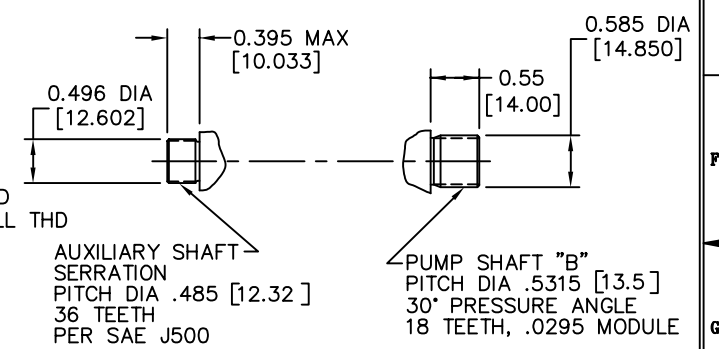
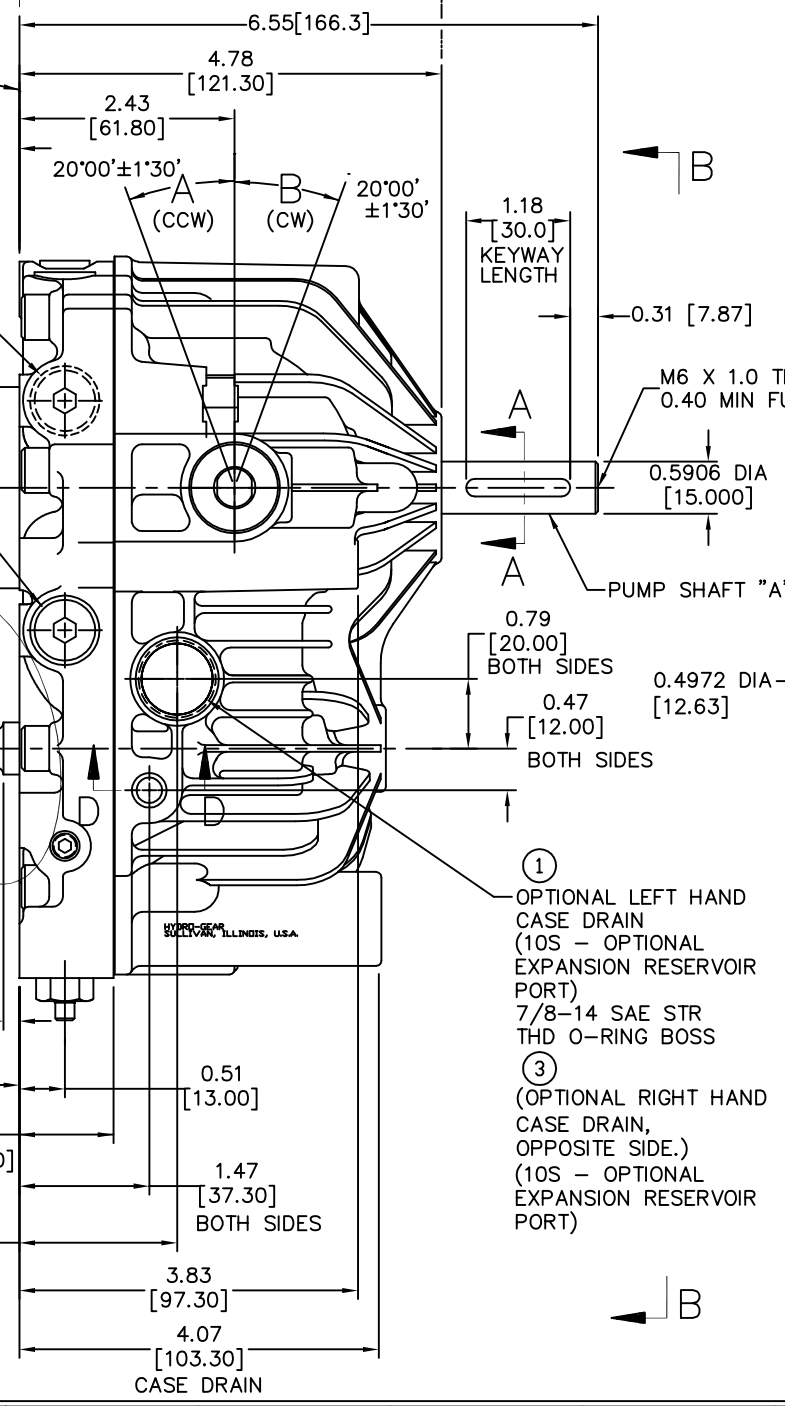
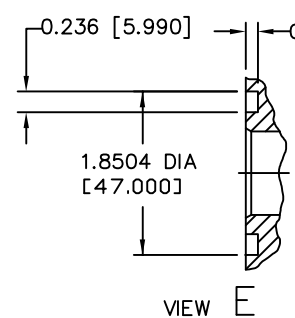
10S-114, 116, 119, 120, 121, 122 & 215 ONLY



SEE SHEET (2) FOR MOTOR SHAFT OPTIONS



MOTOR SHAFT "B"
PITCH DIA .5000 [12.7]
30° PRESSURE ANGLE
16 TEETH, 32/64 PITCH

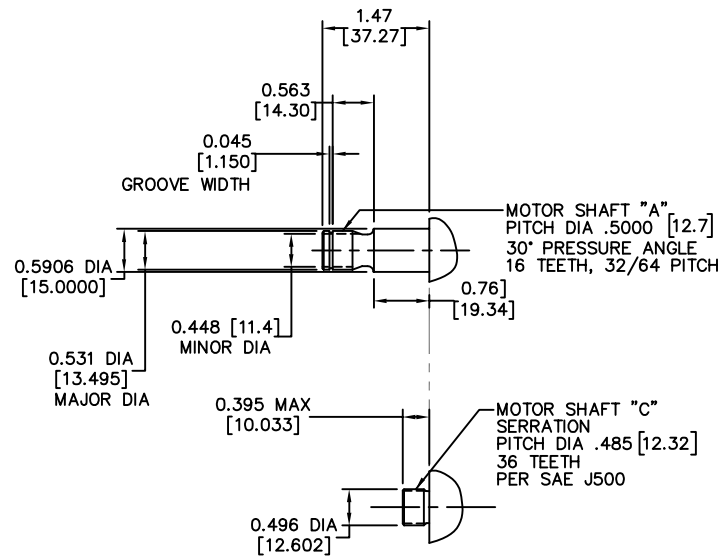


CONTROL SHAFT SIDE	LEFT HAND				RIGHT HAND			
INPUT SHAFT ROTATION	CW	CCW	CW	CCW	CW	CCW	CW	CCW
CONTROL SHAFT ROTATION	A (CCW)	B (CW)	A (CCW)	B (CW)	A (CCW)	B (CW)	A (CCW)	B (CW)
OUTPUT SHAFT ROTATION	CW	CCW	CCW	CW	CCW	CW	CW	CCW

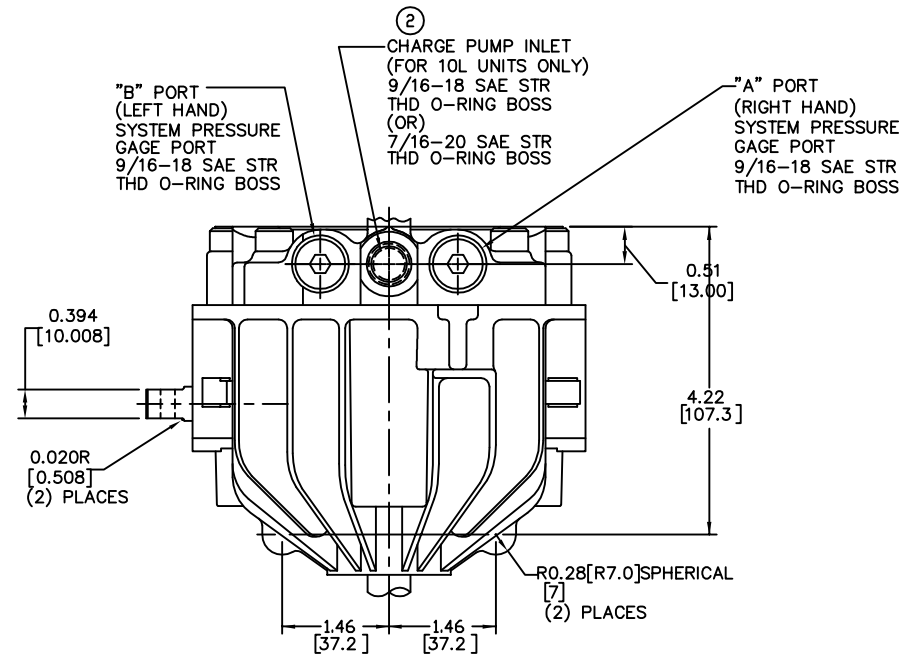
SHEET 1 OF 2

DATE	NAME	FRAME D
12/18/92	S. POPE	
SCALE	REVISION DATE	
FULL	07/13/01	
NAME TRANSMISSION-BDU-10 SALES DRAWING		PART NO. 2003064

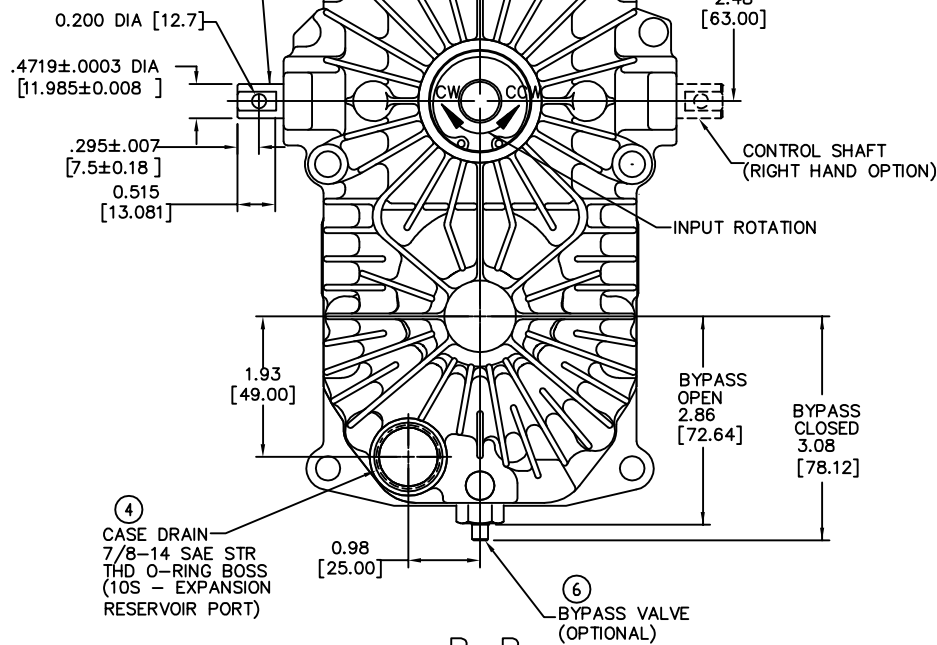
NOTICE - THIS DRAWING CONTAINS HYDRO-GEAR PROPRIETARY INFORMATION. NEITHER RECEIPT NOR POSSESSION THEREOF CONFERS ANY RIGHT TO REPRODUCE, USE, OR DISCLOSE, IN WHOLE OR PART, ANY SUCH INFORMATION WITHOUT WRITTEN AUTHORIZATION FROM HYDRO-GEAR.



MOTOR SHAFT OPTIONS



CONTROL SHAFT (LEFT HAND OPTION)
 INPUT TORQUE NOT TO EXCEED 200 LB-IN [22.6 Nm]



VIEW B-B

⑤ SYSTEM CHECK VALVE BLEED OPTIONS:

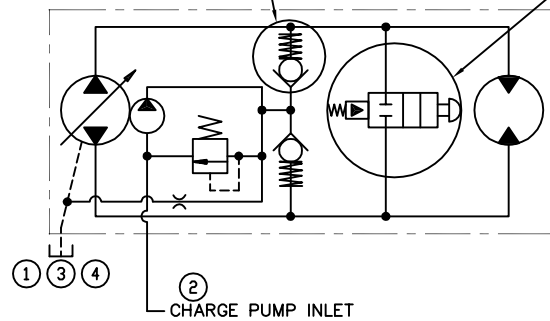
- 1) NO BLEED ORIFICE
- 2) .024" BLEED ORIFICE
- 3) .031" BLEED ORIFICE
- 4) .044" BLEED ORIFICE

⑥ BYPASS VALVE OPTIONS:

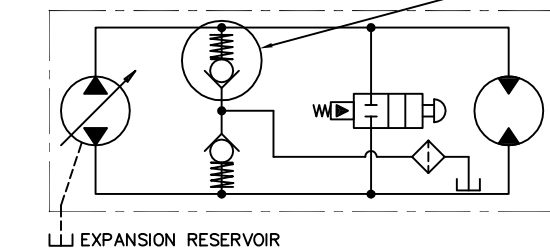
- 1) WITHOUT ANNULUS
- 2) WITH ANNULUS
- 3) NO BYPASS

⑤ SYSTEM CHECK VALVE BLEED OPTIONS:

- 1) NO BLEED ORIFICE
- 2) .024" BLEED ORIFICE
- 3) .031" BLEED ORIFICE
- 4) .044" BLEED ORIFICE



10L



10S

SHEET 2 OF 2

Hydro-Gear 1411 SO. HAMILTON ST. BALSAM LAKE, OHIO PHONE (217) 728-2581	DATE	NAME	FRAME D
	12/18/92	S. POPE	
SCALE	REVISION DATE		
FULL	07/21/01		
PART NO.		CHR	
2003064			