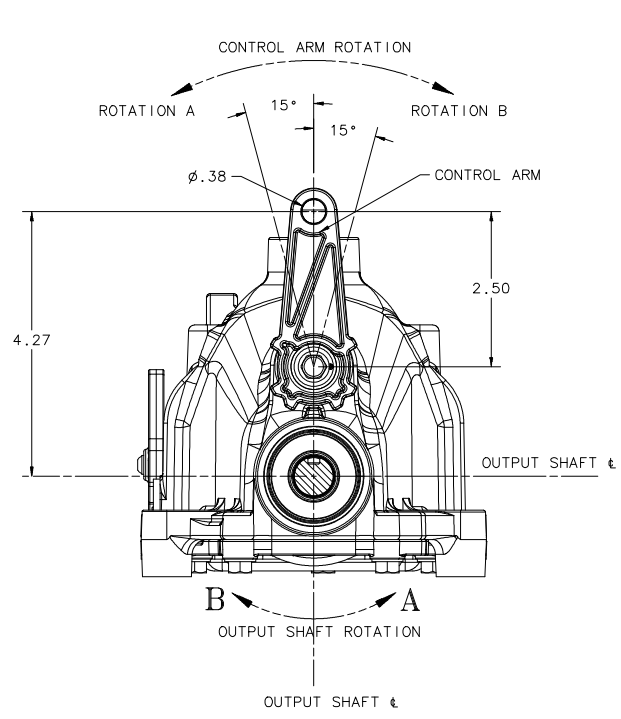
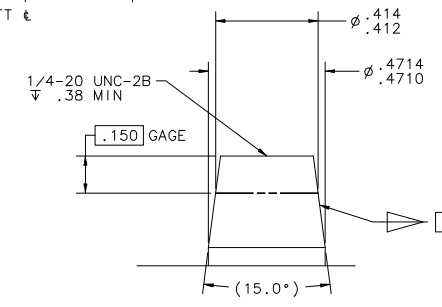
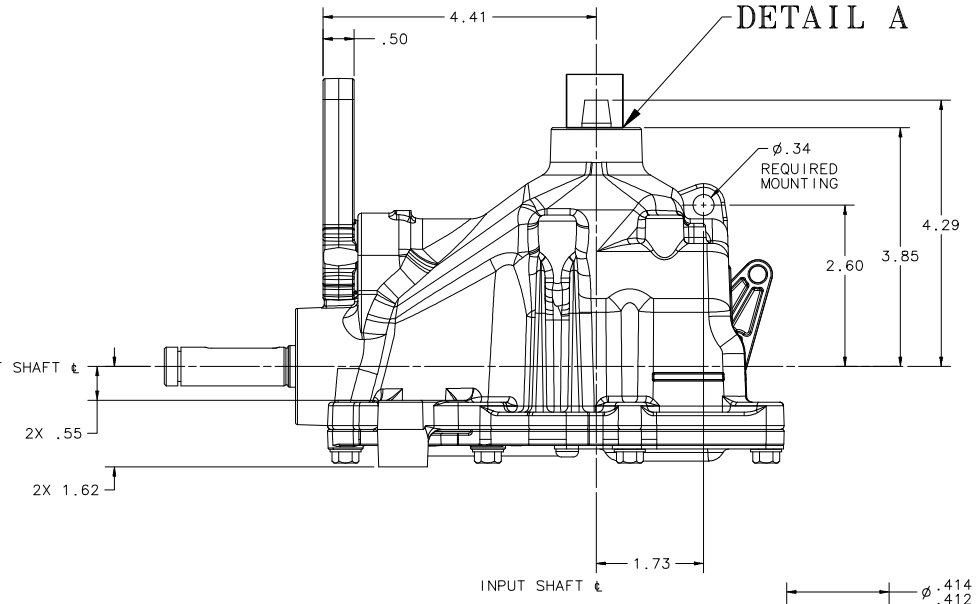
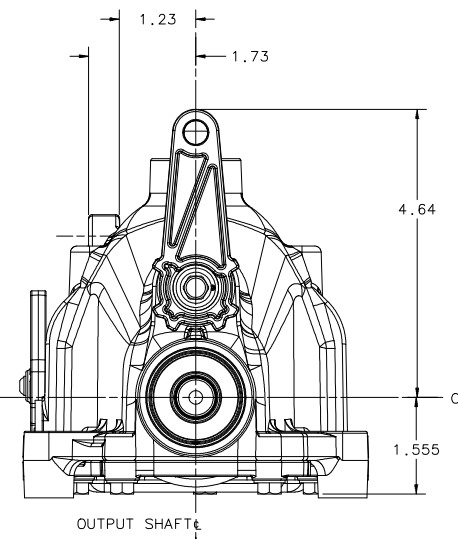
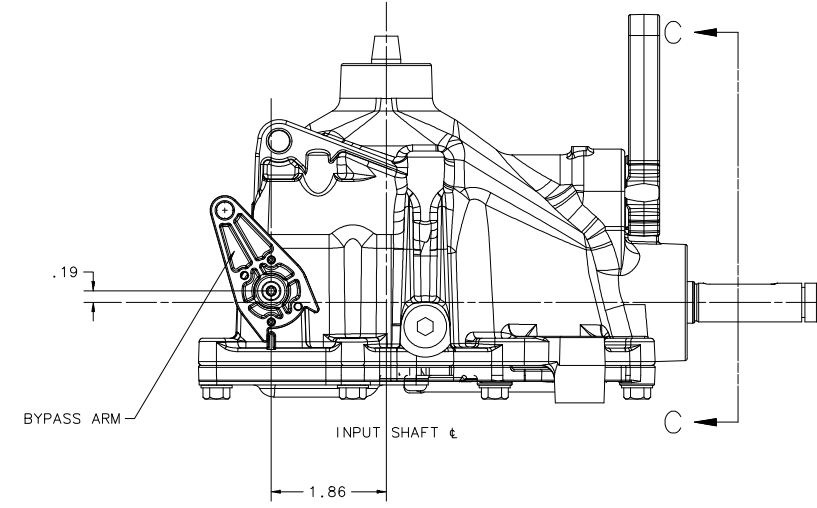
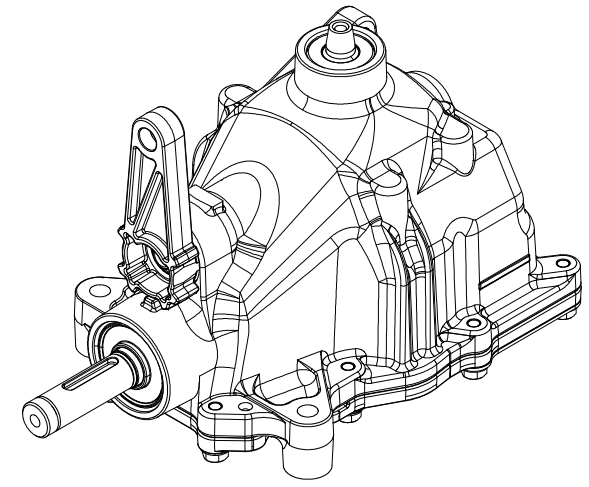
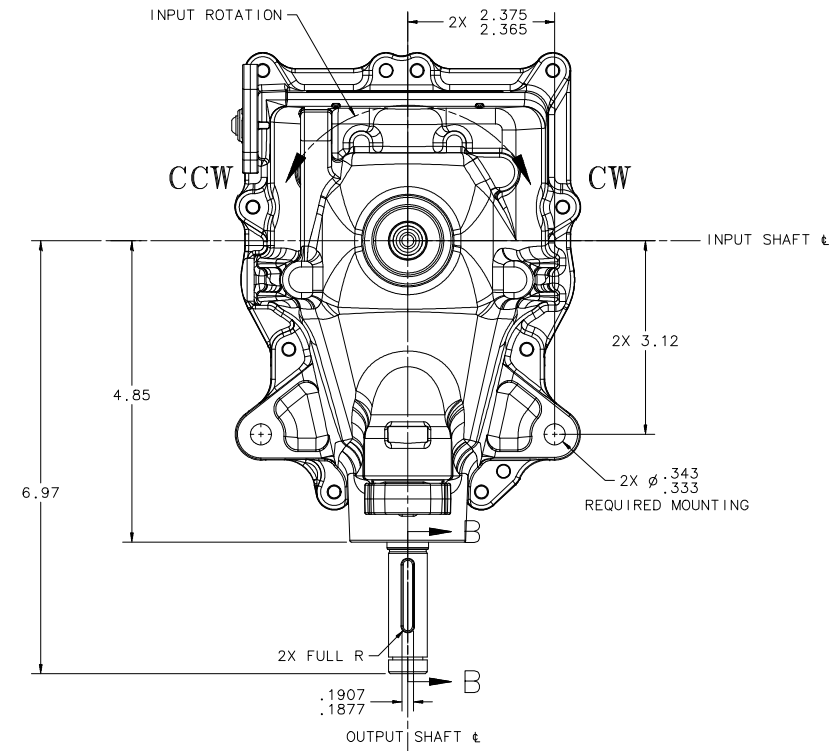


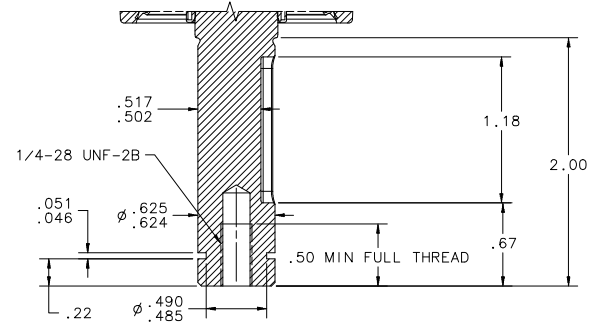
NOTICE - THIS DRAWING CONTAINS HYDRO-GEAR PROPRIETARY INFORMATION. NEITHER RECEIPT NOR POSSESSION THEREOF CONFERS ANY RIGHT TO REPRODUCE, USE, OR DISCLOSE, IN WHOLE OR PART, ANY SUCH INFORMATION WITHOUT WRITTEN AUTHORIZATION FROM HYDRO-GEAR. THE SPECIFICATIONS AND PRODUCT PROFILE DEPICTED HEREIN ARE APPROXIMATE REPRESENTATIONS SUBJECT TO CHANGE WITHOUT NOTICE OR OBLIGATION. CONSULT YOUR HYDRO-GEAR REPRESENTATIVE TO OBTAIN THE ENGINEERING INFORMATION APPROPRIATE TO YOUR APPLICATION.



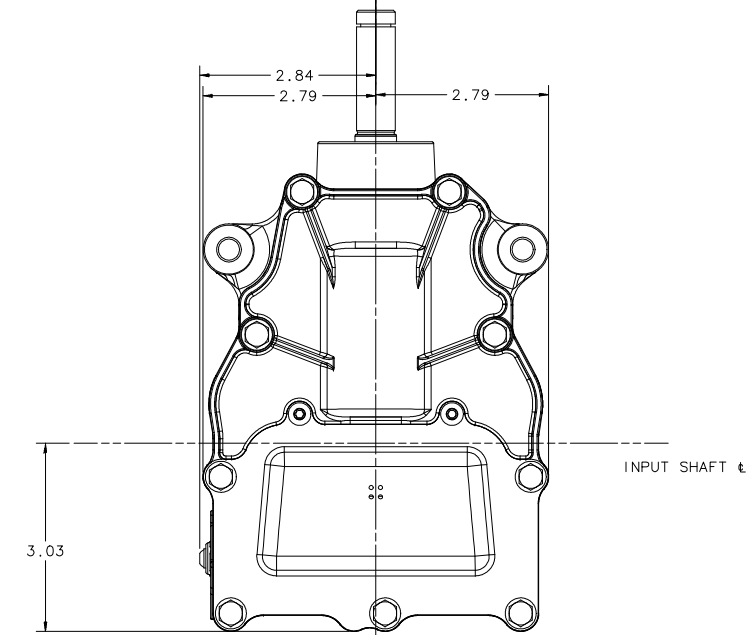
VIEW C-C
SCALE 1:1



DETAIL A
SCALE 4:1



SECTION B-B
SCALE 2:1



- NOTES:
1. REFERENCE MATERIALS:
MODEL NUMBER CONFIGURATION GUIDE - 72321
BOM CONFIGURATION GUIDE - 72322
PRODUCTION PARTS SCHEMATIC - 72279
ASSEMBLY GUIDE - 72323
SERVICE DRAWING - TBD

SHEET 1 OF 2

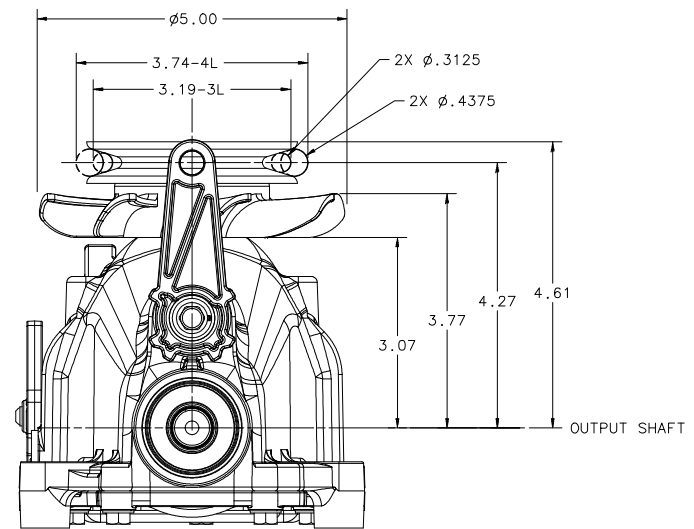
HYDRO-GEAR		DATE DRAWN 07/20/11	1-DEAS
1411 S. HAMILTON ST., SULLY, ILL. 61081 PHONE (217) 728-2281		DRAWN BY JLF	DATE 07/20/11
NAME RT-310 SALES DRAWING		SCALE FULL	REV. DATE 07/11/12
PART NUMBER 72283		DATE 07/20/11	REV. DATE 07/11/12

NOTES:

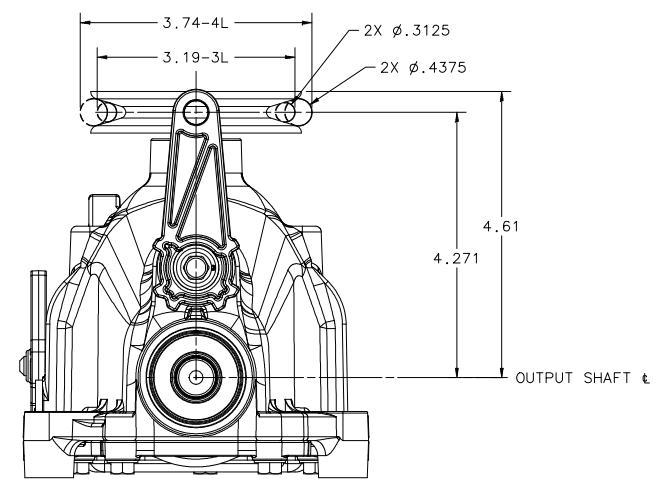
1. MAX ALLOWABLE BYPASS SPEED: 440 RPM AT THE OUTPUT SHAFT.
2. RETAIN OUTPUT SHAFT FROM ROTATING WHEN TORQUING SCREW INTO OUTPUT SHAFT
3. MAX ALLOWABLE TORQUES:
CONTROL ARM - 200 LBS-IN
BYPASS ARM - 25 LBS-IN WHILE ROTATING.

ROTATION DIRECTIONS		
INPUT SHAFT ROTATION	CONTROL ARM ROTATION	OUTPUT SHAFT ROTATION
CCW	A	B
	B	A
CW	A	A
	B	B

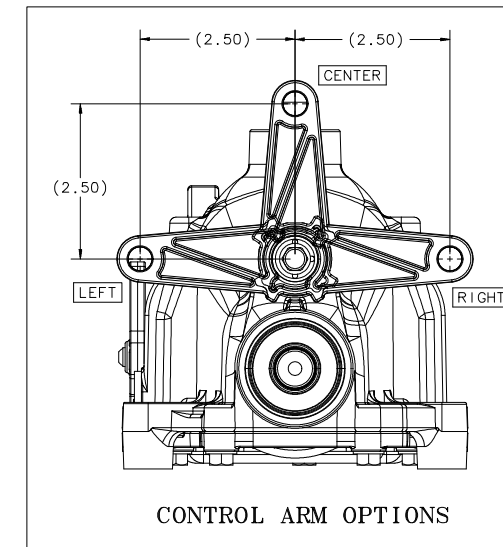
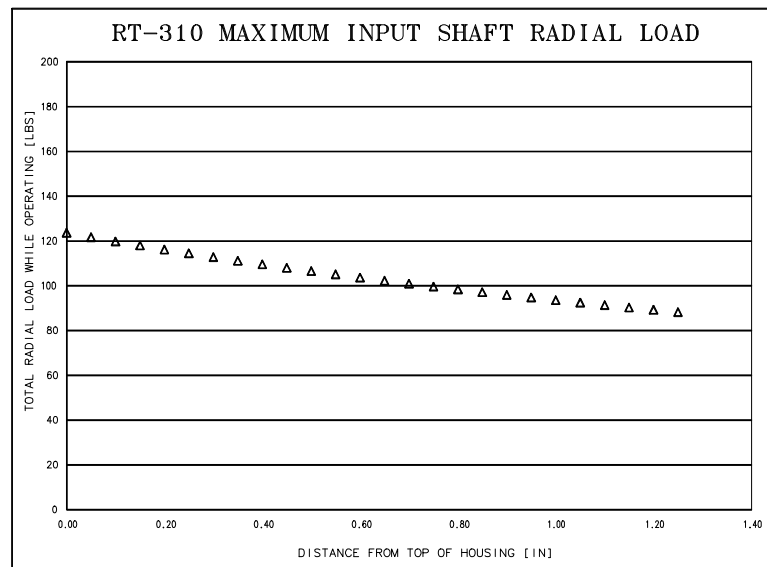
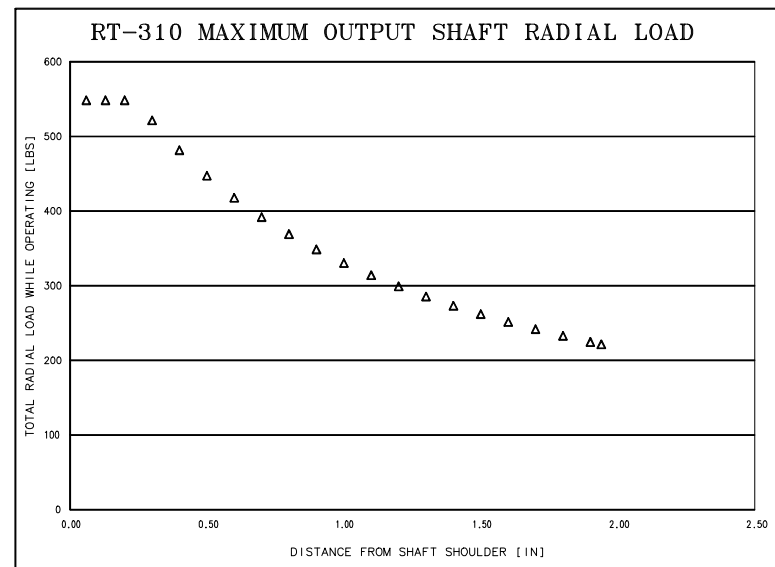
OIL OPTIONS	
WARM WEATHER	20W50
ALL SEASON	0W40



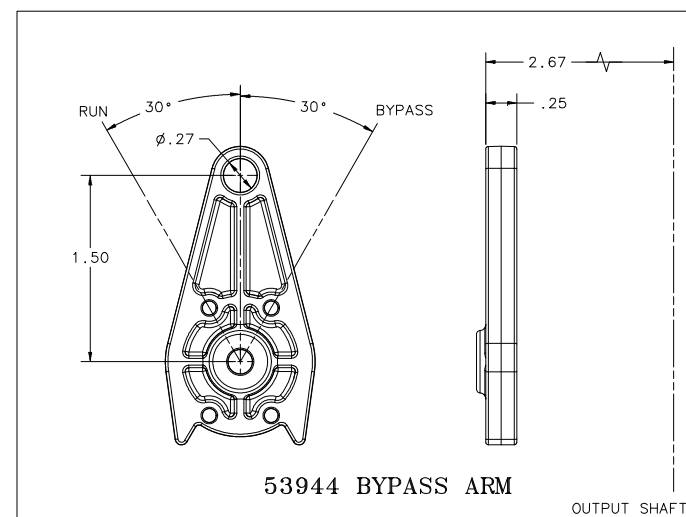
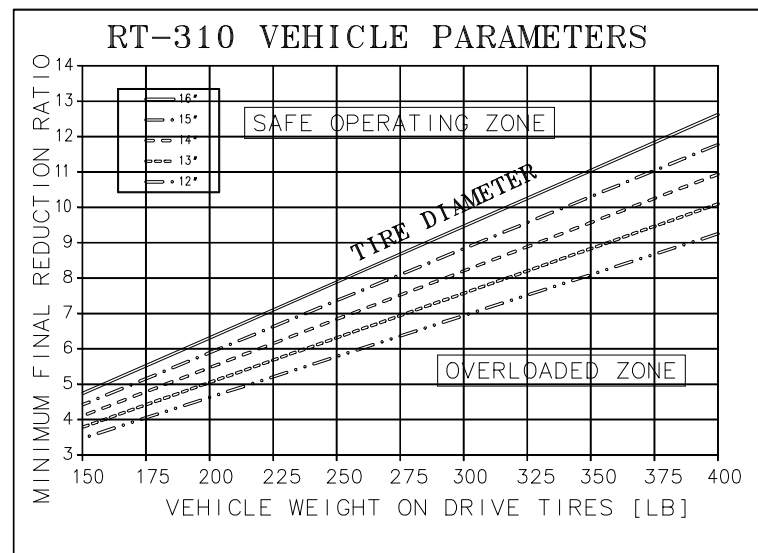
CW/CCW FAN WITH PULLEY



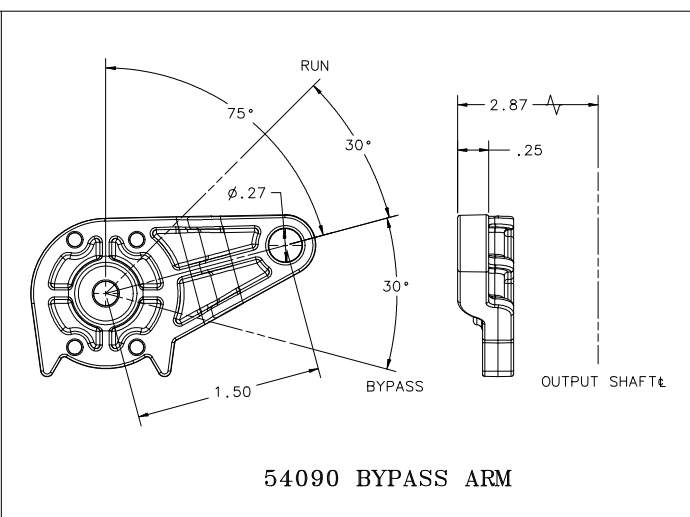
PULLEY ONLY



CONTROL ARM OPTIONS



53944 BYPASS ARM



54090 BYPASS ARM

BYPASS OPTIONS