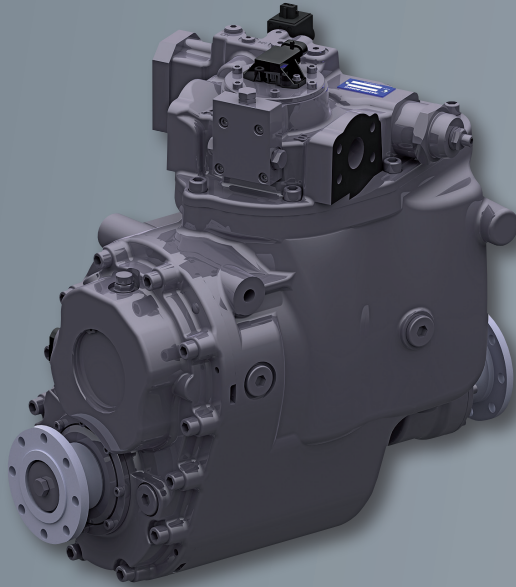


**COMPACT  
DRIVE®**



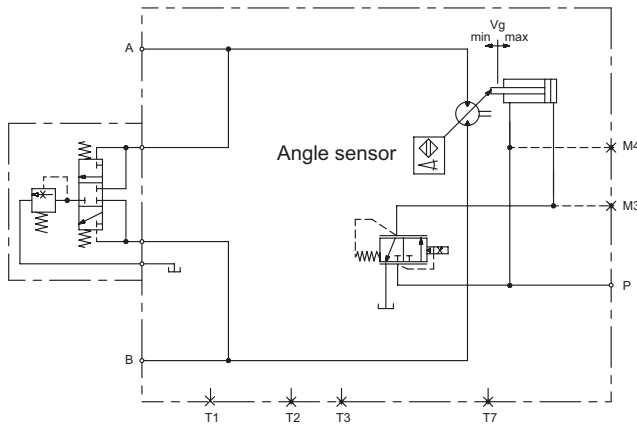
## Advantages at a glance:

- Variable bent axis motor with an integrated shift gear
- Hydrostatic motor
- Area of application: Agricultural and building machinery in open and closed circuit
- Continuously adjustable over the whole angle range
- High pressure and low pressure control
- Optimised for the drive control from SAUER BIBUS
- Greater tractive force by adaptation of auxiliary motors
- Simple system integration
- Combinable with all common hydraulic pumps

### Special features:

- 233 ccm / r displacement
- Swivel angle 45°; therefore high hydraulic transformation range
- Gear ratio from  $i=0.94$  to  $i=1.64$
- Auxiliary motors up to 60 ccm possible
- Integrated flush valve (HP) or flange-on flush valve (LP)
- Electro-proportional control, hydraulic-proportional control, electro-proportional regulation with low pressure adjustment
- Redundant speed sensor with integrated temperature sensor optional
- High speed pulse rate by sensor on rotation group
- Reduced control oil losses
- Fewer components
- Compact installation dimensions
- Large pressure ports
- Optimised high-speed rotation group

### Circuit diagram:



### Connections:

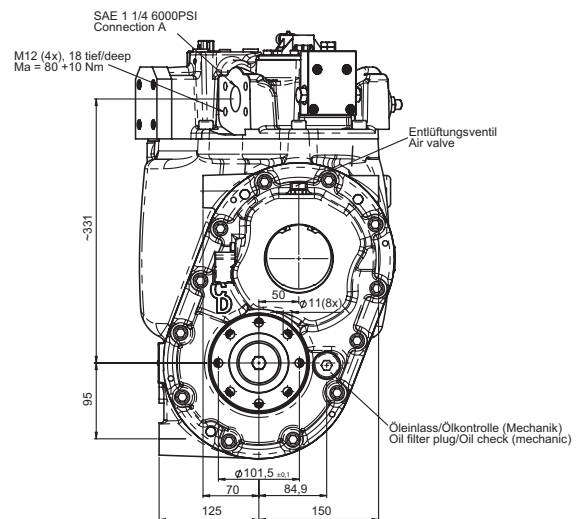
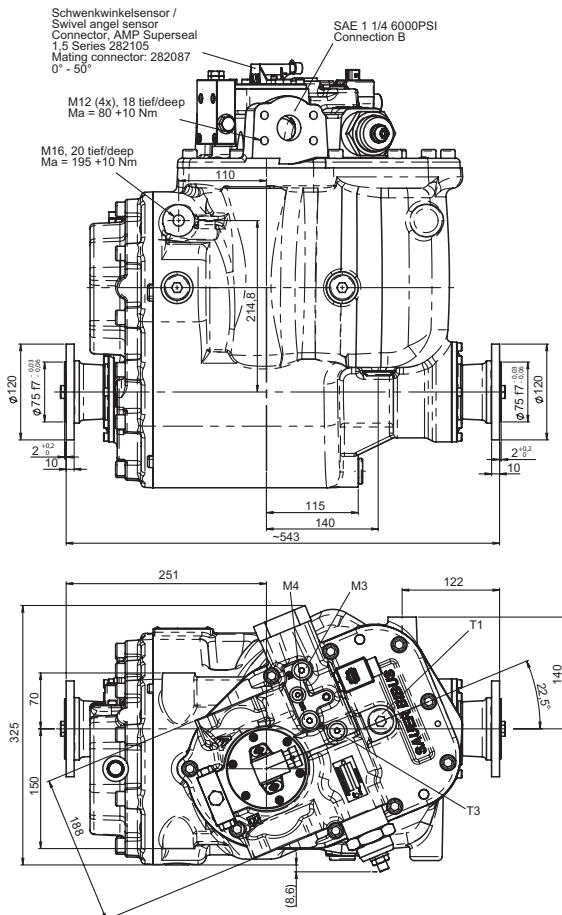
A, B SAE 1 1/4", Code 62  
 M14x1,5  
 M3, Ma M14x1,5

T1, T2 M26x1,5  
 T3, T7 M14x1,5

### Technical data:

→ Rated speed (on kit)	at 45°	1,600 rpm
	at 7°	4,100 rpm
	at 0°	4,300 rpm
→ Max. speed (briefly on kit)	at 45°	1,900 rpm
	at 7°	4,300 rpm
	at 0°	4,500 rpm
→ Max. working pressure		Δp 450 bar
→ Max. pressure briefly		Δp 510 bar
→ Control pressure	HP	Δp 450 bar
	LP	Δp 27 bar
→ Housing pressure	rated	3 bar
	briefly	5 bar
→ Weight		approx. 165 kg

### Dimensions:



→ Detailed installation drawing on request