

Metric Size R(PT) Thread Type

- One -Touch Fittings
- **Compact One -Touch Fittings**
- Speed Controllers
- Metal Body Speed Controllers
- Rotary Joints
- Stop Fittings
- Check Valves
- Ball Valves
- Main Blocks
- Hand Valves
- Hand Slide Valves
- Two-Touch Fittings

COMPACT ONE-TOUCH FITTINGS

Application

- Compact type one-touch joints used in small types of pneumatic piping.
- A wide variety of models are available to meet most your needs.

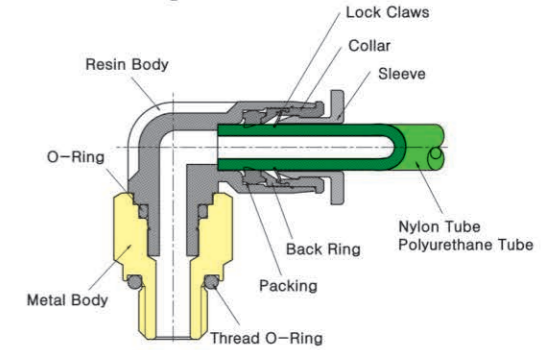
Feature

- The world's smallest quick-fitting joints feature 40% smaller volume ratio and 20% smaller O.D. ratio in comparison to the conventional type.
- The compact type joints, which are nickel plated, are excellent not only in appearance but also in rust resistance.
- The elliptical sleeve helps easy application or removal of the tube in confined space.

Specification

Fluid	Air(No other gases or liquids)	
Working Pressure Range	0~150PSI	0~9Kgf/cm ² (0~900kPa)
Negative Pressure	-29.50 in Hg	-750mmHg(10Torr)
Temperature Range	32~140° F	0~60° C
Applicable Tube Material	Polyurethane and Nylon	

Structural Diagram



Case In Use

- ▶ **POC Model/PCC Model**
The hexagonal shape on the inside of the body makes it possible to tighten the fitting by use of a hexagonal wrench. In the case of POC, PCC a hexagonal wrench must be used due to the round exterior.
- ▶ **PLL Model/PL Model**
Long brass body helps tightening with ease away from any obstacles.

Product Code System

PC 06-01 C

① ② ③ ④

① Type

② Tube Dia(ØD)

Code	03	04	06	10	12	16
Dia	Ø3	Ø4	Ø6	Ø10	Ø12	Ø16

③ Thread Size(T)

	Metric Size			
Code	M3	M5	M6	01
Size	M5×0.8	M5×0.8	M6×1.0	R1/8

④ C=COMPACT

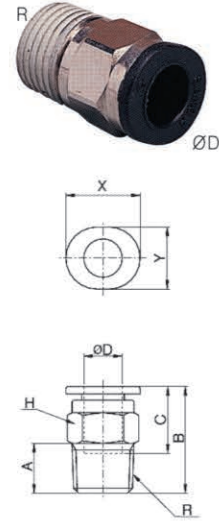
⚠ CAUTION

- Be sure to read the "Common Precautions" and the "Using Precautions of Fitting Series" (P12) before using.
- Tube should be securely pushed into the fitting, otherwise air leakage may occur.

⚠ WARNING

- Be sure to confirm that proper conditions are met, otherwise air leakage may occur.

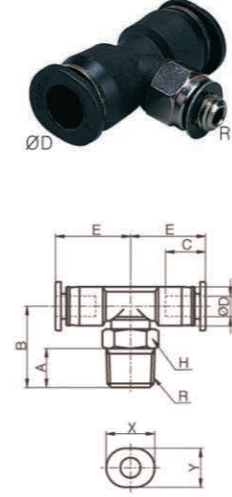
PC-C
Male Straight



MODEL [ØD-T] Tube (Metric) - Thread (R)

MODEL	ØD	R	C	B	H	A	X	Y	Orifice (Ømm)	W.G(g)	Qty/Inbox
PC 03-M3C	3	M3	9.5	13.6	6	3	7	6	1.2	1.3	100
PC 03-M5C	3	M5	9.5	15.7	8	3.5	7	6	2	3.1	100
PC 03-M6C	3	M6	9.5	16.5	8	4.5	7	6	2	3.3	100
PC 04-M3C	4	M3	11.5	17.2	8	3	10	8	1.2	3.2	100
PC 04-M5C	4	M5	11.5	15.7	8	3.5	10	8	2	2.9	100
PC 04-M6C	4	M6	11.5	16.9	8	4.5	10	8	3	3.2	100
PC 04-01C	4	R1/8	11.5	15.7	10	8	10	8	3	6	100
PC 06-M5C	6	M5	12.5	16.8	10	3.5	12	10	2	3.8	100
PC 06-M6C	6	M6	12.5	17.8	10	4.5	12	10	3	4.1	100
PC 06-01C	6	R1/8	12.5	17.9	10	8	12	10	4.5	5.3	100

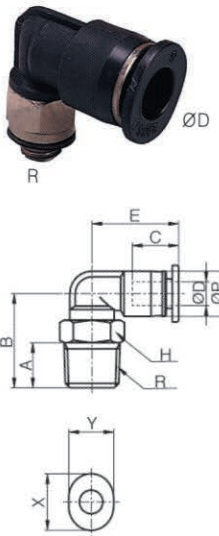
PT-C
Male Branch Tee



MODEL [ØD-T] Tube (Metric) - Thread (R)

MODEL	ØD	R	ØP	C	A	B	E	H	X	Y	Orifice (Ømm)	W.G(g)	Qty/Inbox
PT 03-M3C	3	M3	6	9.5	3	12.4	11.2	6	7	6	1.2	2	100
PT 03-M5C	3	M5	6	9.5	3.5	13.5	11.2	8	7	6	2	3.2	100
PT 03-M6C	3	M6	6	9.5	4.5	14.5	11.2	8	7	6	2.4	3.5	100
PT 04-M3C	4	M3	8	11.5	3	15	13.1	8	10	8	1.2	4.2	100
PT 04-M5C	4	M5	8	11.5	3.5	14.5	13.1	8	10	8	2	4.1	100
PT 04-M6C	4	M6	8	11.5	4.5	15.5	13.1	10	10	8	2.4	4.4	100
PT 04-01C	4	R1/8	8	11.5	8	16.4	13.1	12	10	8	2.8	6.9	100
PT 06-M5C	6	M5	10.5	12.5	3.5	15.5	14.4	8	12	10	2	5.4	100
PT 06-M6C	6	M6	10.5	12.5	4.5	16.5	14.4	8	12	10	2.4	5.7	100
PT 06-01C	6	R1/8	10.5	12.5	8	17.4	14.4	10	12	10	3	8.2	100

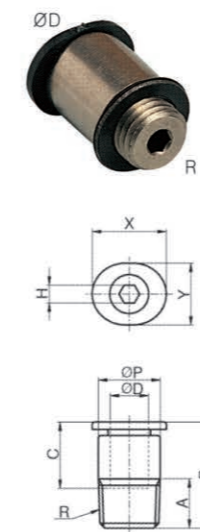
PL-C
Male Elbow



MODEL [ØD-T] Tube (Metric) - Thread (R)

MODEL	ØD	R	ØP	B	E	C	A	H	X	Y	Orifice (Ømm)	W.G(g)	Qty/Inbox
PL 03-M3C	3	M3	6	12.4	11.2	9.5	3	6	7	6	1.2	1.6	100
PL 03-M5C	3	M5	6	13.5	11.2	9.5	3.5	8	7	6	2	2.7	100
PL 03-M6C	3	M6	6	14.5	11.2	9.5	4.5	8	7	6	2.4	3	100
PL 04-M3C	4	M3	8	14	15.6	11.5	3	8	10	8	1.2	3.3	100
PL 04-M5C	4	M5	8	13.5	15.6	11.5	3.5	8	10	8	2	3.3	100
PL 04-M6C	4	M6	8	14.5	15.6	11.5	4.5	10	10	8	2.4	3.7	100
PL 04-01C	4	R1/8	8	15.6	15.6	11.5	8	12	10	8	2.8	6.1	100
PL 06-M5C	6	M5	10.5	13.5	16.9	12.5	3.5	8	12	10	2	3.9	100
PL 06-M6C	6	M6	10.5	14.5	16.9	12.5	4.5	8	12	10	2.4	4.2	100
PL 06-01C	6	R1/8	10.5	16.9	16.9	12.5	8	10	12	10	3	6.8	100

POC-C
Round Male Straight



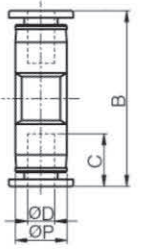
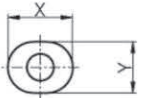
MODEL [ØD-T] Tube (Metric) - Thread (R)

MODEL	ØD	R	C	A	B	H	ØP	X	Y	Orifice (Ømm)	W.G(g)	Qty/Inbox
POC 03-M3C	3	M3	9.5	3	15.9	1.5	6	7	6	1.2	1.7	100
POC 03-M5C	3	M5	9.5	3.5	17.5	2	8	7	6	2	3.8	100
POC 03-M6C	3	M6	9.5	4.5	19.7	3	8	7	6	2	4.2	100
POC 04-M3C	4	M3	11.5	3	18	1.5	8	10	8	1.2	3.4	100
POC 04-M5C	4	M5	11.5	3.5	18.7	2.5	8	10	8	2	3.8	100
POC 04-M6C	4	M6	11.5	4.5	19.7	3	8	10	8	3	4	100
POC 04-01C	4	R1/8	11.5	8	15.8	3	10	10	8	3	5.5	100
POC 06-M5C	6	M5	12.5	3.5	17.3	2.5	10	12	10	2	3.9	100
POC 06-M6C	6	M6	12.5	4.5	18.3	3	10	12	10	3	4.1	100
POC 06-01C	6	R1/8	12.5	8	16.9	4	10	12	10	4.5	4.5	100

PUC-C
Union Straight

MODEL [ØD-T] Tube (Metric) - Thread (R)

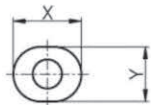
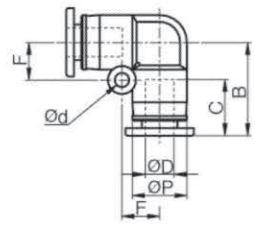
MODEL	ØD	ØP	B	C	X	Y	Orifice (Ømm)	W.G(g)	Qty/Inbox
PUC 03C	3	6	20.4	9.5	7	6	2.5	1.1	100
PUC 04C	4	8	23.8	11.5	10	8	3	2	100
PUC 06C	6	10.5	25.1	12.5	12	10	4	3.2	100



PUL-C
Union Straight

MODEL [ØD-T] Tube (Metric) - Thread (R)

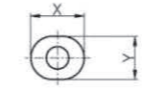
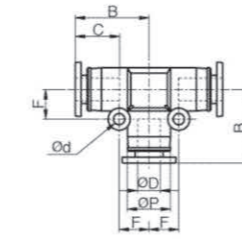
MODEL	ØD	ØP	Ød	C	F	B	X	Y	Orifice (Ømm)	W.G(g)	Qty/Inbox
PUL 03C	3	6	3.2	9.5	4.5	11.4	7	6	2.5	1.1	100
PUL 04C	4	8	3.2	11.5	5.8	13.9	10	8	3	2.1	100
PUL 06C	6	10.5	3.2	12.5	6.5	15.4	12	10	4	3.4	100



PUT-C
Union Tee

MODEL [ØD-T] Tube (Metric) - Thread (R)

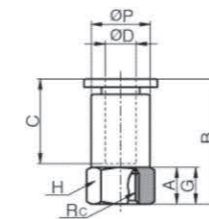
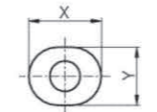
MODEL	ØD	ØP	Ød	F	C	B	X	Y	Orifice (Ømm)	W.G(g)	Qty/Inbox
PUT 03C	3	6	3.2	4.5	9.5	11.4	7	6	2.5	1.7	100
PUT 04C	4	8	3.2	5.8	11.5	13.9	10	8	3	3.1	100
PUT 06C	6	10.5	3.2	6.5	12.5	15.4	12	10	4	5	100



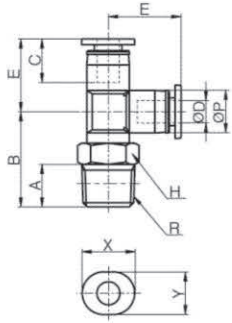
PCF-C
Female Straight

MODEL [ØD-T] Tube (Metric) - Thread (R)

MODEL	ØD	Rc	G	C	A	B	H	ØP	X	Y	Orifice (Ømm)	W.G(g)	Qty/Inbox
PCF 03-M3C	3	M3	5	9.5	3	14.9	8	8	7	6	2	3.8	100
PCF 03-M5C	3	M5	5	9.5	5	16.9	8	8	7	6	2.5	4.1	100
PCF 04-M3C	4	M3	5	11.5	3	15	8	8	10	8	2	3.7	100
PCF 04-M5C	4	M5	5	11.5	5	17	8	8	10	8	2.5	3.8	100



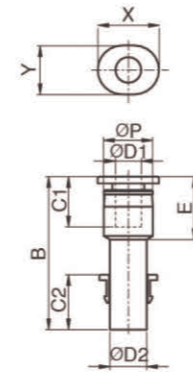
PST-C
Male Run Tee



MODEL [ØD-T] Tube (Metric) - Thread (R)

MODEL	ØD	R	ØP	C	A	B	E	H	X	Y	Orifice (Ømm)	W.G(g)	Qty/Inbox
PST 03-M3C	3	M3	6	9.5	3	11.4	11.2	6	7	6	1.2	2	100
PST 03-M5C	3	M5	6	9.5	3.5	13.5	11.2	8	7	6	2	3.3	100
PST 03-M6C	3	M6	6	9.5	4.5	14.5	11.2	8	7	6	2.4	3.6	100
PST 04-M3C	4	M3	8	11.5	3	15	13.1	8	10	8	1.2	4.2	100
PST 04-M5C	4	M5	8	11.5	3.5	14.5	13.1	8	10	8	2	4.3	100
PST 04-M6C	4	M6	8	11.5	4.5	15.5	13.1	8	10	8	2.4	4.5	100
PST04-01C	4	R1/8	8	11.5	8	16.4	13.1	10	10	8	2.8	7	100
PST 06-M5C	6	M5	10.5	12.5	3.5	16.5	14.4	8	12	10	2	5.6	100
PST 06-M6C	6	M6	10.5	12.5	4.5	17.5	14.4	8	12	10	2.4	5.9	100
PST 06-01C	6	R1/8	10.5	12.5	8	18	14.4	10	12	10	3	8.4	100

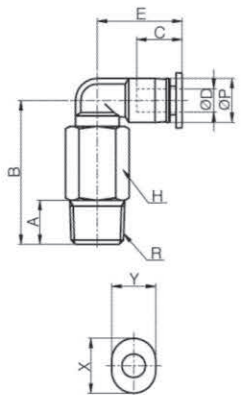
PGJ-C
Reducer



MODEL [ØD-T] Tube (Metric) - Thread (R)

MODEL	ØD1	ØD2	ØP	C1	C2	E	B	X	Y	Orifice (Ømm)	W.G(g)	Qty/Inbox
PGJ 04-03C	3	4	6.5	9.5	11.5	11.2	29.2	7	6	2.5	0.9	100
PGJ 06-04C	4	6	9	11.5	12.5	13.2	33.2	10	8	3	1.8	100

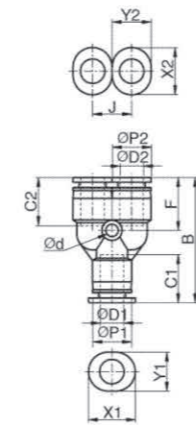
PLL-C
Extended Male Elbow



MODEL [ØD-T] Tube (Metric) - Thread (R)

MODEL	ØD	R	ØP	B	E	C	A	H	X	Y	Orifice (Ømm)	W.G(g)	Qty/Inbox
PLL 03-M3C	3	M3	6	19.4	11.2	9.5	3	6	7	6	1.2	3.1	100
PLL 03-M5C	3	M5	6	25.5	11.2	9.5	3.5	8	7	6	2	7.6	100
PLL 04-M3C	4	M3	8	23	15.6	11.5	3	8	10	8	1.2	7.4	100
PLL 04-M5C	4	M5	8	25.5	15.6	11.5	3.5	8	10	8	2	7.9	100
PLL 04-M6C	4	M6	8	26	15.6	11.5	4.5	8	10	8	2.4	8.3	100
PLL 04-01C	4	R1/8	8	28.1	15.6	11.5	8	10	10	8	2.8	13.2	100
PLL 06-M5C	6	M5	10.5	25.5	16.9	12.5	3.5	8	12	10	2	8.5	100
PLL 06-M6C	6	M6	10.5	26	16.9	12.5	4.5	8	12	10	2.4	8.9	100
PLL 06-01C	6	R1/8	10.5	29.4	16.9	12.5	8	10	12	10	3	13.7	100

PW-C
Reducer Y



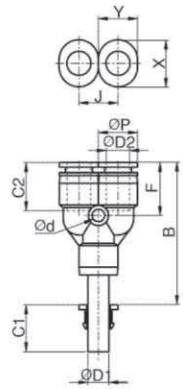
MODEL [ØD-T] Tube (Metric) - Thread (R)

MODEL	ØD1	ØD2	ØP1	ØP2	Ød	F	J	C1	C2	B	X1	Y1	X2	Y2	Orifice (Ømm)	W.G(g)	Qty/Inbox
PW 04-03C	4	3	8	8	3.2	13.4	8	11.5	9.5	30	10	8	7	6	2.5	3.6	100
PW 06-04C	6	4	10.5	8	3.2	13.6	10.5	12.5	11.5	31.5	12	10	10	8	3	4.1	100

Compact One - Touch Fittings

Compact One - Touch Fittings

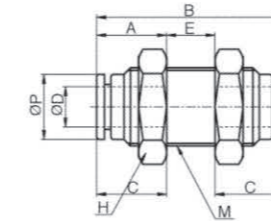
PWJ-C
Plug-In Reducer Y



MODEL[ØD-T] Tube(Metric)-Thread(R)

MODEL	ØD1	ØD2	ØP	C1	C2	Ød	F	J	B	X	Y	Orifice (Ømm)	W.G(g)	Qty/Inbox
PWJ 04-03C	4	3	8	11.5	9.5	3.2	13.4	8	33	7	6	2	3.7	100
PWJ 06-04C	6	4	10.5	12.5	11.5	3.2	13.6	10.5	38.5	10	8	3	4.2	100

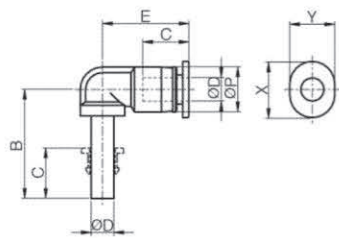
PMM-C
Bulkhead Union



MODEL[ØD-T] Tube(Metric)-Thread(R)

MODEL	ØD	M	ØP	A	E	B	H	C	Orifice (Ømm)	W.G(g)	Qty/Inbox
PMM 03C	3	M8×0.75P	6	7	7.5	20	10	9.5	2	5.2	100
PMM 04C	4	M10×1.0P	8	9	7.5	24	12	11.5	3	8.6	100
PMM 06C	6	M12×1.0P	10.5	10.5	6	25.9	14	12.5	4	13.4	100

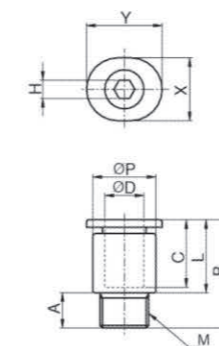
PLJ-C
Plug-In Elbow



MODEL[ØD-T] Tube(Metric)-Thread(R)

MODEL	ØD	ØP	C	B	E	X	Y	Orifice (Ømm)	W.G(g)	Qty/Inbox
PLJ 03C	3	6	9.5	21.6	11.2	7	6	1.5	1.2	100
PLJ 04C	4	8	11.5	27.6	15.6	10	8	2	2	100
PLJ 06C	6	10.5	12.5	29.6	16.9	12	10	2.4	2.6	100

PCC-C
Round Male Straight

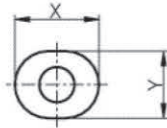
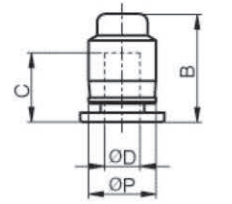


MODEL[ØD-T] Tube(Metric)-Thread(R)

MODEL	ØD	M	L	C	A	B	H	ØP	X	Y	Orifice (Ømm)	W.G(g)	Qty/Inbox
PCC 03-M6C	3	M6×0.75	11.1	9.5	3.5	14.6	2	8	7	6	2.5	2.9	100
PCC 04-M6C	4	M6×0.75	11	11.5	3.5	14.5	2.5	8	10	8	2.6	2.3	100
PCC 04-M8C	4	M8×0.75	10.5	11.5	4	14.5	3	10	10	8	3	4.6	100
PCC 06-M8C	6	M8×0.75	11.5	12.5	4	14.5	4	10	12	10	4	3.5	100

PPF-C

Cap

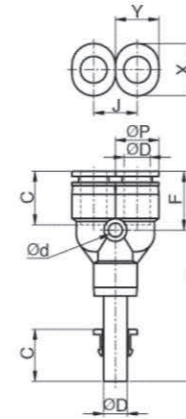


MODEL [ØD-T] Tube (Metric) - Thread (R)

MODEL	ØD	ØP	B	C	X	Y	W.G(g)	Qty/Inbox
PPF 03C	3	6	10.7	9.5	7	6	0.5	100
PPF 04C	4	8	12	11.5	10	8	1	100
PPF 06C	6	10.5	12.5	12.5	12	10	1.5	100

PYJ-C

Plug-In Y

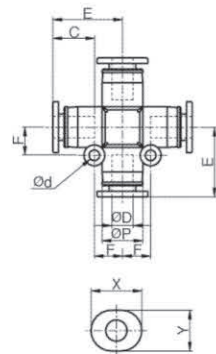


MODEL [ØD-T] Tube (Metric) - Thread (R)

MODEL	ØD	ØP	Ød	F	C	J	B	X	Y	Orifice (Ømm)	W.G(g)	Qty/Inbox
PYJ 03C	3	8	3.2	13.2	9.5	8	43.5	7	6	1.5	3	100
PYJ 04C	4	8	3.2	13.3	11.5	8	45	10	8	2	3.5	100
PYJ 06C	6	10.5	3.2	13.6	12.5	10.4	50.5	12	10	2.4	5.5	100

PZA-C

Union Cross

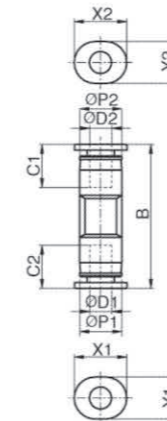


MODEL [ØD-T] Tube (Metric) - Thread (R)

MODEL	ØD	ØP	Ød	F	E	C	X	Y	Orifice (Ømm)	W.G(g)	Qty/Inbox
PZA 03C	3	6	3.2	4.5	11.5	9.5	7	6	2.5	2.2	100
PZA 04C	4	8	3.2	5.5	13.6	11.5	10	8	3	4.1	100
PZA 06C	6	10.4	3.2	6.5	15.9	12.5	12	10	4	6.6	100

PG-C

Reducer



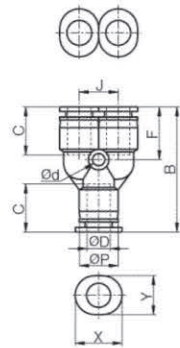
MODEL [ØD-T] Tube (Metric) - Thread (R)

MODEL	ØD1	ØD2	ØP1	ØP2	C1	C2	B	X1	Y1	X2	Y2	Orifice (Ømm)	W.G(g)	Qty/Inbox
PG 0403C	3	4	6	8	9.5	11.5	22.5	7	6	10	8	2.5	1.5	100
PG 0604C	4	6	8	10.5	11.5	12.5	24	10	8	12	10	3	2.5	100

PY-C
Union Y

MODEL[ØD-T] Tube(Metric)–Thread(R)

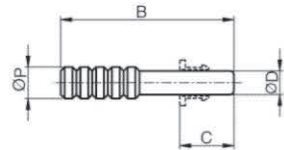
MODEL	ØD	ØP	Ød	F	C	J	B	X	Y	Orifice (Ømm)	W.G(g)	Qty/Inbox
PY 03C	3	8	3.2	13.2	9.5	8	29.9	7	6	2.5	3.6	100
PY 04C	4	8	3.2	13.3	11.5	8	30.1	10	8	3	3.4	100
PY 06C	6	10.5	3.2	13.6	12.5	10.5	32.1	12	10	4	5.3	100



PP-C
Plug

MODEL[ØD-T] Tube(Metric)–Thread(R)

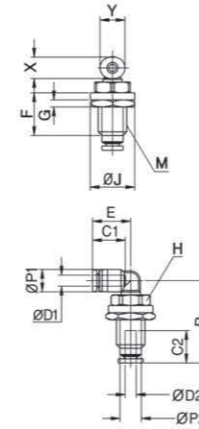
MODEL	ØD	B	C	ØP	W.G(g)	Qty/Inbox
PP 03C	3	22	9.5	4	0.3	100



PLM-C
Bulkhead Union P

MODEL[ØD-T] Tube(Metric)–Thread(R)

MODEL	ØP1	ØD1	ØP2	ØD2	E	C1	C2	B	F	G	H	ØJ	M	X	Y	Orifice (Ømm)	W.G(g)	Qty/Inbox
PLM 03C	6.3	3	6	3	10.6	9.5	9.5	22.4	11	2	10	12.5	M8×0.75P	9	7	2.5	5.2	100
PLM 04C	8	4	8	4	15.3	11.5	11.5	24.4	13	3	12	14	M8×0.76P	10	8	3	8.6	100
PLM 06C	10.4	6	10	6	16.3	12.5	12.5	31.5	16.6	4	14	17	M8×0.77P	12	10	4	13.4	100



Metric Size G(PF) Thread Type

- One -Touch Fittings
- **Compact One -Touch Fittings**
- Speed Controllers
- Metal Body Speed Controllers
- Rotary Joints
- Stop Fittings
- Check Valves
- Ball Valves
- Hand Valves

COMPACT ONE-TOUCH FITTINGS

Application

- Compact type one-touch joints used in small types of pneumatic piping.
- A wide variety of models are available to meet most your needs.

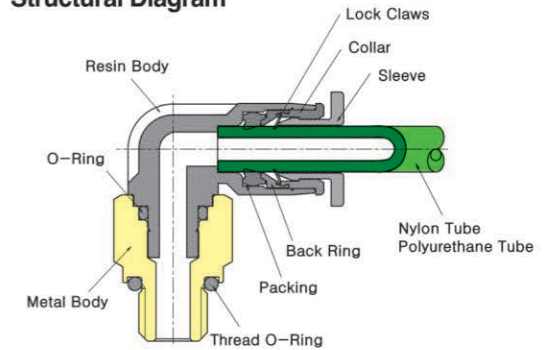
Feature

- The world's smallest quick-fitting joints feature 40% smaller volume ratio and 20% smaller O.D. ratio in comparison to the conventional type.
- The compact type joints, which are nickel plated, are excellent not only in appearance but also in rust resistance.
- The elliptical sleeve helps easy application or removal of the tube in confined space.

Specification

Fluid	Air(No other gases or liquids)	
Working Pressure Range	0~150PSI	0~9Kgf/cm ² (0~900kPa)
Negative Pressure	-29.50 in Hg	-750mmHg(10Torr)
Temperature Range	32~140° F	0~60° C
Applicable Tube Material	Polyurethane and Nylon	

Structural Diagram



Case In Use

- ▶ **POC Model/PCC Model**
The hexagonal shape on the inside of the body makes it possible to tighten the fitting by use of a hexagonal wrench. In the case of POC, PCC a hexagonal wrench must be used due to the round exterior.
- ▶ **PLL Model/PL Model**
Long brass body helps tightening with ease away from any obstacles.

Product Code System

PC O6-O1 C

① ② ③ ④

- ① Type
- ② Tube Dia(∅D)

Code	03	04	06	10	12	16
Dia	∅3	∅4	∅6	∅10	∅12	∅16

- ③ Thread Size(T)

	Metric Size			
Code	M3	M5	M6	01
Size	M5 × 0.8	M5 × 0.8	M6 × 1.0	R1/8

- ④ C=COMPACT

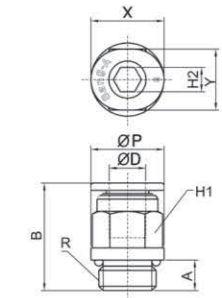
! CAUTION

- Be sure to read the "Common Precautions" and the "Using Precautions of Fitting Series" (P12) before using.
- Tube should be securely pushed into the fitting, otherwise air leakage may occur.

! WARNING

- Be sure to confirm that proper conditions are met, otherwise air leakage may occur.

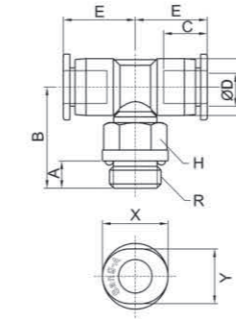
PC-C(G)
Male Straight



MODEL [ØD-T] Tube (Metric) - Thread (G)

MODEL	ØD	R	C	B	ØP	H	A	X	Y	Orifice (Ømm)	W.G(g)	Qty/Inbox
PC 04G-01C	4	G1/8	11.5	15.2	12	10	5	10	8	3	6.3	100
PC 06G-01C	6	G1/8	12.5	17.5	12	10	5	12	10	4	5.5	100

PT-C(G)
Male Branch Tee



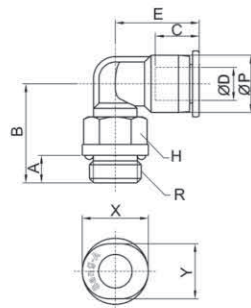
MODEL [ØD-T] Tube (Metric) - Thread (G)

MODEL	ØD	R	C	B	ØP	H	A	E	X	Y	Orifice (Ømm)	W.G(g)	Qty/Inbox
PT 04G-01C	4	G1/8	11.5	16.4	8	10	5	13.1	10	8	2.8	7	100
PT 06G-01C	6	G1/8	12.5	17.4	10.5	10	5	14.4	12	10	3	8.3	100

MODEL [ØD-T] Tube (Metric) - Thread (G)

MODEL	ØD	R	C	B	ØP	H	A	E	X	Y	Orifice (Ømm)	W.G(g)	Qty/Inbox
PL 04G-01C	4	G1/8	11.5	15.6	8	10	5	15.6	10	8	2.8	6.2	100
PL 06G-01C	6	G1/8	12.5	16.9	10.5	10	5	16.9	12	10	3	6.9	100

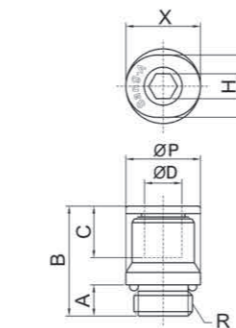
PL-C(G)
Male Elbow



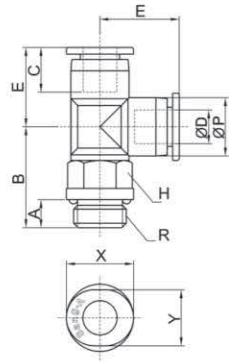
MODEL [ØD-T] Tube (Metric) - Thread (G)

MODEL	ØD	R	C	B	ØP	A	X	Y	Orifice (Ømm)	W.G(g)	Qty/Inbox
POC 04G-01C	4	G1/8	11.5	16.8	12	5	10	8	3	5.4	100
POC 06G-01C	6	G1/8	12.5	16.7	12	5	12	10	4	5.6	100

POC-C(G)
Round Male Straight



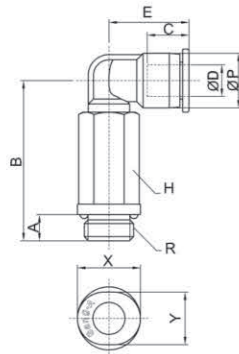
PST-C(G)
Male Run Tee



MODEL [ØD-T] Tube (Metric) – Thread (G)

MODEL	ØD	R	C	B	ØP	H	A	E	X	Y	Orifice (2mm)	W.G(g)	Qty/Inbox
PST04G-01C	4	G1/8	11.5	16.4	8	10	5	13.1	10	8	2.8	7.1	100
PST06G-01C	6	G1/8	12.5	18	10.5	10	5	14.4	12	10	3	8.5	100

PLL-C(G)
Extended Male Elbow



MODEL [ØD-T] Tube (Metric) – Thread (G)

MODEL	ØD	R	C	B	ØP	H	A	E	X	Y	Orifice (2mm)	W.G(g)	Qty/Inbox
PLL04G-01C	4	G1/8	11.5	28.1	8	10	5	15.6	10	8	2.8	13.2	100
PLL06G-01C	6	G1/8	12.5	29.4	10.5	10	5	16.9	12	10	3	13.7	100