



Level or level and temperature sensor NT 63

- flange according to DIN 24557 part 2
- continuous liquid level measurement
- continuous liquid level and temperature measurement
- 4-20 mA outputs (2-10 V on request)
- resolution 5 mm (liquid level)
- various connector options
- reliable, dynamic float system
- float and probe in stainless steel optional
- probe length up to 1420 mm, longer on request

Technical data

NT 63

Basic unit

K = continuous level and temperature measurement
KN = continuous level measurement

operating pressure max. 1 bar
 operating temperature -20 °C to +80 °C
 min. spec. density of fluid 0,80 kg/dm³ with float SK 604
 0,85 kg/dm³ with float SK 221
 lengths 280, 370, 500, 670, 820, 970
 1120, 1270 and 1420 mm
 other lengths on request)

Material / Construction	MS	VA
float	hard PU (SK 604)	1.4571 (SK 221)
flange DIN 24557 part 2	PA	PA
immersion tube	brass	1.4571

Level measurement

resolution 5 mm
 supply voltage (U_B) 10 - 30 V DC
 ripple < 1 %
 output signal 4-20 mA
 load Ω max. (U_B - 7,5 V) / 0,02 A

Temperature measurement

for Type 63 K

sensor Pt 100 class B DIN EN 60 751
 tolerance ± 0,8 °C
 supply voltage (U_B) 10 - 30 V DC
 ripple < 1 %
 output signal 4-20 mA (≈ 0-100 °C*)
 load Ω max. (U_B - 7,5 V) / 0,02 A
 * on request other ranges

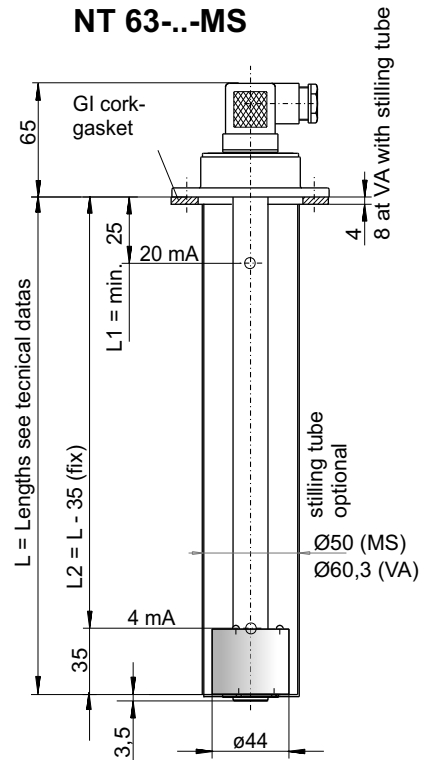
included in delivery

fixing bolts (6 pieces) and GI cork-gasket

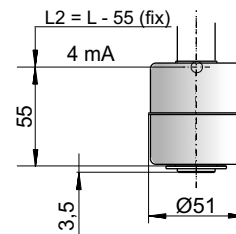
Options

stilling tube **SSR** Material like immersion tube

NT 63--MS

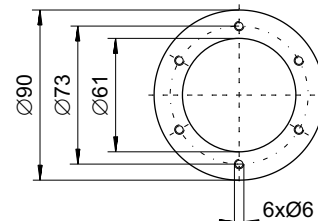


NT 63-- VA



Flange picture

according to DIN 24557/part2



Connector	M3 (DIN EN 175301-803) 3 pol. + PE IP 65 PG 11	M12 (Sockel) 4 pol. IP67**
protection class cable connection		**with casted connector head
Standard pin assignment		
K continuous level and temperature		
KN continuous level		

Product code for NT 63

NT 63- - - - -

Series

Nivotemp **NT 63**

K = Level and temperature measurement

KN = only level measurement

Design

MS brass

VA float and immersion tube VA

Connector

M3

M12

Length (max. 1420 mm)

280

370

500

670

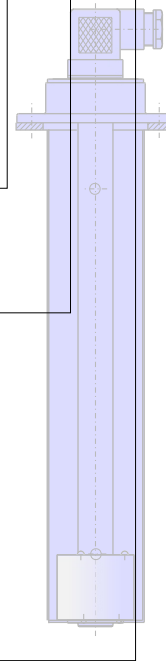
820

970

1120

1270

1420



Option

SSR = stilling tube

Accessories:

Part No.

Description

91 44 05 0010 Connecting cable M12x1, 4-pol., 1,5 m, elbow connector (female) and straight connector (male)

91 44 05 0046 Connecting cable M12x1, 4-pol., 3,0 m, elbow connector (female) and straight connector (male)

91 44 05 0047 Connecting cable M12x1, 4-pol., 5,0 m, elbow connector (female) and wire

Optionally a programmable display and control unit is available which shows and monitors the measurement, see data sheet DE 18 0201.

Example for order

You need: Level and temperature measurement with a resolution of 5mm, construction brass, with M12 connector and length L=670 mm

You order: NT 63-K-MS-M12-670