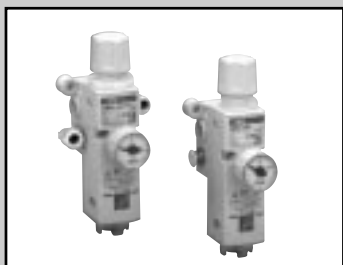
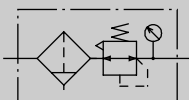


Compact filter/regulator

# WB500 Series



JIS symbol



## Features

- **Compact**  
Push-in joint and bracket are integrated to reduce total space.
- **Light weight**  
Resin is used in body material to reduce weight.
- **Increased workability**  
Push-in joint is provided as standard. 2 types of piping direction, straight or elbow are available. Plumbing is also easy.

## Specifications

Descriptions	WB500	
Working fluid	Compressed air	
Max. working pressure Mpa	1.0	
Withstanding pressure Mpa	1.5	
Ambient temperature range °C	5 to 60	
Filtration rating μm	5	
Set pressure range Mpa	0.05 to 0.7 (Note 1)	
Relief	With relief mechanism	
Drain capacity cm <sup>3</sup>	1.0	
Drainage method	Manual	
Port size	IN-OUT	Push-in joint: φ 4, φ 6
	GAUGE	Rc1/8
Product weight g	100	

Note 1: Low pressure specifications are 0.05MPa to 0.35MPa.

## How to order

**WB500 - SSC4 - PG39**

**A** Connection

**B** Option

Symbol	Descriptions	
<b>A Connection</b>		
Direction		
<b>S</b>	Straight	IN
<b>L</b>	Elbow	
<b>S</b>	Straight	OUT
<b>L</b>	Elbow	
Port size		
<b>C4</b>	φ4	
<b>C6</b>	φ6	
<b>B Option</b>		
<b>Panel mount</b> Note 3	<b>Blank</b>	Without nut
	<b>P</b>	With nut
<b>Pressure range</b>	<b>Blank</b>	0.05 to 0.7MPa (pressure gauge: G29D-6-P10)
	<b>L</b>	0.05 to 0.35MPa (pressure gauge: G39D-6-P04)
<b>Relief</b>	<b>Blank</b>	Relief type
	<b>N</b>	Nonrelief type
<b>Pressure gauge</b>	<b>Blank</b>	With pressure gauge
	<b>G39</b>	With pressure gauge (G39D-6-P10)
<b>Flow direction</b>	<b>Blank</b>	Standard flow (left → right)
	<b>X1</b>	Reverse flow (right → left)
<b>Drain plug material</b>	<b>Blank</b>	Polycarbonate
	<b>Z</b>	Opaque nylon Note 1

## Note on model no. selection

- Note 1: Opaque material (nylon) as same as the body is applied.  
 Note 2: φ 21 0 to 1.0MPa pressure gauge is provided as standard.  
 If low pressure specifications, low pressure gauge with 0 to 0.4MPa range for φ 27 is provided.  
 Note 3: Select option symbol "P" for panel installation.

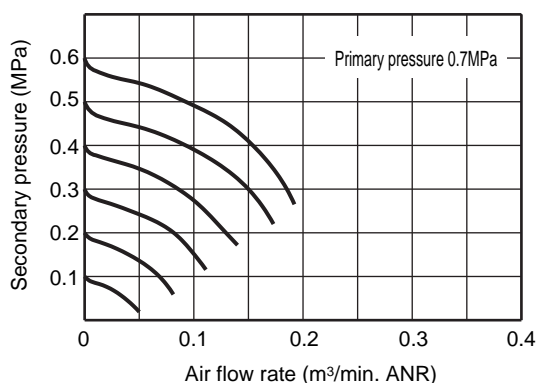
## <Example of model number>

### WB500-SSC4-PG39

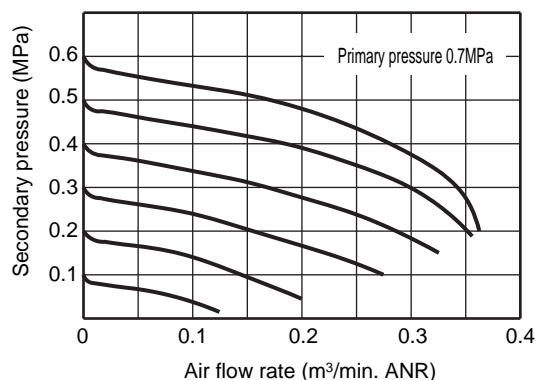
- A** Connection (direction) : Straight for IN-OUT  
Connection (port size) : φ 4
- B** Option : Panel mount
- C** Pressure gauge : φ 27 0 to 0.1MPa pressure gauge

### Flow characteristic

#### ● WB500-\*\*C4

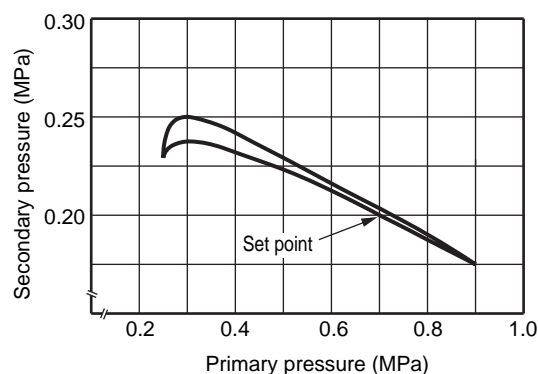


#### ● WB500-\*\*C6



### Pressure characteristic

#### ● WB500



### ⚠ Safety precautions

#### ■ Cautions on piping

- Do not use the product where organic solvent or chemicals, etc., are present in the atmosphere or adhered to the product.
- Avoid direct sun lay.
- Do not use the product where vibration or impact is applied.
- Install the product vertically facing the drain plug downward.
- Avoid using the product where large drain may be generated. If unavoidable, install an air dryer and automatic drain before IN port.
- Flush the air pipe carefully before connecting.
- Use CKD soft nylon tube or urethane tube for piping material.
- Do not insert piping inclined. It could be dislocated.
- Insert piping tube into push-in joint securely before starting use.
- If the pressure adjustment knob is rotated clockwise, the secondary pressure will increase, while rotated counterclockwise, the pressure will drop.
- Check the primary pressure before setting the pressure.
- When maintenance, stop the primary pressure, and release the residual pressure before starting work.
- When assembling a pressure gauge, tighten the gauge with tightening torque 3.5N·m or less.

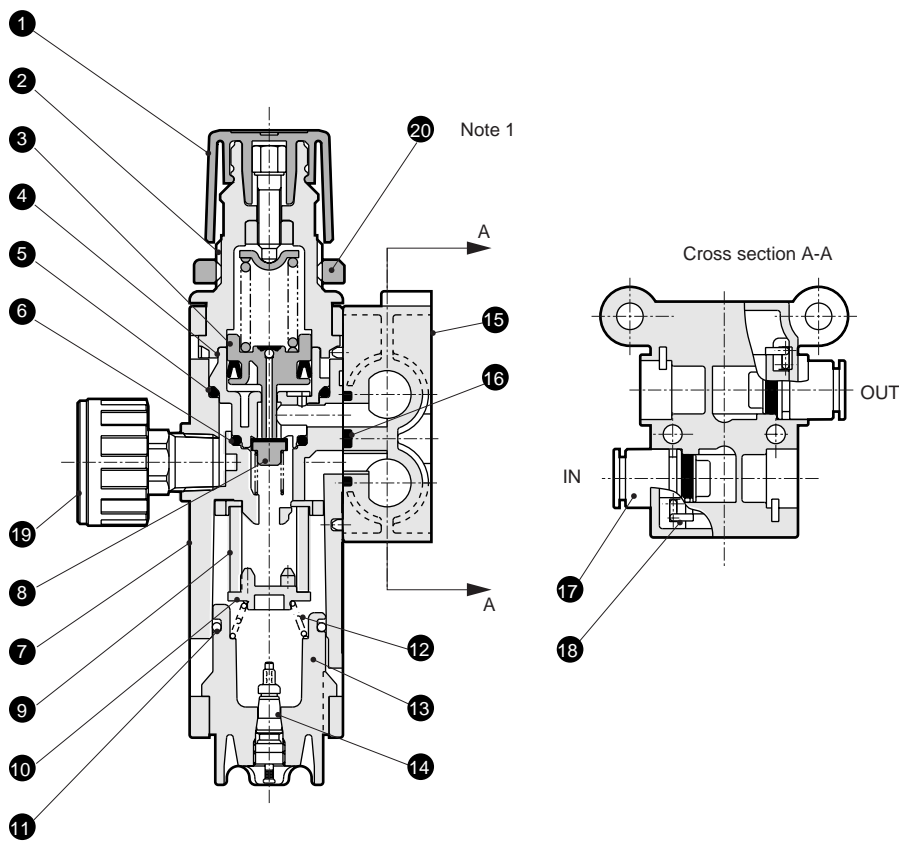
Refrigerating type dryer
Desiccant type dryer
High polymer membrane dryer
Air filter
Auto. drain / others
F.R.L. (Module unit)
F.R.L. (Separate)
Compact F.R.
Precise regulator
F.R.L. (Related products)
Clean F.R.
Electro pneumatic regulator
Air booster
Speed control valve
Silencer
Check valve / others
Joint / tube
Vacuum filter
Vacuum regulator
Suction plate
Magnetic spring buffer
Mechanical pressure SW
Electronic pressure SW
Contact / close contact cont. SW
Air sensor
Pressure SW for coolant
Small flow sensor
Small flow controller
Flow sensor for air
Flow sensor for water
Total air system
Total air system (Gamma)

Ending

Compact filter, regulator  
F.R.-L. unit

## Internal structure and parts list

Refrigerating type dryer
Desiccant type dryer
High polymer membrane dryer
Air filter
Auto. drain / others
F.R.L. (Module unit)
F.R.L. (Separate)
Compact F.R.
Precise regulator
F.R.L. (Related products)
Clean F.R.
Electro pneumatic regulator
Air booster
Speed control valve
Silencer
Check valve / others
Joint / tube
Vacuum filter
Vacuum regulator
Suction plate
Magnetic spring buffer
Mechanical pressure SW
Electronic pressure SW
Contact / close contact conf. SW
Air sensor
Pressure SW for coolant
Small flow sensor
Small flow controller
Flow sensor for air
Flow sensor for water
Total air system
Total air system (Gamma)
Ending



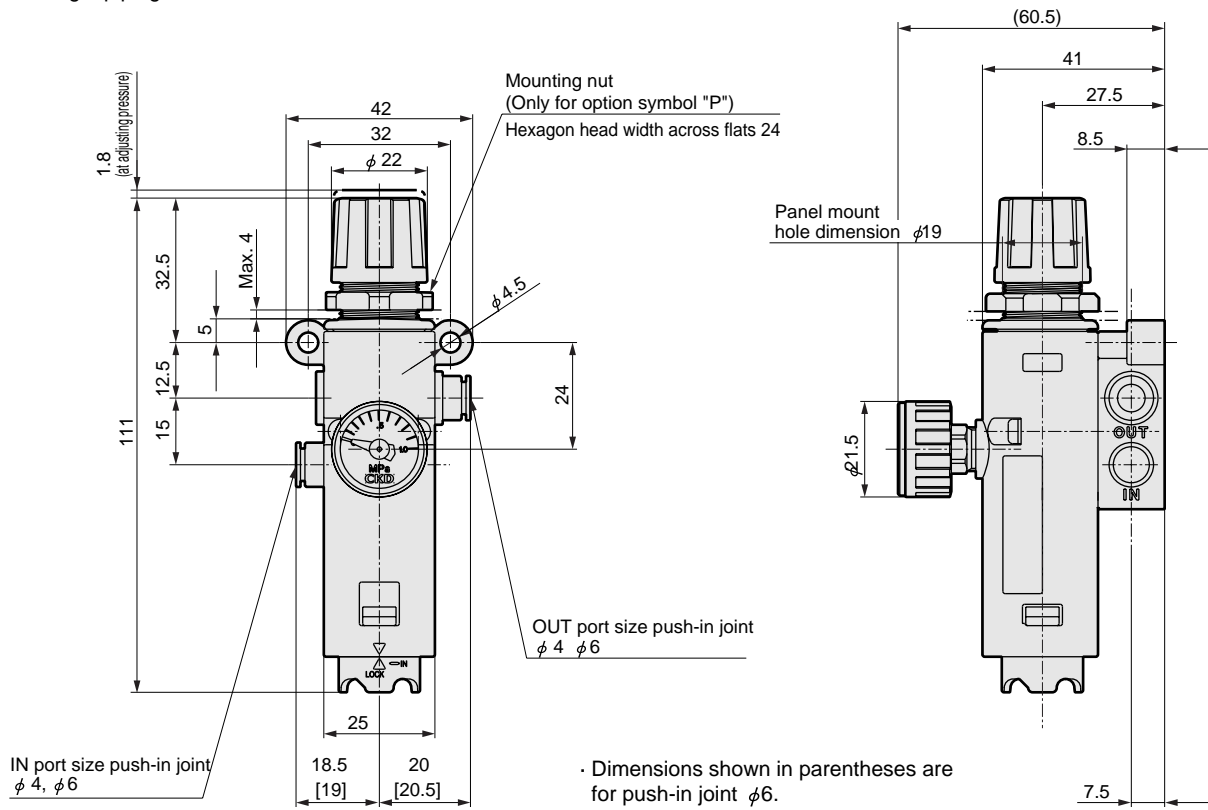
Note 1: Mounting nut is optional.  
Attached only for option symbol "P".

No.	Parts name	Material
1	Knob	Polyacetal resin
2	Guard	Polyamide resin
3	Piston assembly	Polyacetal resin, nitrile rubber
4	Piston guide	Polyacetal resin
5	O ring	Nitrile rubber
6	O ring	Nitrile rubber
7	Body	Polyamide resin
8	Valve element	Aluminum, hydrogen nitrile rubber
9	Element	Polypropylene
10	Baffle	Polyacetal resin
11	O ring	Special nitrile rubber
12	Spring	Stainless steel
13	Drain plug	Polycarbonate resin
14	Valve	
15	Piping block assembly	Polyamide resin, steel
16	Body packing seal	Hydrogen nitrile rubber
17	Cartridge joint	
18	Stop pin	Stainless steel
19	Pressure gauge	
20	Mounting nut	Polyacetal resin

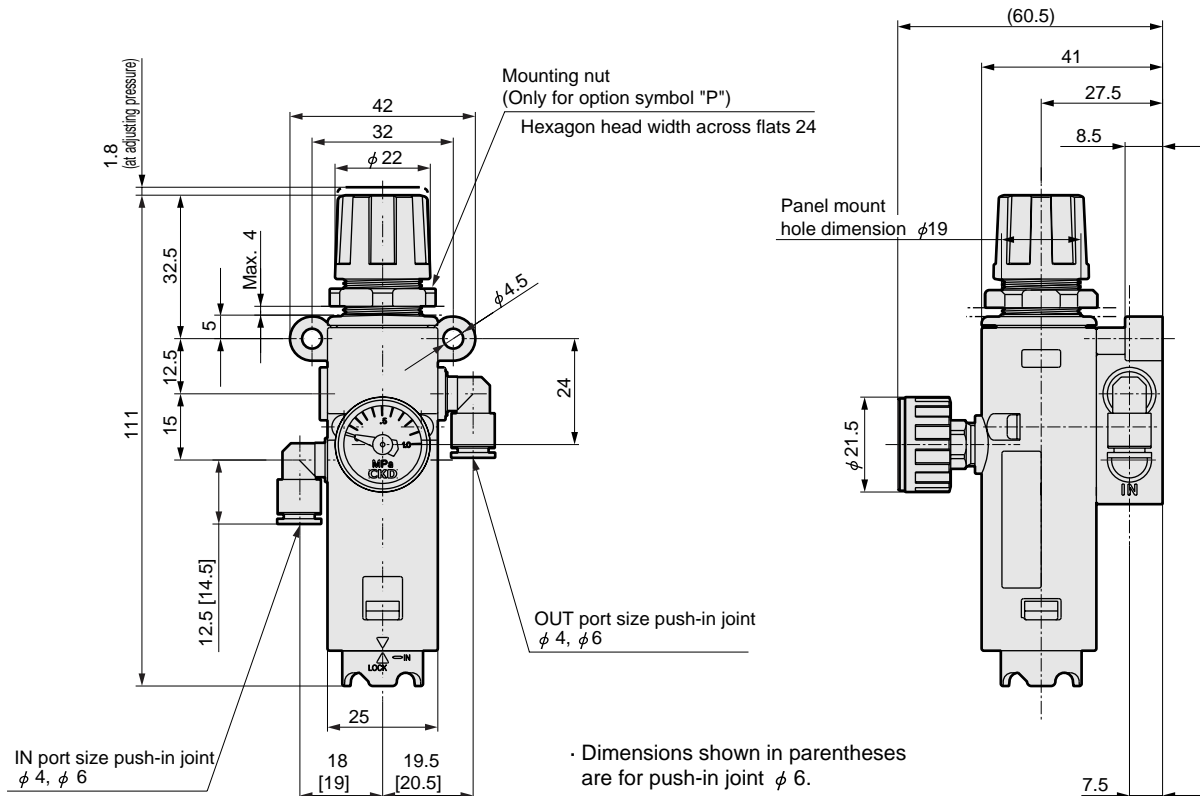
### Dimensions



#### ● WB500 straight piping



#### ● WB500 elbow piping



Refrigerating type dryer
Desiccant type dryer
High polymer membrane dryer
Air filter
Auto. drain / others
F.R.L. (Module unit)
F.R.L. (Separate)
Compact F.R.
Precise regulator
F.R.L. (Related products)
Clean F.R.
Electro pneumatic regulator
Air booster
Speed control valve
Silencer
Check valve / others
Joint / tube
Vacuum filter
Vacuum regulator
Suction plate
Magnetic spring buffer
Mechanical pressure SW
Electronic pressure SW
Contact / close contact cont. SW
Air sensor
Pressure SW for coolant
Small flow sensor
Small flow controller
Flow sensor for air
Flow sensor for water
Total air system
Total air system (Gamma)

Ending

Compact filter, regulator  
F.R.L. unit