

SILENCERS

Application

- Used for suppressing the noise of air release, applied to exhausted port of machine.

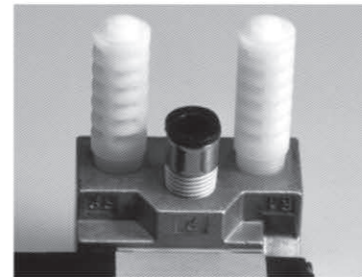
Feature

- Excellent noise suppression effect.
- Several options of materials (Brass, Stainless Steel, Plastic, Al)
- High durability and wide applications.
- Compact design is suitable for installing in confined space.



Case In Use

- Applied to exhausted port of machine.
- Sintering Silencer for anti-corrosion & high temperature place and ST Silencer for superior silence & contaminated place.



Silencers



Product Code System

SL 01

① ②

① Type

② Thread Size

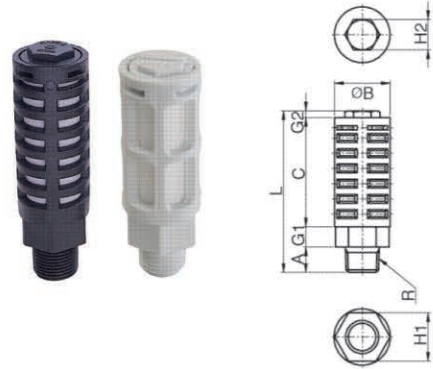
Thread Size	Metric Thread	Tape Pipe Thread									
Code	M5	01	02	03	04	06	08	10	12	16	
Size	M5	R1/8	R1/4	R3/8	R1/2	R3/4	R1	R1 1/4	R1 1/2	R2	

Thread Size	Tape Paralle Thread					
Code	G01	G02	G03	G04	G06	G08
Size	G1/8	G1/4	G3/8	G1/2	G3/4	G1

CAUTION

- Be sure to read the "Common Precautions" and "Using Precautions of Fitting Series" (P12) before using.
- Replace silencer after moderate use.
- Seal with Teflon, failure to do so will cause air leakage.
- Clean regularly to maintain good air release efficiency.
- Fastening the thread by force will cause damage on the body.

ST

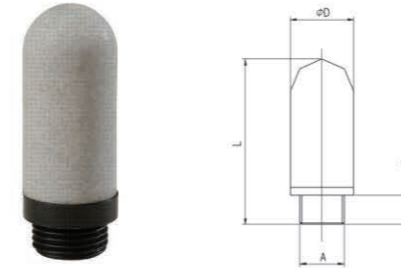


- ▶ **Application** : Used for suppressing the noise of air release, applied to exhausted port of machine.
- ▶ **Material** : PBT, PE
- ▶ **Feature** : Small size used for in low noisy applications.
Made of plastic, very light and strong.
Compact design is suitable for installing in confined space.

MODEL[ØD-T] Tube(Metric)–Thread(R) (mm)											
MODEL	R	ØB	L	C	A	H1	H2	G1	G2	W.G(g)	Qty/Inbox
ST M5	M5	7.5	18	-	5	-	-	-	-	0.5	100
ST 01	R 1/8	10.6	36.1	25.7	8	-	5.5	-	2.4	3	100
ST 02	R 1/4	22	63.7	43	10	19	12	8	2.7	10.5	25
ST 03	R 3/8	25	84.5	58	13.5	22	14	10	3.0	18.5	20
ST 04	R 1/2	30	93.5	64	15.5	27	19	10.5	3.5	29.5	12
ST G01	G 1/8	16	41	25	7	14	8	7	2	4.5	50
ST G02	G 1/4	21	64	42.5	10	18	12	10	2.5	12	25
ST G03	G 3/8	25	85	59.5	13	21.5	14.5	10	2.5	19.5	20
ST G04	G 1/2	30	94	67	14	26	19	10	3	30	12

*The color of ST M5, ST G is gray.

SMT

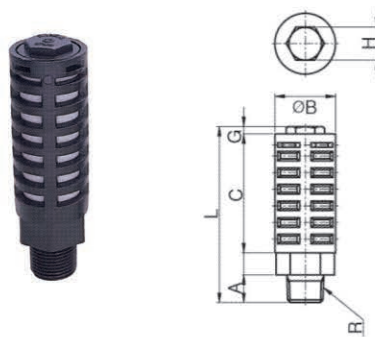


- ▶ **Application** : Used for suppressing the noise of air release, applied to exhausted port of machine.
- ▶ **Material** : PE
- ▶ **Feature** : Used for high flow and pressure applications.
Made of plastic, very light and strong.
Excellent noise suppression effect.

MODEL[ØD-T] Tube(Metric)–Thread(R) (mm)						
MODEL	A	F	ØD	L	W.G(g)	Qty/Inbox
SMT M5	M5	4	7	23	0.5	100
SMT G01	G 1/8	6.3	12.5	30	1.5	50
SMT G02	G 1/4	7.4	17	34.5	4	100
SMT G03	G 3/8	10.5	25	65	8	25
SMT G04	G 1/2	10.6	25	67	9	25
SMT G06	G 3/4	16	37	138	40.5	6
SMT G08	G 1	20	48	150	59	15

ST(M)

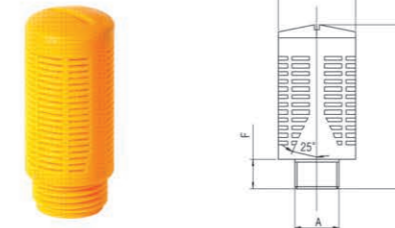
Silencers(Manifold)



- ▶ **Application** : Used for suppressing the noise of air release, applied to exhausted port of machine.
- ▶ **Material** : PBT, PE
- ▶ **Feature** : Excellent noise suppression effect
Made of plastic, very light and strong.
Compact design is suitable for installing in confined space.

MODEL[ØD-T] Tube(Metric)–Thread(R) (mm)									
MODEL	R	ØB	L	C	A	H	G	W.G(g)	Qty/Inbox
ST M02	R 1/4	15	46.5	36	8	10	2.5	4.9	50
ST M03	R 3/8	22	57.7	45	10	12	2.7	13.7	25

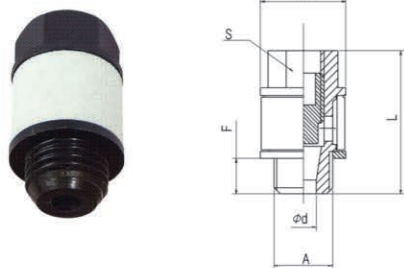
SLT



- ▶ **Application** : Used for suppressing the noise of air release, applied to exhausted port of machine.
- ▶ **Material** : PE
- ▶ **Feature** : Used for high flow and pressure applications.
Made of plastic, very light and strong.
Excellent noise suppression effect.

MODEL[ØD-T] Tube(Metric)–Thread(R) (mm)						
MODEL	A	ØD	L	F	W.G(g)	Qty/Inbox
SLT G01	G 1/8	16	32	6.5	3.5	100
SLT G02	G 1/4	20	42	8	6	50
SLT G03	G 3/8	24	56	10	12.5	25
SLT G04	G 1/2	24	56	10	14.5	25
SLT G06	G 3/4	48	114	18.5	105.5	4
SLT G08	G 1	48	114	18.5	113.5	4

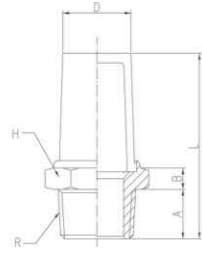
STP



- ▶ **Application** : Used for suppressing the noise of air release, applied to exhausted port of machine.
- ▶ **Material** : Nylon, PE
- ▶ **Feature** : Small size used for in low noisy applications.
Made of plastic, very light and strong.
Compact design is suitable for installing in confined space.

MODEL[ØD-T] Tube(Metric)–Thread(R) (mm)									
MODEL	A	ØD	d	F	S	L	W.G(g)	Qty/Inbox	
STP G01	G 1/8	15	3	7	13	20.5	3.5	100	
STP G02	G 1/4	18	5	8.7	15	29.2	8.5	100	
STP G03	G 3/8	24	8	10	20	38.4	19.5	50	

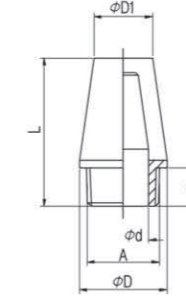
SL



- ▶ **Application** : Hydraulic & Pneumatic equipment, Water Purifier, Automobile parts, Water Ionizer, Water Heater, Tooling, etc.
- ▶ **Material** : Brass
- ▶ **Feature** : Silencer with Brass Sintering which is not burn is strong in heat and high pressure.

MODEL[ØD-T] Tube(Metric)–Thread(R) (mm)								
MODEL	R	A	B	L	D	H	W.G(g)	Qty/Inbox
SL M5	M5	4	3	20.7	4	9	3	100
SL 01	R 1/8	7	3.5	24.5	8	12	6	100
SL 02	R 1/4	9.5	4	31.5	10	15	13	50
SL 03	R 3/8	10.5	5	39.9	12	19	22	50
SL 04	R 1/2	12	6	47.3	15	22	37	25
SL 06	R 3/4	12	6.5	55.8	19	27	55	20
SL 08	R 1	14.5	7	70.5	32	36	122.5	8
SL 10	R 1 1/4	15	7.5	75.8	32	46	202.5	6
SL 12	R 1 1/2	15	8	81.8	38	52	258	4
SL 16	R 2	16.5	9	105.3	50	64	415.5	2

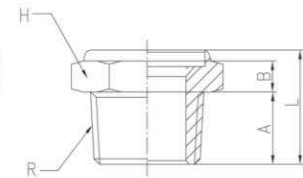
SCL



- ▶ **Application** : Hydraulic & Pneumatic equipment, Water Purifier, Automobile parts, Water Ionizer, Water Heater, Tooling, etc.
- ▶ **Material** : Steel, Brass
- ▶ **Feature** : Silencer with Brass Sintering which is not burn is strong in heat and high pressure. Silencer with steel is excellent in anti-corrosion. Superior mechanical strength.

MODEL[ØD-T] Tube(Metric)–Thread(R) (mm)								
MODEL	A	ØD	ØD1	Ød	F	L	W.G(g)	Qty/Inbox
SCL M5	M5	6.5	5.5	3	5	16	1.5	100
SCL 01	R 1/8	12	8	6.5	7	22	7	100
SCL 02	R 1/4	15	11	9	9.5	27.5	14	100
SCL 03	R 3/8	19	14	11.5	10.5	38.5	27	50
SCL 04	R 1/2	23	18	15.5	12	45	46.5	25
SCL 06	R 3/4	30	25	22	12	57	74.5	20
SCL 08	R 1	37	30	28	14.5	66.5	119	8

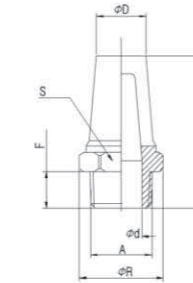
SM



- ▶ **Application** : Hydraulic & Pneumatic equipment, Water Purifier, Automobile parts, Water Ionizer, Water Heater, Tooling, etc.
- ▶ **Material** : Brass
- ▶ **Feature** : Silencer with Brass Sintering which is not burn is strong in heat and high pressure. Easy to install it in the defined space, due to compact height.

MODEL[ØD-T] Tube(Metric)–Thread(R) (mm)							
MODEL	R	A	B	L	H	W.G(g)	Qty/Inbox
SM M5	M5	4	3	8.5	8	1	100
SM 01	R 1/8	7	3.5	11.5	12	5.5	100
SM 02	R 1/4	9.5	4	15	15	10.5	100
SM 03	R 3/8	10.5	5	17	19	17	50
SM 04	R 1/2	12	6	20	22	29	25
SM 06	R 3/4	12	6.5	20.5	27	40	25
SM 08	R 1	14.5	7	24.5	36	75	15

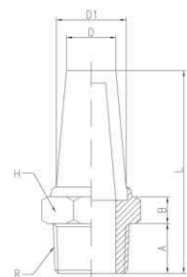
SCEL



- ▶ **Application** : Hydraulic & Pneumatic equipment, Water Purifier, Automobile parts, Water Ionizer, Water Heater, Tooling, etc.
- ▶ **Material** : Steel, Brass
- ▶ **Feature** : Silencer with Brass Sintering which is not burn is strong in heat and high pressure. Silencer with steel is excellent in anti-corrosion. Superior mechanical strength.

MODEL[ØD-T] Tube(Metric)–Thread(R) (mm)								
MODEL	A	R	ØD	Ød	F	S	L	W.G(g)
SCEL M5	M5	7.8	5	2.5	4	7	17.5	3
SCEL 01	R 1/8	13.2	8.5	7	7	12	23.5	7.5
SCEL 02	R 1/4	16.2	11	9.5	9.5	15	30.5	13
SCEL 03	R 3/8	20.5	14	12.5	10.5	19	38.5	24.5
SCEL 04	R 1/2	25.6	17	15.5	12	23	44.5	42
SCEL 06	R 3/4	33.4	21	20.5	12	30	54.5	70
SCEL 08	R 1	40	26.5	26	14.5	36	69.5	116.5

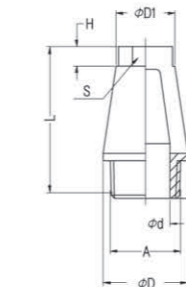
SSL



- ▶ **Application** : Hydraulic & Pneumatic equipment, Water Purifier, Automobile parts, Water Ionizer, Water Heater, Tooling, etc.
- ▶ **Material** : Stainless Steel
- ▶ **Feature** : Silencer with stainless steel is strong in heat and high pressure. It is excellent in anti-corrosion and anti-chemicals.

MODEL[ØD-T] Tube(Metric)–Thread(R) (mm)								
MODEL	R	A	B	L	D	D1	H	W.G(g)
SSL 01	R 1/8	7	4.5	29	8.2	9	12	8.5
SSL 02	R 1/4	9.5	4.5	33.5	10.5	12.5	15	14
SSL 03	R 3/8	10.5	5	40.5	12.5	15	19	25.5
SSL 04	R 1/2	12	6.5	50.5	16	18	23	43
SSL 06	R 3/4	12	7	59	22	25	30	71.5
SSL 08	R 1	15	8	71	27.5	30	36	115

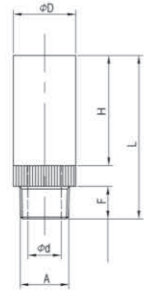
SCTL



- ▶ **Application** : Hydraulic & Pneumatic equipment, Water Purifier, Automobile parts, Water Ionizer, Water Heater, Tooling, etc.
- ▶ **Material** : Steel, Brass
- ▶ **Feature** : Silencer with Brass Sintering which is not burn is strong in heat and high pressure. Silencer with steel is excellent in anti-corrosion. Superior mechanical strength.

MODEL[ØD-T] Tube(Metric)–Thread(R) (mm)								
MODEL	A	ØD	ØD1	Ød	F	H	S	L
SCTL 01	R 1/8	12	10	6.5	7	3	8	24
SCTL 02	R 1/4	15	11.5	9	9.5	4	10	31.5
SCTL 03	R 3/8	19	15.5	11.5	10.5	5	13	39.5
SCTL 04	R 1/2	23	17.8	15.5	12	6	15	47.5
SCTL 06	R 3/4	30	25	22	12	6	19	59
SCTL 08	R 1	37	31	28	14.5	7	24	72

SCB

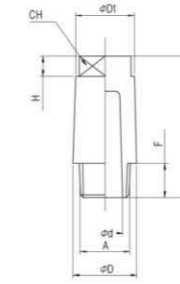


- ▶ **Application** : Hydraulic & Pneumatic equipment, Water Purifier, Automobile parts, Water Ionizer, Water Heater, Tooling, etc.
- ▶ **Material** : Steel, Red Copper
- ▶ **Feature** : It is strong in heat and high pressure. Strong thread with red cooper. It is excellent in anti-corrosion and anti-chemicals. Superior mechanical strength.

MODEL[ϕD -T] Tube(Metric)–Thread(R) (mm)

MODEL	A	ϕD	ϕd	F	H	L	W.G(g)	Qty/Inbox
SCB M5	R M5	8	3	4.5	11	18	2.5	100
SCB 6S	R $\frac{1}{8}$	11	6.5	7	14	23.5	7	100
SCB 6L	R $\frac{1}{8}$	13	7	8	25	38	18	100

STL

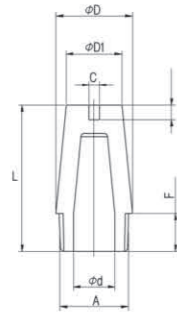


- ▶ **Application** : Hydraulic & Pneumatic equipment, Water Purifier, Automobile parts, Water Ionizer, Water Heater, Tooling, etc.
- ▶ **Material** : Brass
- ▶ **Feature** : Silencer with Brass Sintering which is not burn is strong in heat and high pressure. Superior mechanical strength.

MODEL[ϕD -T] Tube(Metric)–Thread(R) (mm)

MODEL	A	ϕD	$\phi D1$	ϕd	F	H	CH	L	W.G(g)	Qty/Inbox
STL 01	R $\frac{1}{8}$	12	8.5	5	7	4.5	7	23.5	5.5	100
STL 02	R $\frac{1}{4}$	14	11.5	6.2	9.5	4.5	9	29.5	14.5	100
STL 03	R $\frac{3}{8}$	18	15.5	9	10.5	6	13	36.5	29	50
STL 04	R $\frac{1}{2}$	24	20.5	13	12	7	17	45	64	25

SDL

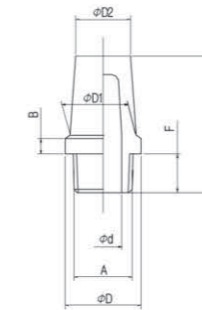


- ▶ **Application** : Hydraulic & Pneumatic equipment, Water Purifier, Automobile parts, Water Ionizer, Water Heater, Tooling, etc.
- ▶ **Material** : Brass
- ▶ **Feature** : Silencer with Brass Sintering which is not burn is strong in heat and high pressure. Excellent noise suppression effect. Superior mechanical strength.

MODEL[ϕD -T] Tube(Metric)–Thread(R) (mm)

MODEL	A	ϕD	$\phi D1$	ϕd	F	C	T	L	W.G(g)	Qty/Inbox
SDL 01	R $\frac{1}{8}$	11	8	6	7	1.5	2	22.5	5	100
SDL 02	R $\frac{1}{4}$	14	10	8.5	9.5	1.5	2	28	10.5	100
SDL 03	R $\frac{3}{8}$	18	15	11	11	2	2	36	24.5	50
SDL 04	R $\frac{1}{2}$	24	19	15	12	2	3	45	49	25
SDL 06	R $\frac{3}{4}$	29.5	20	20	12	2.5	3	65	81.5	20
SDL 08	R 1	35.5	26.5	25	15	4	4	75	125.5	8

SBL

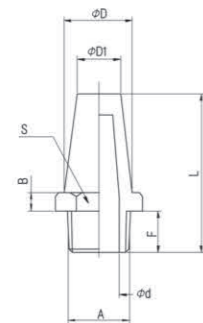


- ▶ **Application** : Hydraulic & Pneumatic equipment, Water Purifier, Automobile parts, Water Ionizer, Water Heater, Tooling, etc.
- ▶ **Material** : Brass
- ▶ **Feature** : Silencer with Brass Sintering which is not burn is strong in heat and high pressure. Superior mechanical strength.

MODEL[ϕD -T] Tube(Metric)–Thread(R) (mm)

MODEL	A	ϕD	$\phi D1$	$\phi D2$	ϕd	F	H	L	W.G(g)	Qty/Inbox
SBL 01	R $\frac{1}{8}$	12.5	10.8	9	6	7	2.5	23	5.5	100
SBL 02	R $\frac{1}{4}$	16	13.2	11	7.5	9.5	3	29.5	14.5	100
SBL 03	R $\frac{3}{8}$	20	16.5	14.5	10	10.5	3.5	37.5	29	50
SBL 04	R $\frac{1}{2}$	26	20.5	18	12	12	4	45	64	25

SEL

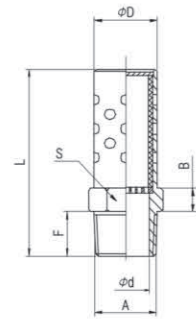


- ▶ **Application** : Hydraulic & Pneumatic equipment, Water Purifier, Automobile parts, Water Ionizer, Water Heater, Tooling, etc.
- ▶ **Material** : Brass
- ▶ **Feature** : Silencer with Brass Sintering which is not burn is strong in heat and high pressure. Superior mechanical strength.

MODEL[ϕD -T] Tube(Metric)–Thread(R) (mm)

MODEL	A	ϕD	$\phi D1$	ϕd	F	B	S	L	W.G(g)	Qty/Inbox
SEL 01	R $\frac{1}{8}$	10	8	4	7	4	13	29	10	100
SEL 02	R $\frac{1}{4}$	14	12	6	9.5	4	17	35.5	20	100
SEL 03	R $\frac{3}{8}$	16.5	15	9	10.5	5	22	36.5	24.5	50
SEL 04	R $\frac{1}{2}$	20.5	19	12	12	7	27	44	58	25
SEL 06	R $\frac{3}{4}$	24	22	16	14	10	32	65	74	20
SEL 08	R 1	31	28	22	16	10	41	75	115.5	8

SB

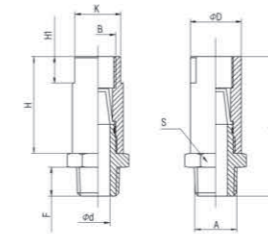


- ▶ **Application** : Hydraulic & Pneumatic equipment, Automobile parts, Tooling, etc.
- ▶ **Material** : Steel
- ▶ **Feature** : Used for high exhaust flow and unifying force applications. Excellent noise suppression effect.

MODEL[ØD-T] Tube(Metric)-Thread(R) (mm)

MODEL	A	F	ØD	Ød	L	B	S	W.G(g)	Qty/Inbox
SB 01	R 1/8	7	10.4	6	35	3.5	11.1	8	50
SB 02	R 1/4	11	13.4	8.5	45	4	14.29	15.5	50
SB 03	R 3/8	12.8	16.5	12	53	4.5	17.4	24.5	25
SB 04	R 1/2	15.817	21.5	15	70	5	22.2	50.5	25
SB 06	R 3/4	.7	26.5	20	80	6	27	71.5	12
SB 08	R1	22.5	32.3	26	98	7	33.3	126.5	12
SB 10	R 1/4	23	42.3	32	114	7.5	43	253.5	2
SB 12	R 1/2	25.5	50.3	40	127	8.5	51	321	2
SB 16	R2	26	59.3	50	140	9	60	450.5	1

SAM

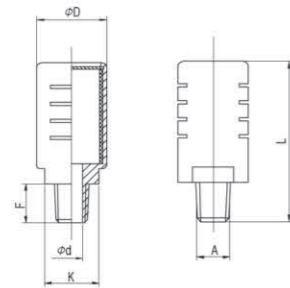


- ▶ **Application** : Hydraulic & Pneumatic equipment, Automobile parts, Tooling, etc.
- ▶ **Material** : AL, Brass
- ▶ **Feature** : Designed for exhausting water or remnants. AL material strong in corrosion and poor environment.

MODEL[ØD-T] Tube(Metric)-Thread(R) (mm)

MODEL	A	B	ØD	K	Ød	F	H	H1	S	L	W.G(g)	Qty/Inbox
SAM 01	R 1/8	R 1/8	16	14	5.5	7	34	7	16	49	18.5	50
SAM 02	R 1/4	R 1/4	18.5	17	8	9.5	39	10	19	55.5	28.5	25
SAM 03	R 3/8	R 3/8	22	20	10	12.5	44	10	22	61.5	41	25
SAM 04	R 1/2	R 1/2	28	26	14.5	16.5	55	10	28.7	77	78	10
SAM 06	R 3/4	R 3/4	37.5	35	21	19	62	17.5	38	88	153	6

SLM

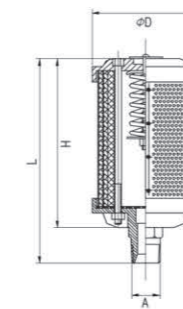


- ▶ **Application** : Hydraulic & Pneumatic equipment, Automobile parts, Tooling, etc.
- ▶ **Material** : AL
- ▶ **Feature** : Used for high exhaust flow and unifying force applications. AL material strong in corrosion and poor environment. Excellent noise suppression effect. Used for large equipment with high exhaust flow.

MODEL[ØD-T] Tube(Metric)-Thread(R) (mm)

MODEL	A	F	ØD	Ød	K	L	W.G(g)	Qty/Inbox
SLM 01	R 1/8	7	10.4	6	16	35	16	50
SLM 02	R 1/4	11	13.4	8.5	16	45	16.5	50
SLM 03	R 3/8	12.8	16.5	12	25	53	49	12
SLM 04	R 1/2	15.8	21.5	15	25	70	49.5	12
SLM 06	R 3/4	17.7	26.5	20	41	80	78	6
SLM 08	R1	22.5	32.3	26	41	98	155.5	2
SLM G01	G 1/8	7	10.4	6	16	35	14	50
SLM G02	G 1/4	11	13.4	8.5	16	45	26.5	12
SLM G03	G 3/8	12.8	16.5	12	25	53	50	12
SLM G04	G 1/2	15.8	21.5	15	25	70	73.5	12
SLM G06	G 3/4	17.7	26.5	20	41	80	129.5	6
SLM G08	G1	22.5	32.3	26	41	98	155	2

SAL

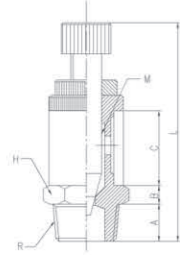


- ▶ **Application** : Hydraulic & Pneumatic equipment, Automobile parts, Tooling, etc.
- ▶ **Material** : AL
- ▶ **Feature** : Used for large equipment with high exhaust flow and noise. AL material strong in corrosion and poor environment. High silence effect with high density and exhaust flow.

MODEL[ØD-T] Tube(Metric)-Thread(R) (mm)

MODEL	A	ØD	H	L	W.G(g)	Qty/Inbox
SAL 04	R 1/2	80	125	159	331	1
SAL 06	R 3/4	87	156	180	513	3
SAL 08	R1	99	183	218	710	3
SAL 10	R1 1/4	99	183	218	731	3
SAL 12	R1 1/2	133	297	340	1922.5	1
SAL 16	R2	133	432	470	2502	1

SBC

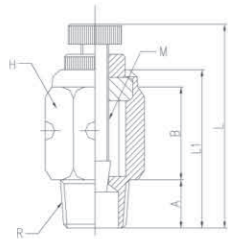


- ▶ **Application** : Hydraulic & Pneumatic equipment, Automobile parts, Tooling, etc.
- ▶ **Material** : Brass
- ▶ **Feature** : Silencer with Brass Sintering has the flow controller which controls the speed of cylinder.

MODEL [ØD-T] Tube(Metric)–Thread(R) (mm)

MODEL	R	A	B	C	L	H	M	W.G(g)	Qty/Inbox
SBC 01	R 1/8	7	3	10	34	12	M4×0.5	17.5	50
SBC 02	R 1/4	9.5	4	10.5	37	14	M5×0.5	27.5	25
SBC 03	R 3/8	10.5	4	15	48	17	M7×0.75	47	25
SBC 04	R 1/2	12	5	22	58.5	24	M9×0.75	84	12
SBC 06	R 3/4	12	7	24	66	27	M10×1	140	12
SBC 08	R 1	14.5	8	34	80.5	34	M10×1	224.5	9

SCC

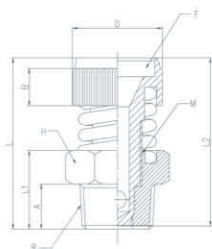


- ▶ **Application** : Hydraulic & Pneumatic equipment, Automobile parts, Tooling, etc.
- ▶ **Material** : Brass
- ▶ **Feature** : Silencer with Brass Sintering has the flow controller which controls the speed of cylinder. The brass cover around filter provides strong body.

MODEL [ØD-T] Tube(Metric)–Thread(R) (mm)

MODEL	R	A	B	L1	L	H	M	W.G(g)	Qty/Inbox
SCC 01	R 1/8	7	13.5	22.9	34.2	13	M4×0.5	16	50
SCC 02	R 1/4	9.5	15.5	27.5	38.5	14	M5×0.5	28	25
SCC 03	R 3/8	10.5	17.5	30.5	44	17	M7×0.75	44.5	25
SCC 04	R 1/2	12	20	34	48.5	22	M9×0.75	77.5	20
SCC 06	R 3/4	14.5	24	41.5	60	27	M10×1	125.5	20
SCC 08	R 1	16	31	50	70	34	M10×1	218	9

SDC



- ▶ **Application** : Hydraulic & Pneumatic equipment, Automobile parts, Tooling, etc.
- ▶ **Material** : Brass
- ▶ **Feature** : Silencer with Brass Sintering has the flow controller which controls the speed of cylinder. Easy to install it in the defined space, due to compact height.

MODEL [ØD-T] Tube(Metric)–Thread(R) (mm)

MODEL	R	A	B	D	L1	L2	H	L	M	F	W.G(g)	Qty/Inbox
SDC 01	R 1/8	7	5	12	11.5	21.8	12	24	M6×0.75	10×2	16	50
SDC 02	R 1/4	9.5	6.5	14	15	25.8	15	29.5	M8×0.5	12×2	28	25
SDC 03	R 3/8	10.5	8.5	17	16.5	31	19	33.5	M10×1	14×2	44.5	25
SDC 04	R 1/2	12	8.5	18	20	33.5	22	37	M12×1	16×2	77.5	20
SDC 06	R 3/4	12	11	23	21	46	27	48	M14×1	20×3	125.5	20
SDC 08	R 1	15	15.5	28	25	55.5	34	57	M16×1.5	25×3	218	9