

# easyE-25

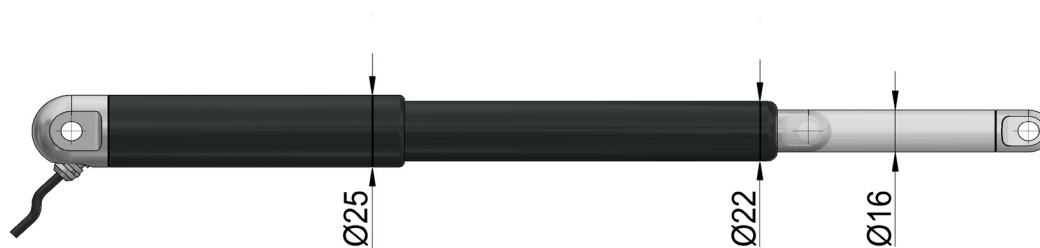
Further information  
[www.bansbach.de](http://www.bansbach.de)

**Bansbach**  
easylift

## Speed and Force:

Gear ratio	C	D	E
easyE-25			12/24VDC power supply
Force (dyn. push and pull) [N]	110	310	370
Speed at max. load [mm/s]	5	2	1,5

Current at maximum load: **12VDC** (max. 14VDC) = 0,7A, **24VDC** (max. 28VDC) = 0,4A



Axial backlash: +/- 0.5mm, General dimensional variation: +/- 1mm

Gear ratio C, D, E

Stroke + 170

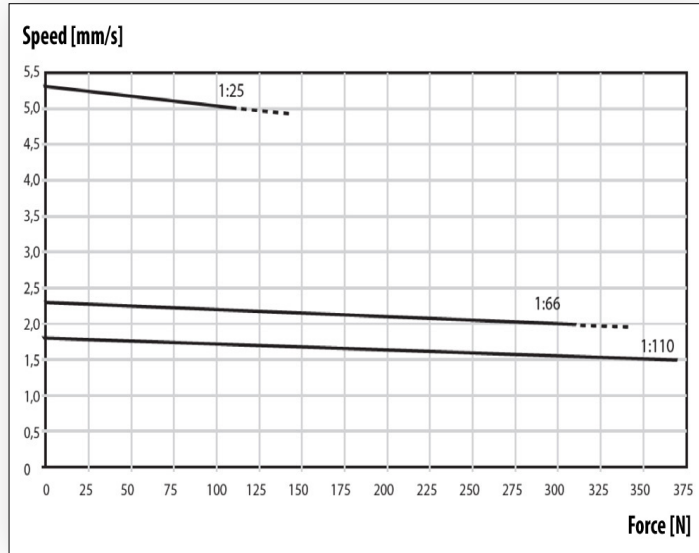
## Features:

- Stroke: 50, 100, 150, 200, 250mm
- Cable: 1m, 2X0.50mm<sup>2</sup> (AWG20), Ø=4.8mm, black, Molex Mini-Fit Jr. 6 pin
- Bending radius: 6x cable diameter
- Material: Motor and actuator tube are powder coated aluminium  
Piston rod is aluminium  
Front and rear brackets are PA
- Protection class: IP66 (Standard)
- Max. static load / self locking force: PA Brackets: 1000N  
Depending on stroke length for push-applications  
Max. Load to 250N for stroke > 250mm
- Temperature: -20°C to +70°C  
Storage: -40°C to +70°C
- Duty cycle: Max. 10% or 2 minutes in use followed by 18 minutes rest

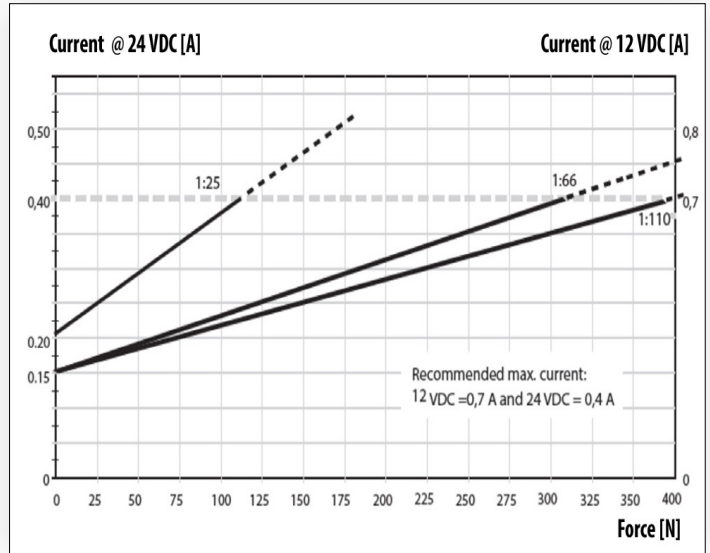
## Weight of the actuators:

Stroke [mm]	50	100	150	200	250
Weight [kg]	0,3	0,35	0,4	0,45	0,5

## Speed / Force



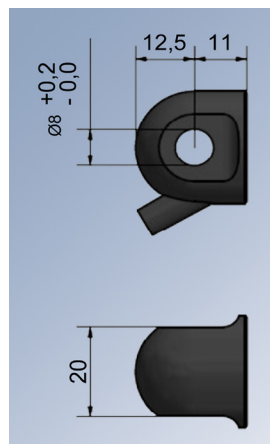
## Current / Force



## Connecting Parts:

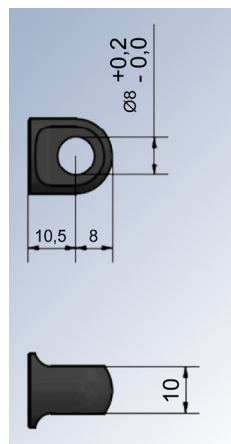
### Hinge eye „Motor-Side“

Code: B0M  
Material: Polyamid (PA)  
Maximum static load: 1000N



### Hinge eye „Piston-rod-Side“

Code: B0K  
Material: Polyamid (PA)  
Maximum static load: 1000N



The flyer is subject to technical alterations and printing.

**Bansbach easylift GmbH**

Barbarossastraße 8  
D-73547 Lorch

Tel. +49 (0) 7172/9107-0  
Fax +49 (0) 7172/9107-44

info@bansbach.de  
www.bansbach.de

**Bansbach**  
**easylift**

09/2023