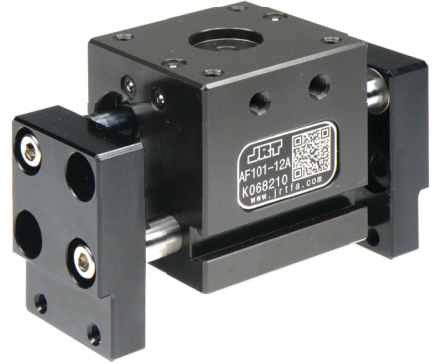


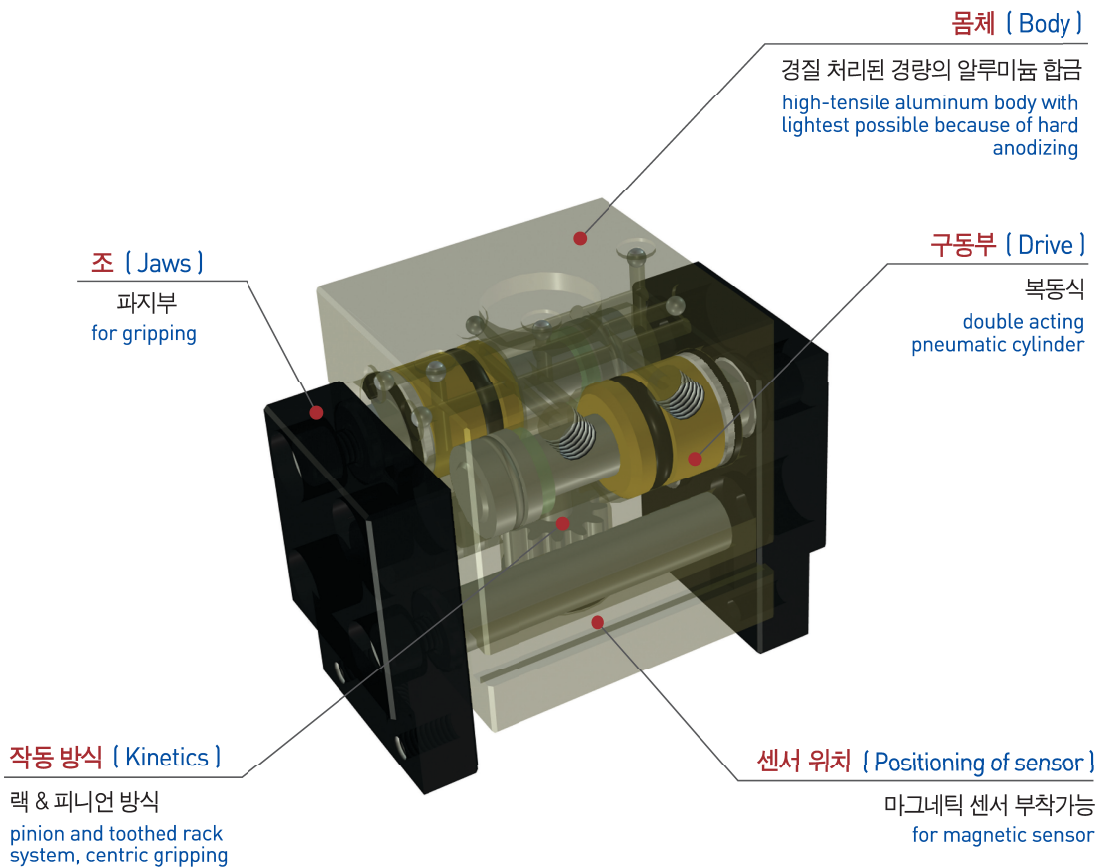


특징 (Character)

- 랙 & 피니언에 의한 평행 개폐 방식
Parallel Open-Close type of Rack & pinion
- 두 개의 실린더 내장형으로 강력한 파지력
High gripping forces by the structure of synchronized dual piston
- 개폐검출 확인용 센서 부착가능
Magnetic sensor is attachable for open-close sensing

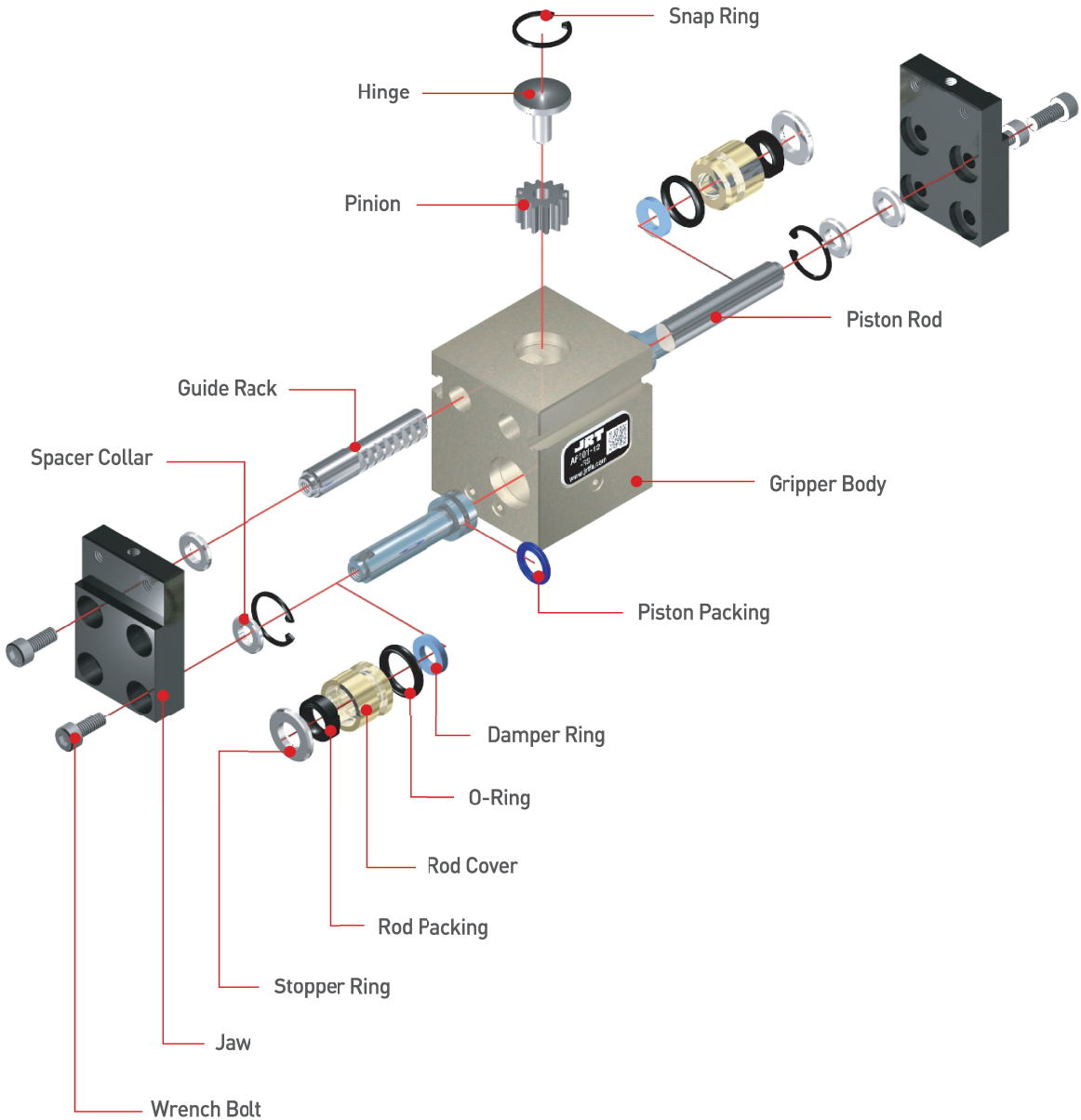


랙 & 피니언 방식 (Rack & Pinion type)



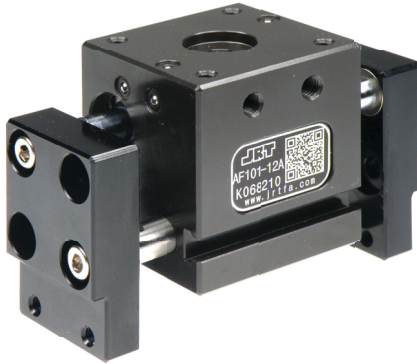
부품분해도 (Exploded view)

※ 본 분해도는 한 제품을 예시하였으므로 기종별로 차이가 있을 수 있습니다.
 ※ This exploded view illustrates a certain product only. The contents may vary by product models.



AF101
AF02
AF04P
AF105P
AF10
AF13
AF14
AF15
AF316
AF316L
AF416
AF17
AF117
AF24
AF26
AF28D
AF28DS
AF30
AF30L
AF46
AF56L
RAF56N
MF16
JPGB
JEGG
JEGB
JEGC
JEGD
JVGE

주문기호 [How to Order]



☐ 제품사양 (Specification)

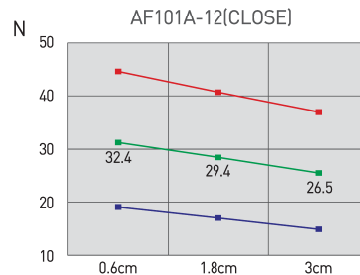
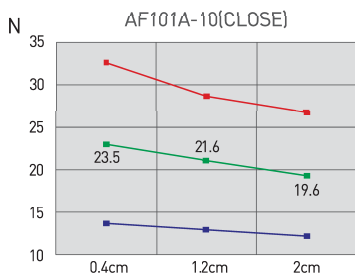
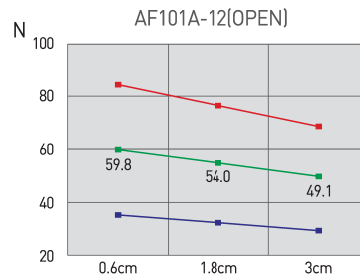
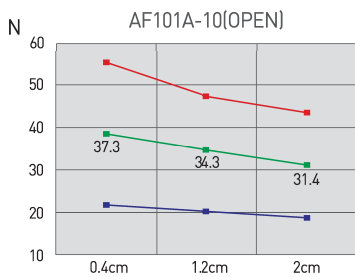
P=공기압력(bar), L=작용점까지의 거리(mm)
P = Air Pressure(bar), L = Gripping point distance(mm)

제품명칭 Products Name	AF101A-10	AF101A-12	단위 Unit
개폐범위 Stroke	10	20	mm
제품중량 Weight	0.14	0.29	kg
최대치구길이 Max. length attach	20	30	mm
배관접속구 Fitting size	M5	M5	
파지력 : 열림시 Gripping force : Open	7.85P/(1+0.013L)	12.75P/(1+0.01L)	N
파지력 : 닫힘시 Gripping force : Close	4.91P/(1+0.013L)	6.86P/(1+0.01L)	N
1사이클당 공기소모량 Air consumption per cycle	0.8	3.5	cm ³
닫힘시/열림시 시간 Closing / Opening time	0.01/0.01		sec
반복정밀도 Repeat accuracy	0.1		mm
연속사용회수 Continuation usage amount	60		cpm
사용압력 Operating pressure	3~7		bar
주위온도 Ambient temperature	-5 to 60		℃
윤활 Lubrication	불필요 Needless		

반복정밀도 : 연속 100회 작동후 측정치
After 100 consecutive strokes to end positions

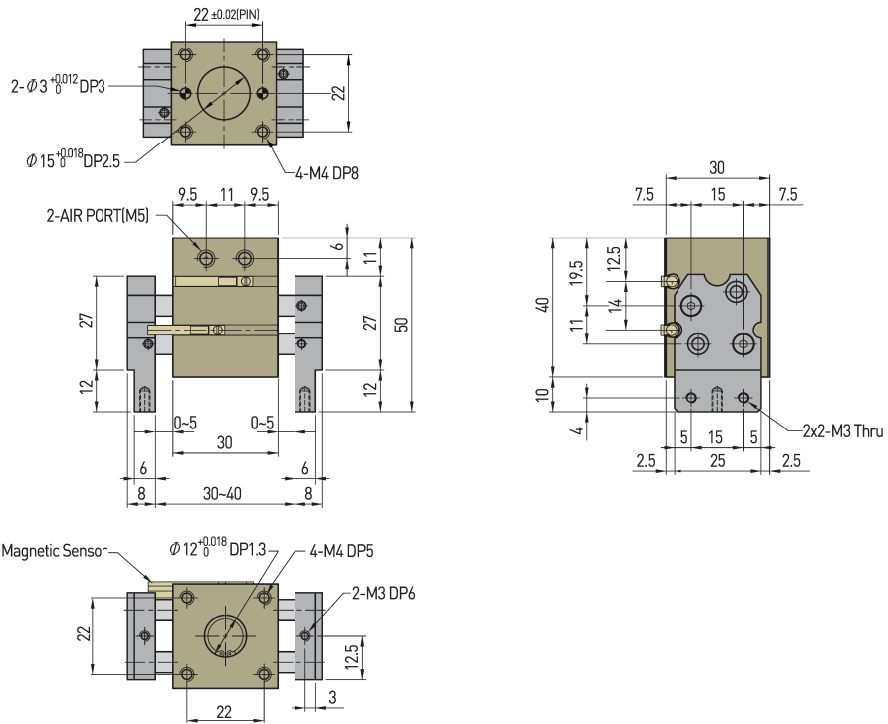
☐ 작용점에서의 파지력 (Gripping Force From a Point of Action)

범례 (Legend) : —■— 7[bar] —■— 5[bar] —■— 3[bar]

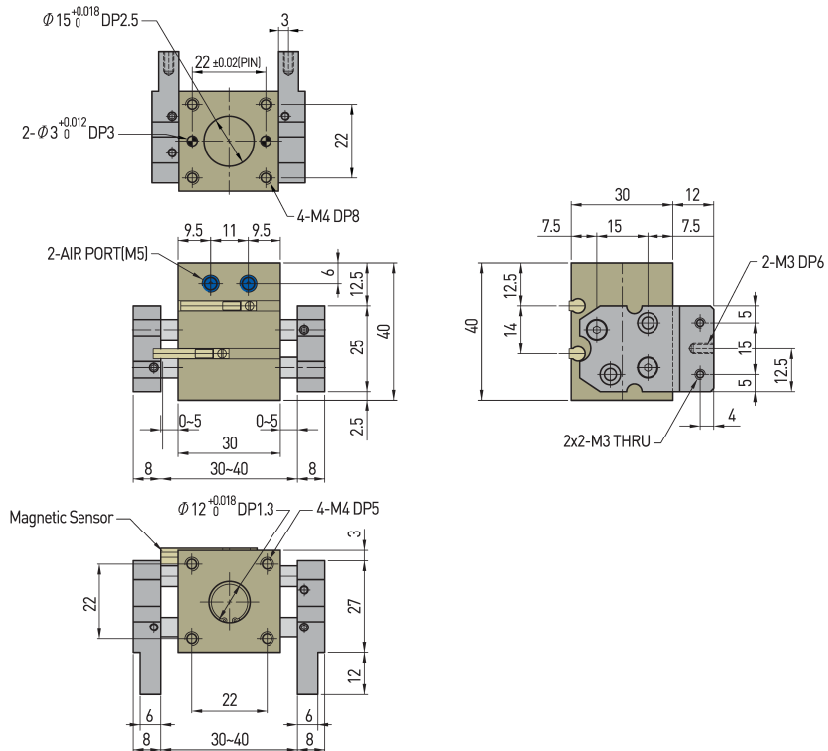


- AF101
- AF02
- AF04P
- AF105P
- AF10
- AF13
- AF14
- AF15
- AF316
- AF316L
- AF416
- AF17
- AF117
- AF24
- AF26
- AF28D
- AF28DS
- AF30
- AF30L
- AF46
- AF56L
- RAF56N
- MF16
- JPGB
- JEGG
- JEGB
- JEGC
- JEGD
- JVGE

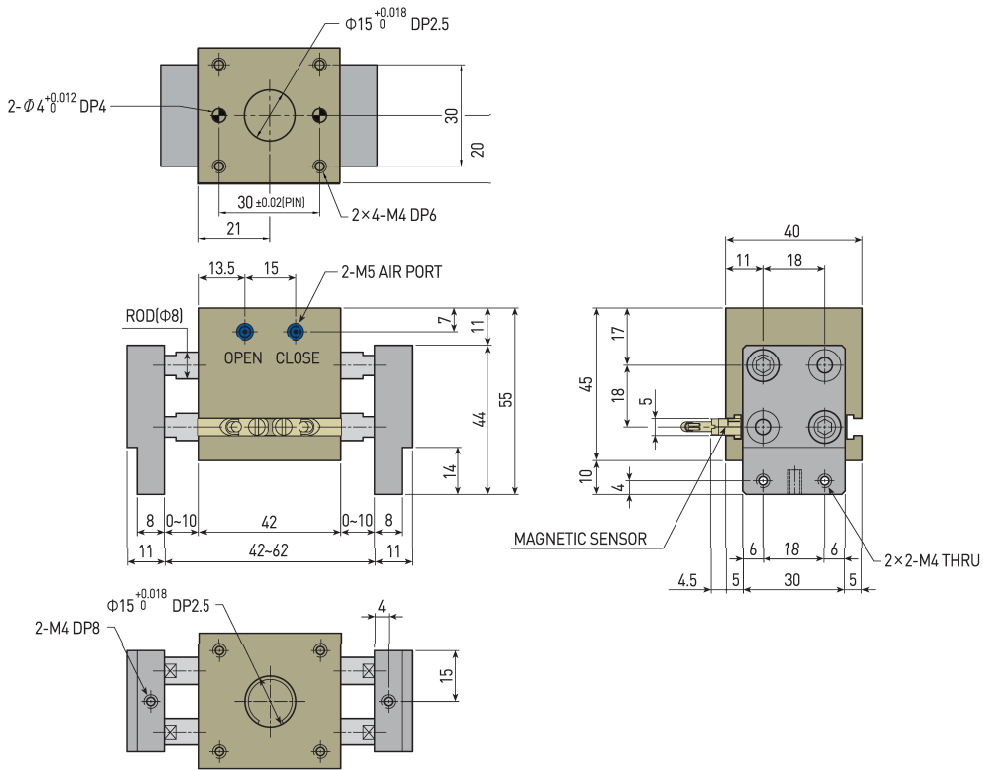
AF101A-10-A



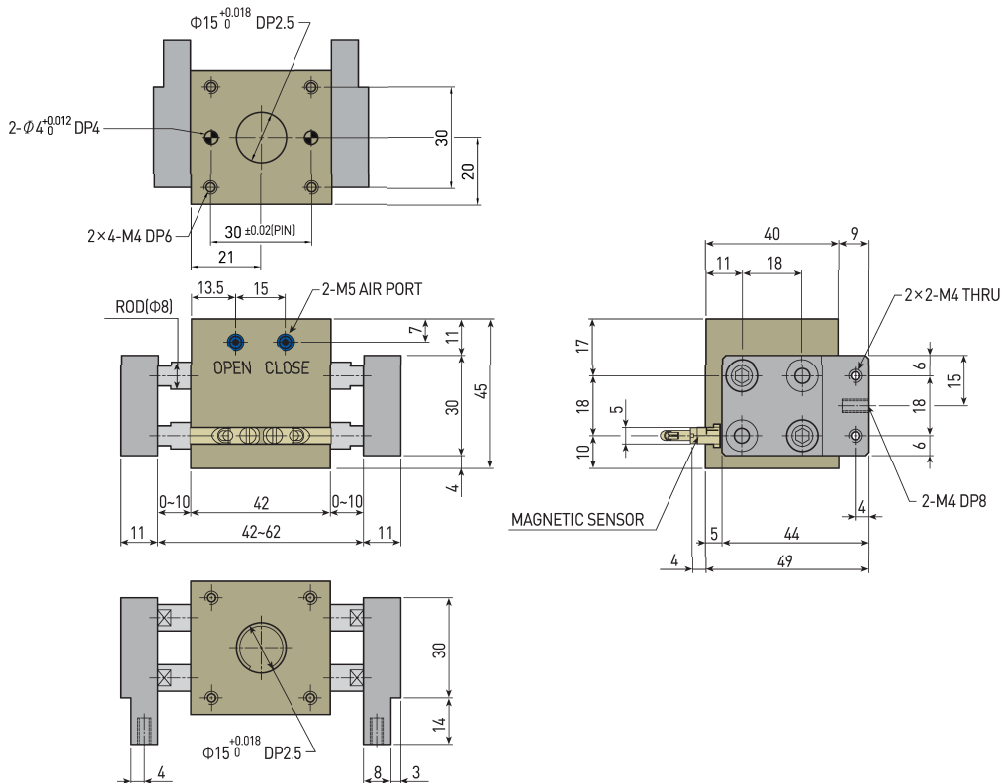
AF101A-10-B



AF101A-12-A



AF101A-12-B



AF101

AF02

AF04P

AF105P

AF10

AF13

AF14

AF15

AF316

AF316L

AF416

AF17

AF117

AF24

AF26

AF28D

AF28DS

AF30

AF30L

AF46

AF56L

RAF56N

MF16

JPGB

JEGG

JEGB

JEGC

JEGD

JVGE